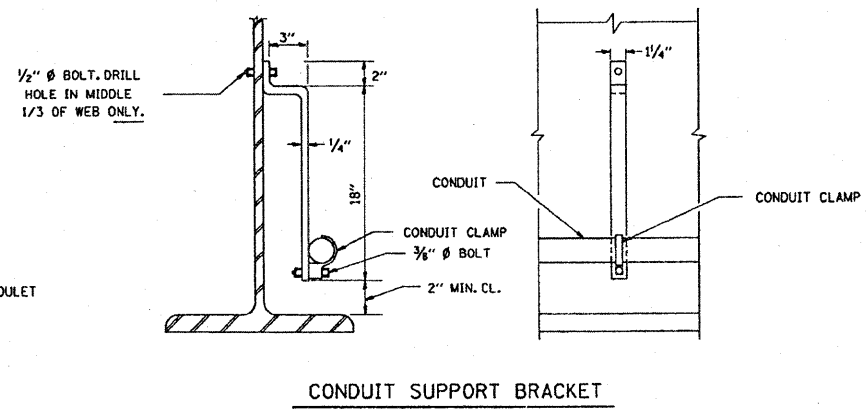
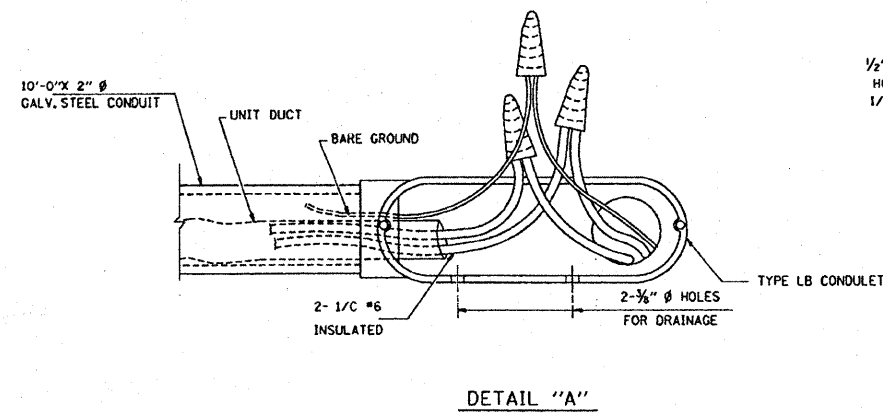
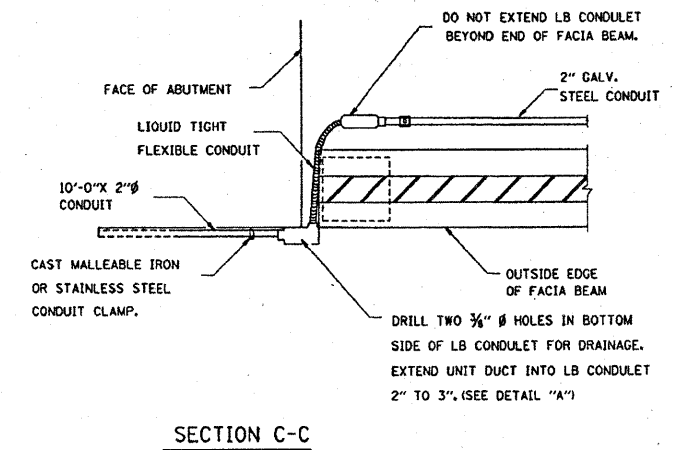
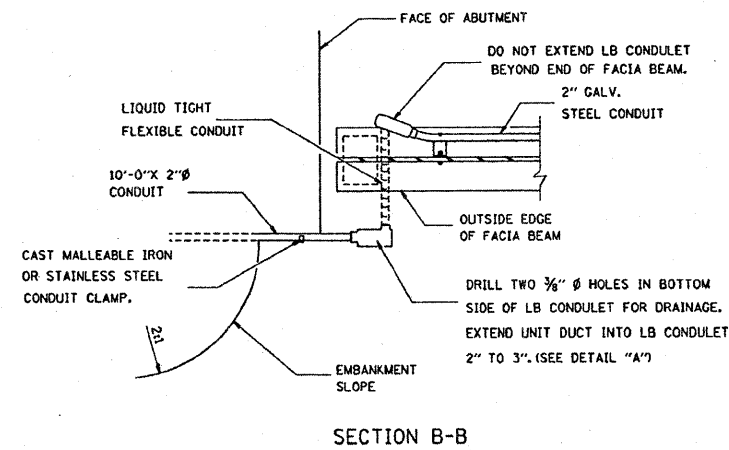
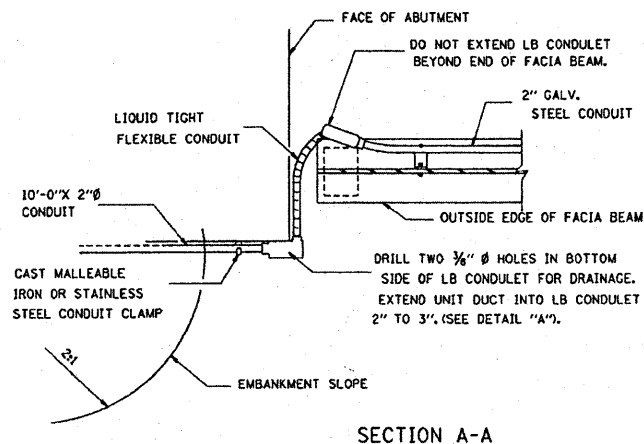
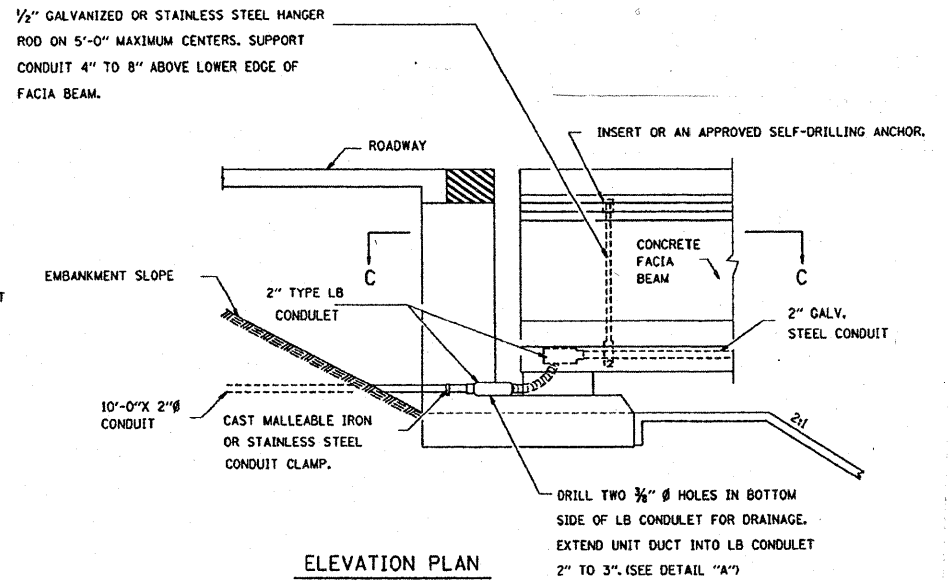
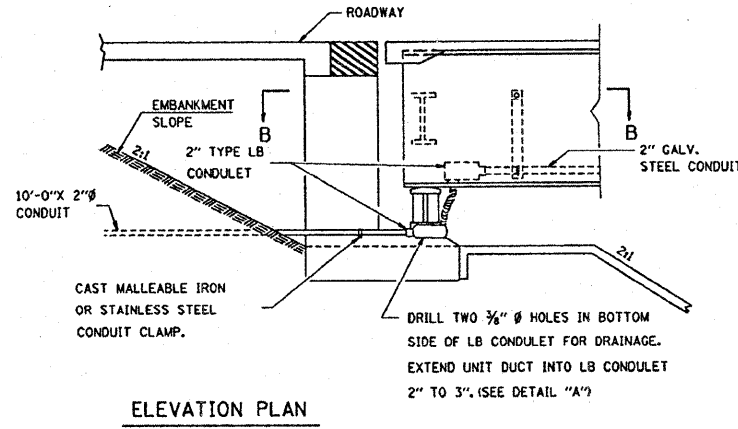
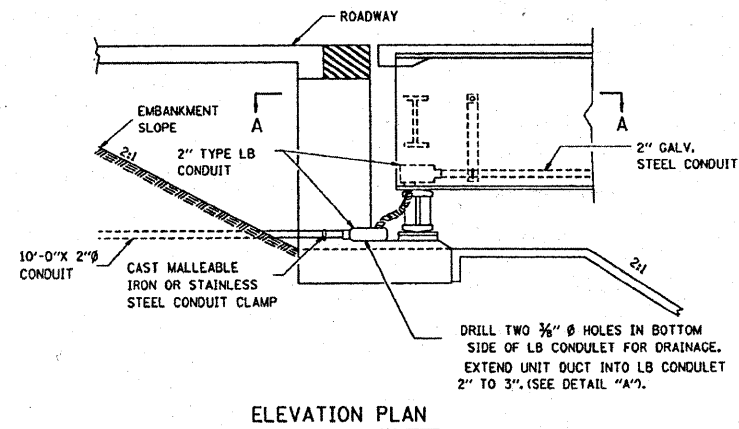
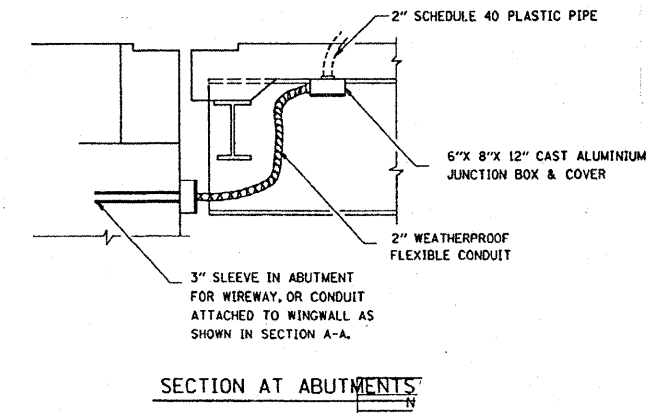


# CONDUIT DETAILS



CONDUIT CLAMPS SHALL BE MALLEABLE IRON. LOCKNUTS, BOLTS, AND WASHERS SHALL BE STAINLESS STEEL. 1/4" STEEL BRACKET SHALL BE HOT-DIPPED GALVANIZED AFTER FABRICATION. LOCATE ON 8'-0" CENTERS.



FILE NAME =	USER NAME = grantpm	DESIGNED -	REVISED -	<b>STATE OF ILLINOIS DEPARTMENT OF TRANSPORTATION</b>	<b>WEIGH-IN-MOTION SCALE DETAILS</b>	F.A.I. RTE.	SECTION	COUNTY	TOTAL SHEETS	SHEET NO.	
c:\pwork\psdot\grantpm\dms34287\d88403spl.dgn		DRAWN -	REVISED -			80	(81-1) R-1	ROCK ISLAND	292	208	
		CHECKED -	REVISED -			CONTRACT NO. 64933					
		DATE -	REVISED -			SCALE:	SHEET NO.	OF	SHEETS	STA.	TO STA.
						FED. ROAD DIST. NO. ILLINOIS FED. AID PROJECT					