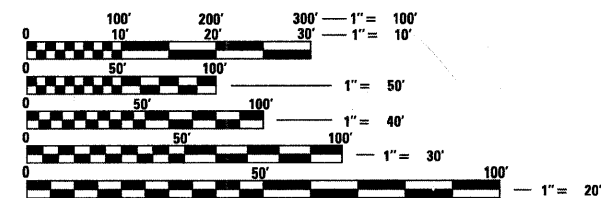


**INDEX OF SHEETS**

- 1 Cover Sheets and Index of Sheets
- 2 Summary of Quantities
- 3-4 General Notes
- 5-13 Typical Sections
- 14-17 Schedule of Quantities
- 18-21 ROW and Erosion Control Sheets
- 22-23 Alignment, Ties and Benchmark Sheets
- 24-27 Plan and Profiles
- 28-31 End Section Details
- 32-35 Staging
- 36-39 Boring Logs
- 40 Grading Around Wingwalls (20.4)
- 40 Detail of Hot-Mix Asphalt Shoulder at Guardrail (23.4)
- 40 Delineator and Post (37.4)
- 40 Typical Benching Detail on Existing Embankment (50.4)
- 41 Lettering for Nameplate (89.4)
- 41 Tree Replacement Schedule (90.4)
- 41 Stop Line Sign For Temporary Signals (99.4)
- 42 Erosion Control Detail For Silt Filter Fence (29.2)
- 42 Field Tile Junction Vaults (30.2)
- 43 Informational Warning Sign (For Narrow Travel Lanes)(39.2)
- 43 Witness Markers & Permanent Survey Markers (66.2)
- 44 Storm Water Pollution Prevention Plan Erosion Control Plan (2.1)
- 45-47 Typical Pavement Marking (41.1)
- 48 Details of Planting and Bracing Trees (92.1)
- 49-59 Cross Sections

**STATE STANDARDS**

- 000001-05 Standard Symbols, Abbreviations and Patterns
- 001001-02 Areas of Reinforcement Bars
- 280001-04 Temporary Erosion Control Systems
- 442201-03 Class C and D Patches
- 515001-03 Name Plate For Bridges
- 630001-08 Steel Plate Beam Guardrail
- 630201-06 PCC/HMA Stabilization at Steel Plate Beam Guardrail
- 630301-05 Shoulder Widening for Type 1 (Special) Guardrail Terminals
- 635001-01 Delineators
- 635006-03 Reflector and Terminal Marker Placement
- 635011-02 Reflector Marker and Mounting Details
- 666001-01 Right-of-Way Markers
- 701006-03 Off-Rd Operations, 2L, 2W, 15' to 24" From Pavement Edge
- 701011-02 Off-Rd Moving Operations, 2L, 2W, Day Only
- 701201-03 Lane Closure, 2L, 2W, Day Only, For Speeds  $\geq$  45 MPH
- 701301-03 Lane Closure, 2L, 2W, Short Time Operations
- 701311-03 Lane Closure, 2L, 2W, Moving Operations - Day Only
- 701321-10 Lane Closure, 2L, 2W, Bridge Repair With Barrier
- 701326-03 Lane Closure, 2L, 2W, Pavement Widening, For Speeds  $\geq$  45 MPH
- 701901-01 Traffic Control Devices
- 704001-05 Temporary Concrete Barrier
- 720011-01 Metal Posts for Signs, Markers, and Delineators
- 728001-01 Telescoping Steel Sign Support
- 729001-01 Applications of Types A & B Metal Posts (For Signs and Markers)
- 780001-02 Typical Pavement Markings
- 886001-01 Detector Loop Installations
- 886006-01 Typical Layout For Detection Loops



FULL SIZE PLANS HAVE BEEN PREPARED USING STANDARD ENGINEERING SCALES. REDUCED SIZED PLANS WILL NOT CONFORM TO STANDARD SCALES. IN MAKING MEASUREMENTS ON REDUCED PLANS, THE ABOVE SCALES MAY BE USED.

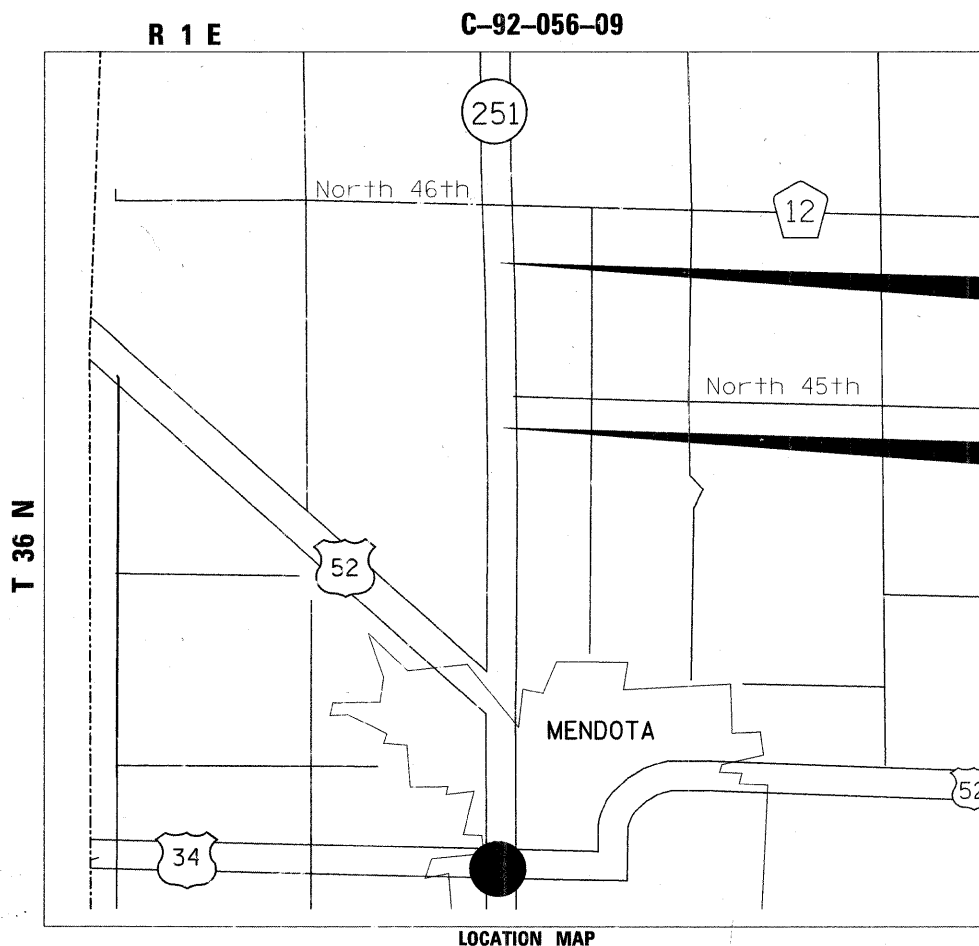
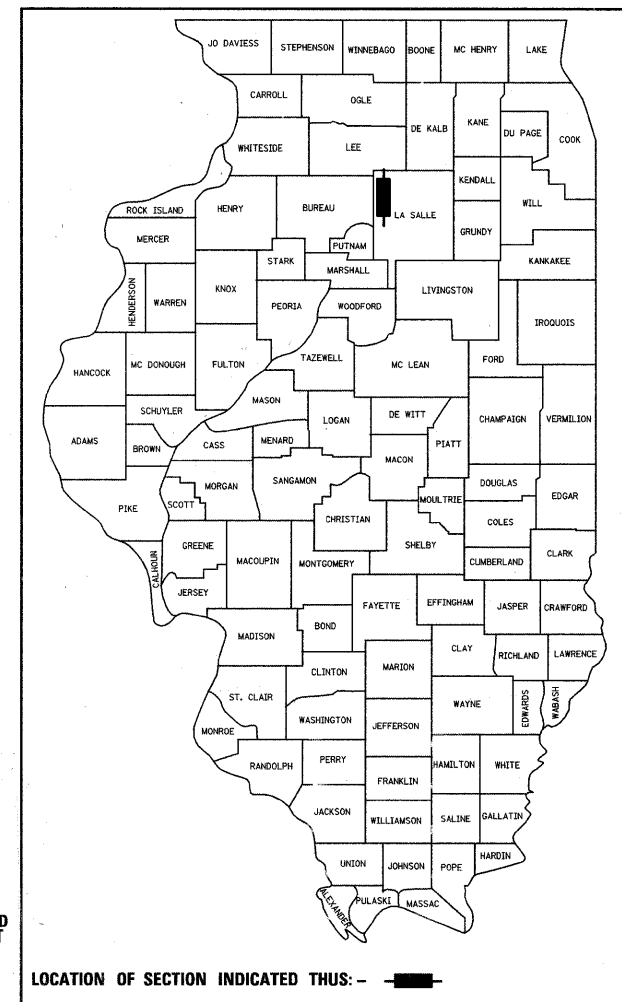
J.U.L.I.E.  
JOINT UTILITY LOCATION INFORMATION FOR EXCAVATION  
1-800-892-0123  
OR 811

**PROJECT ENGINEER - BECKY MARRUFFO**  
**SQUAD LEADER - JASON FORD (815/284-5942)**  
**CONSULTANT (END SECTIONS)- JAMES HAMILTON**  
**HAMILTON ENGINEERING, INC (217/245-7164)**  
**Mendota Township - Sections 20,21**  
**CONTRACT NO. 64A07**

**STATE OF ILLINOIS**  
**DEPARTMENT OF TRANSPORTATION**  
**DIVISION OF HIGHWAYS**  
**PROPOSED**  
**HIGHWAY PLANS**  
**FAS ROUTE 1177 (IL 251)**  
**SECTION 111T**  
**PROJECT ACRS 1177(113)**  
**LASALLE COUNTY**

F.A.S. RTE.	SECTION	COUNTY	TOTAL SHEETS	SHEET NO.
1177	111T	Lasalle	59	1
FED. ROAD DIST. NO.	ILLINOIS	CONTRACT NO. 64A07		

**D-92-055-04**



**IMPROVEMENT BEGINS**  
**STA. 2518 + 32**  
**PIKE CREEK**  
EXISTING BRIDGE REMOVAL AND REPLACED WITH A TRIPLE 8'X8' TRIPLE CELL PRECAST BOX CULVERT  
**IMPROVEMENT ENDS**  
**STA. 2523 + 19**

**IMPROVEMENT BEGINS**  
**STA. 2472 + 08**  
EXISTING CULVERT REMOVED, RCP FILLED, REPLACED WITH AN 8' X 4' PRECAST BOX CULVERT WITH DROP BOX  
**IMPROVEMENT ENDS**  
**STA. 2476 + 20**

GROSS LENGTH = 1170.4 FT. = 0.22 MILE  
NET LENGTH = 1170.4 FT. = 0.22 MILE

REVISOR'S SYMBOL REVISED SHEET 2-24-09

STATE OF ILLINOIS  
DEPARTMENT OF TRANSPORTATION  
DIVISION OF HIGHWAYS

SUBMITTED December 29, 2008

George F. Roman  
DEPUTY DIRECTOR OF HIGHWAYS, REGION ENGINEER

January 30, 2009  
Charles J. Ingersoll  
ENGINEER OF DESIGN AND ENVIRONMENT

January 30, 2009  
Christine M. Reed  
DIRECTOR OF HIGHWAYS, CHIEF ENGINEER

**PRINTED BY THE AUTHORITY**  
**OF THE STATE OF ILLINOIS**