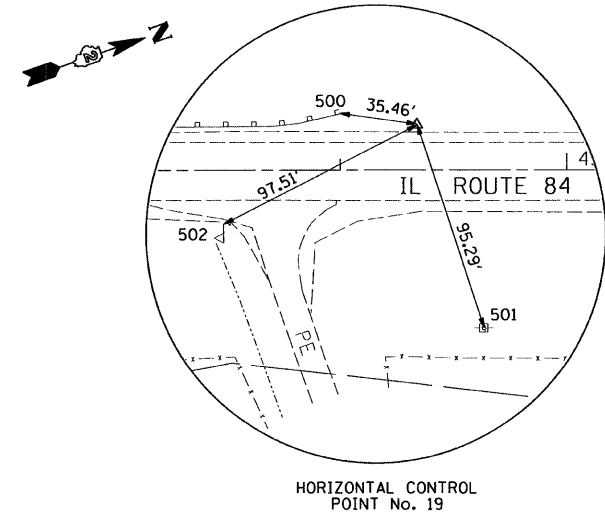
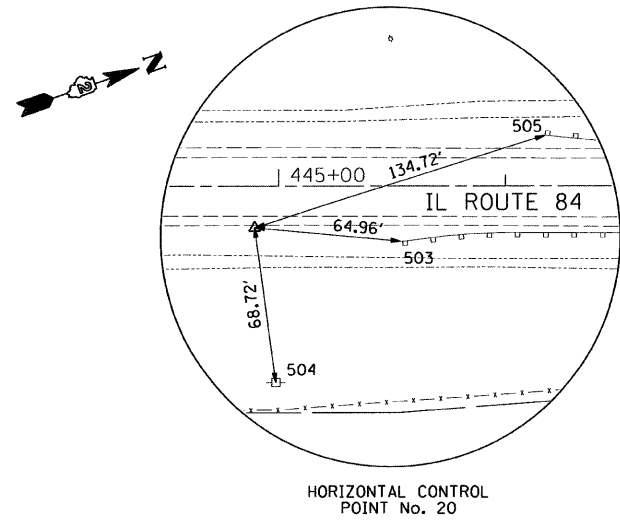
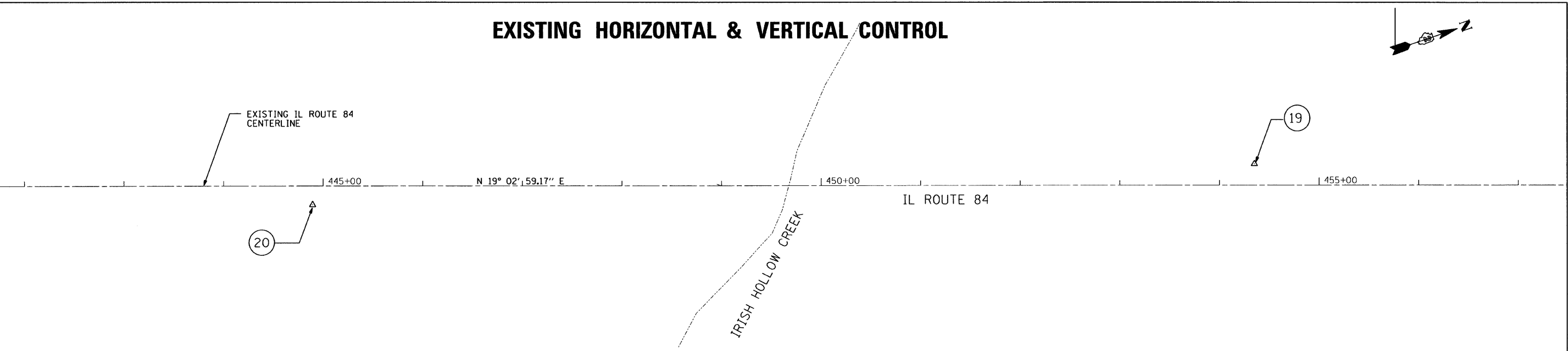


EXISTING HORIZONTAL & VERTICAL CONTROL



HORIZONTAL CONTROL POINTS							
POINT	NORTH	EAST	ELEVATION	CHAIN	STATION	OFFSET	DESCRIPTION
19	2049945.2249	2265463.5954	642.3990	IL84	454+35.0100	21.3065' LT	SURVEY POINT, PIN & CAP
20	2049038.2116	2265192.8039	652.0097	IL84	444+89.2900	18.7712' RT	SURVEY POINT, PIN & CAP

SURVEY WORK POINTS							
POINT	NORTH	EAST	ELEVATION	CHAIN	STATION	OFFSET	DESCRIPTION
100	2049626.4814	2265332.2712	632.0736	IL84	450+90.8600	41.4043' LT	SURVEY POINT, 60d NAIL
101	2049490.5954	2265222.3536	634.3061	IL84	449+26.5400	100.9506' LT	SURVEY POINT, 60d NAIL
102	2049356.6450	2265303.8125	649.3796	IL84	448+26.5200	19.7672' RT	SURVEY POINT, PIN & CAP
103	2049197.1053	2265302.6205	661.2224	IL84	446+75.3200	70.7126' RT	SURVEY POINT, 60d NAIL

BENCH MARKS							
POINT	NORTH	EAST	ELEVATION	CHAIN	STATION	OFFSET	DESCRIPTION
419	2049611.5689	2265353.0167	646.8047	IL84	450+83.5400	16.9277' LT	BRASS DISK IN TOP OF WEST PARAPET WALL ON THE NORTH END OF EXISTING S.N. 043-0037

REFERENCE TIES							
POINT	NORTH	EAST	ELEVATION	CHAIN	STATION	OFFSET	DESCRIPTION
500	2049913.0951	2265448.5881	641.6420	IL84	453+99.7400	25.0051' LT	STEEL PLATE BEAM GUARDRAIL ,END OF GUARDRAIL
501	2049942.2858	2265558.8437	632.7707	IL84	454+63.3200	69.6848' RT	POWER POLE, PAINT
502	2049848.7657	2265477.9078	641.9501	IL84	453+48.5100	23.7053' RT	MAILBOX, PAINT
503	2049097.5290	2265219.2750	651.1867	IL84	445+54.0000	24.4321' RT	STEEL PLATE BEAM GUARDRAIL ,END OF GUARDRAIL
504	2049024.7126	2265260.1888	664.0481	IL84	444+98.5200	86.8718' RT	POWER POLE, PAINT
505	2049172.8998	2265195.6897	651.0400	IL84	446+17.5400	22.4618' LT	STEEL PLATE BEAM GUARDRAIL ,END OF GUARDRAIL

FILE NAME = #FILEL#	USER NAME = .USER.	DESIGNED - DRAWN - WS	REVISED - REVISED -
	PLOT SCALE = 50.0000' / IN.	CHECKED - RJS	REVISED -
	PLOT DATE = 12/12/2008	DATE - 12/11/08	REVISED -

**STATE OF ILLINOIS
DEPARTMENT OF TRANSPORTATION**

**EXISTING HORIZONTAL & VERTICAL CONTROL
IL 84 OVER IRISH HOLLOW CREEK, S.N. 043-0037**

SCALE: 50' SHEET NO. OF SHEETS STA. TO STA.

F.A.P. RTE. 308	SECTION (103C-1BR)D	COUNTY JO DAVIESS	TOTAL SHEETS 62	SHEET NO. 11
FED. ROAD DIST. NO.		ILLINOIS FED. AID PROJECT		
CONTRACT NO. 64C03				

H:\Jobs\2008\20083010\CAD\Site\vdgn\00\Alignment&Ties.dgn
12/12/2008 10:48:21 AM