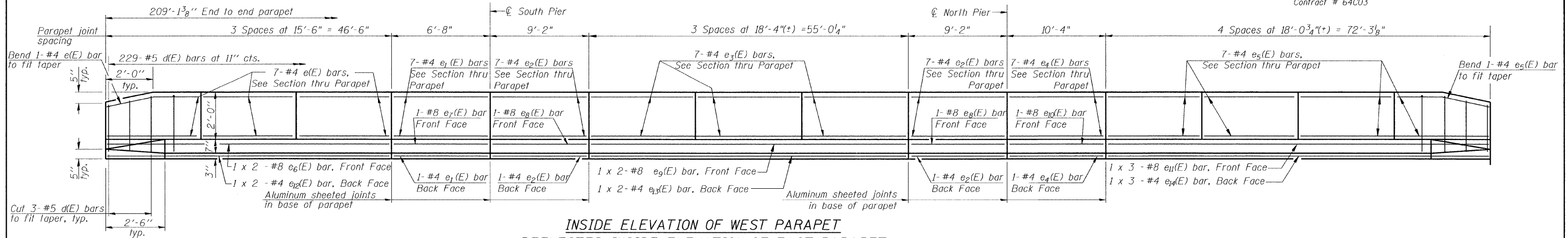
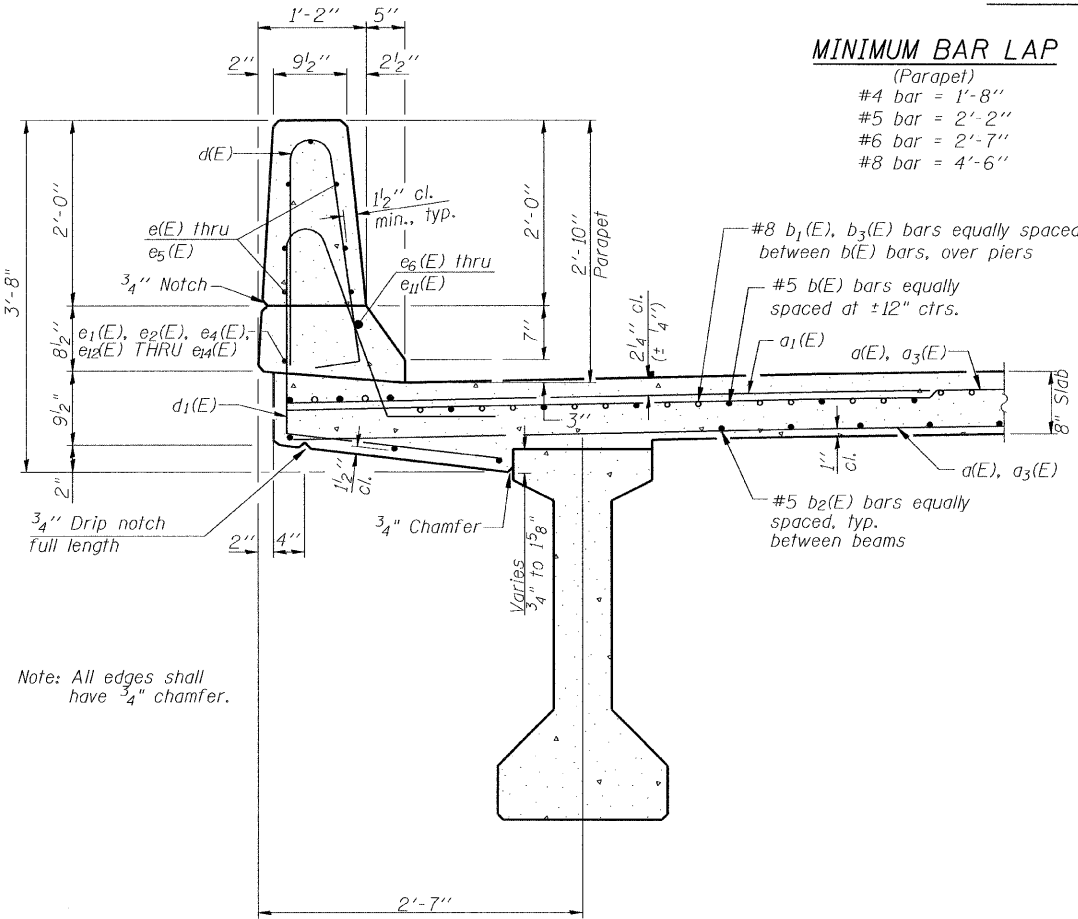


Contract # 64C03

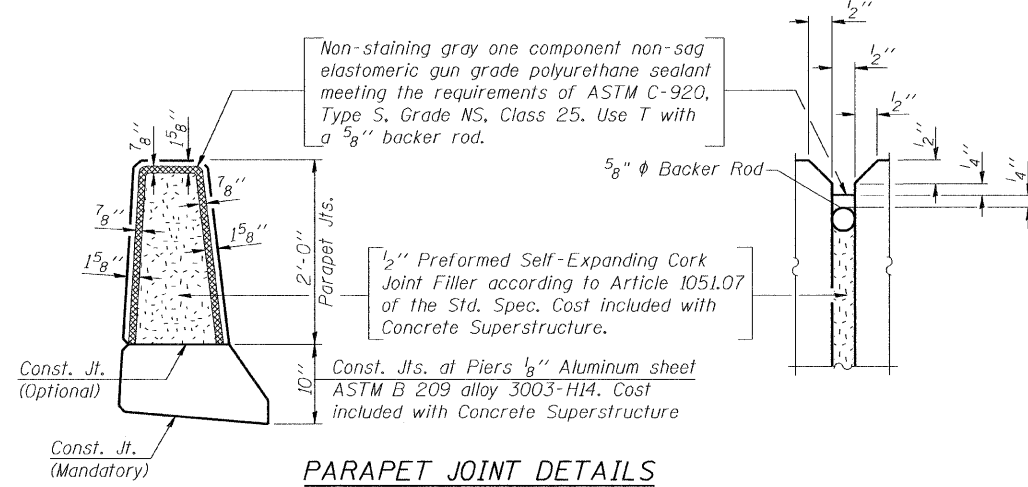


INSIDE ELEVATION OF WEST PARAPET
REFLECTED INSIDE ELEVATION OF EAST PARAPET



SECTION THRU PARAPET

MINIMUM BAR LAP
(Parapet)
#4 bar = 1'-8"
#5 bar = 2'-2"
#6 bar = 2'-7"
#8 bar = 4'-6"



PARAPET JOINT DETAILS

SUPERSTRUCTURE BILL OF MATERIAL

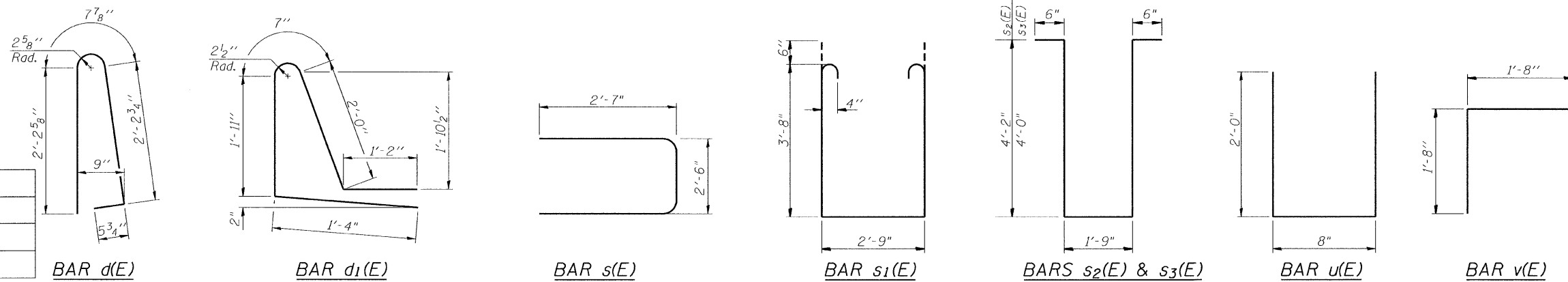
Bar	No.	Size	Length	Shape
a(E)	604	#5	15'-7"	—
a1(E)	710	#6	6'-6"	—
a2(E)	4	#5	16'-10"	—
a3(E)	604	#5	18'-7"	—
a4(E)	4	#5	20'-1"	—
b(E)	304	#5	28'-0"	—
b1(E)	36	#6	33'-0"	—
b2(E)	279	#5	25'-2"	—
b3(E)	68	#6	48'-0"	—
d(E)	458	#5	5'-7"	└
d1(E)	458	#5	7'-0"	└
e(E)	42	#4	15'-2"	—
e1(E)	16	#4	6'-4"	—
e2(E)	32	#4	8'-10"	—
e3(E)	42	#4	18'-0"	—
e4(E)	16	#4	10'-0"	—
e5(E)	56	#4	17'-8"	—
e6(E)	4	#8	25'-4"	—
e7(E)	2	#8	6'-4"	—
e8(E)	4	#8	8'-10"	—
e9(E)	4	#8	29'-8"	—
e10(E)	2	#8	10'-0"	—
e11(E)	6	#8	27'-0"	—
e12(E)	4	#4	23'-11"	—
e13(E)	4	#4	28'-3"	—
e14(E)	6	#4	25'-2"	—

Bar	No.	Size	Length	Shape
m(E)	20	#6	16'-11"	—
m1(E)	16	#6	4'-2"	—
m2(E)	8	#6	6'-9"	—
m3(E)	8	#6	8'-6"	—
m4(E)	4	#6	5'-10"	—
m5(E)	4	#6	8'-3"	—
m6(E)	20	#6	20'-2"	—
m7(E)	4	#6	3'-9"	—
m8(E)	32	#4	5'-6"	—
m9(E)	8	#4	4'-2"	—
m10(E)	16	#6	4'-2"	—
m11(E)	4	#6	3'-6"	—
m12(E)	6	#8	6'-4"	—
m13(E)	4	#8	3'-2"	—
s(E)	62	#5	7'-8"	└
s1(E)	62	#5	11'-1"	└
s2(E)	25	#5	11'-1"	└
s3(E)	25	#5	10'-9"	└
u(E)	62	#5	4'-8"	└
v(E)	68	#5	3'-4"	└
Concrete Superstructure		Cu. Yds.	306.0	
Bridge Deck Grooving		Sq. Yds.	698	
Protective Coat		Sq. Yds.	920	
Reinforcement Bars, Epoxy Coated		Lbs.	65,130	

Bars indicated thus 1 x 2 - #5 etc. indicates 1 line of bars with 2 lengths per line.

The quantities include reinforcement and concrete superstructure for the diaphragms at abutments and at piers.

DESIGNED	E.E.J.
CHECKED	J.Z.
DRAWN	M.S.M.
CHECKED	E.E.J.



DECK DETAILS
IL Route 84 over Irish Hollow Creek
F.A.P. RTE 308, SECTION (103C-1BR)D
JO DAVIESS COUNTY
STATION 449+62.06
DATE: 12-11-08 S.N. 043-0037
GRAEF, ANHALT, SCHLOEMER & ASSOCIATES INC
CHICAGO ILLINOIS

2012/12/20 08:00:00 12008-3003-003-0037-sht12.dgn