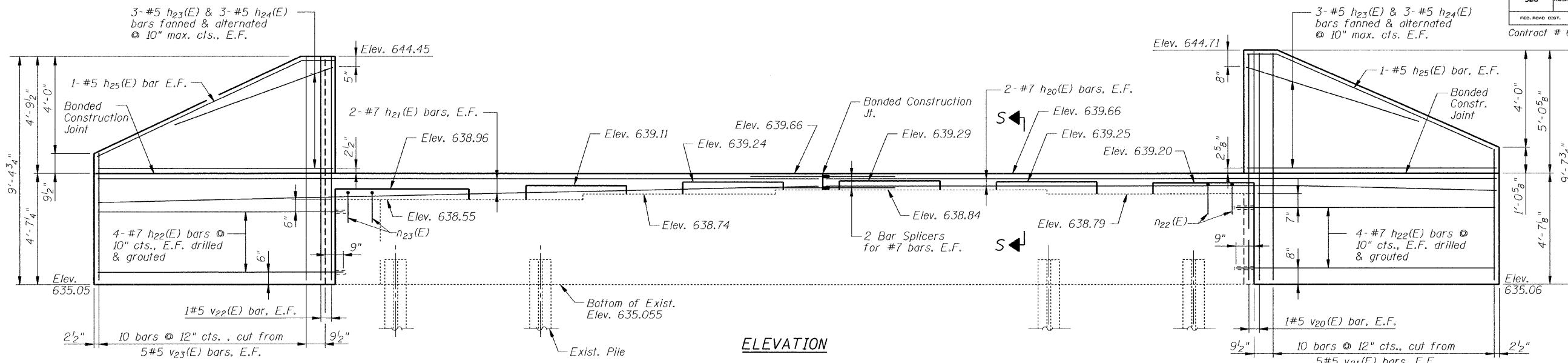
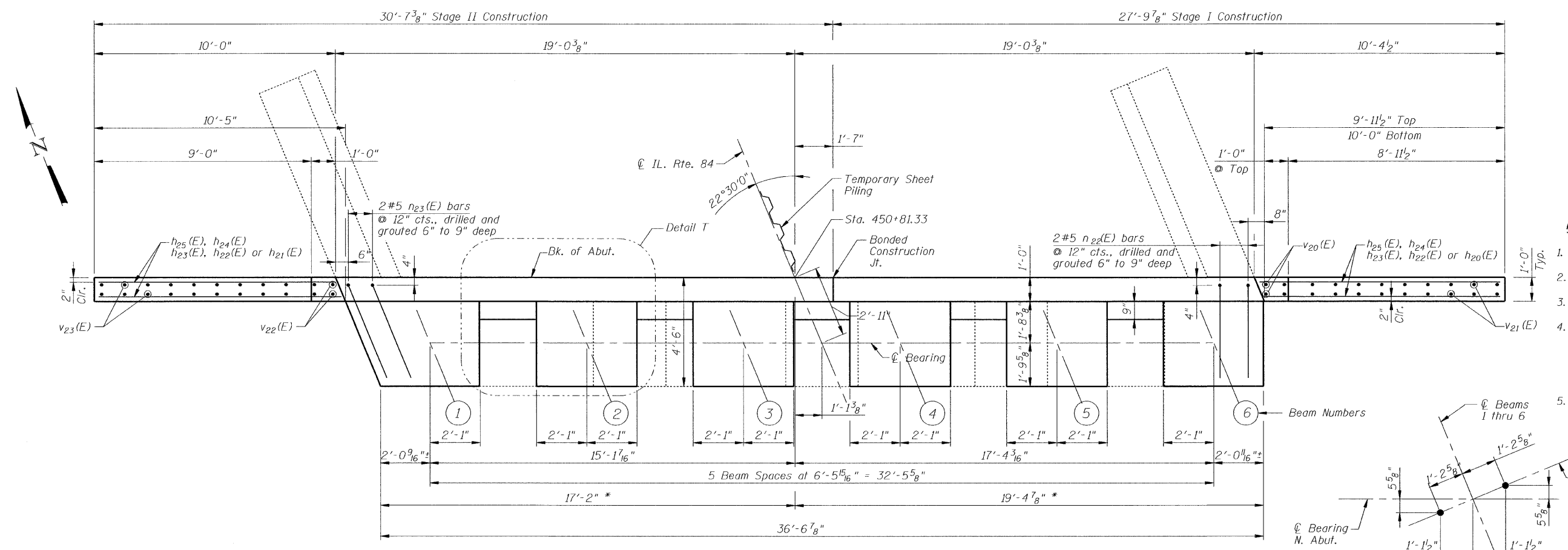


Contract # 64C03



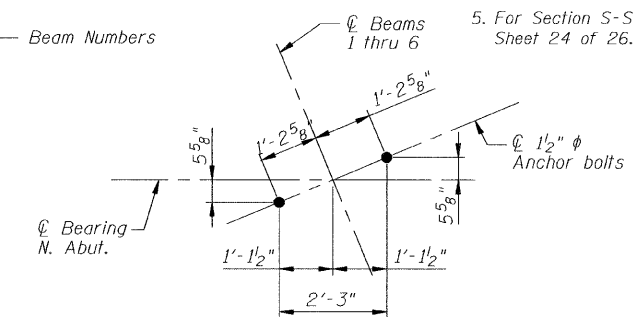
BILL OF MATERIAL

Bar	No.	Size	Length	Shape
h20(E)	4	#7	27'-6"	—
h21(E)	4	#7	30'-3"	—
h22(E)	16	#7	10'-8"	—
h23(E)	12	#5	9'-9"	—
h24(E)	12	#5	7'-6"	—
h25(E)	4	#5	10'-7"	—
n20(E)	30	#5	3'-2"	□
n21(E)	36	#5	3'-7"	□
n22(E)	2	#5	5'-0"	□
n23(E)	2	#5	5'-4"	□
u20(E)	52	#5	1'-10"	□
u21(E)	6	#5	4'-6"	□
u22(E)	12	#5	9'-5"	□
v20(E)	2	#5	9'-3"	—
v21(E)	10	#5	14'-6"	—
v22(E)	2	#5	9'-0"	—
v23(E)	10	#5	14'-0"	—
Porous Granular Embankment (Special)		Cu. Yd.	75	
Structure Excavation		Cu. Yd.	76	
Concrete Structures		Cu. Yd.	8.7	
Reinforcement Bars, Epoxy Coated		Pound	1,920	
Geocomposite Wall Drain		Sq. Yd.	50	
Pipe Underdrains for Structures, 4"		Foot	82	
Polymer Modified Portland Cement Mortar		Sq. Ft.	52	



NOTES:

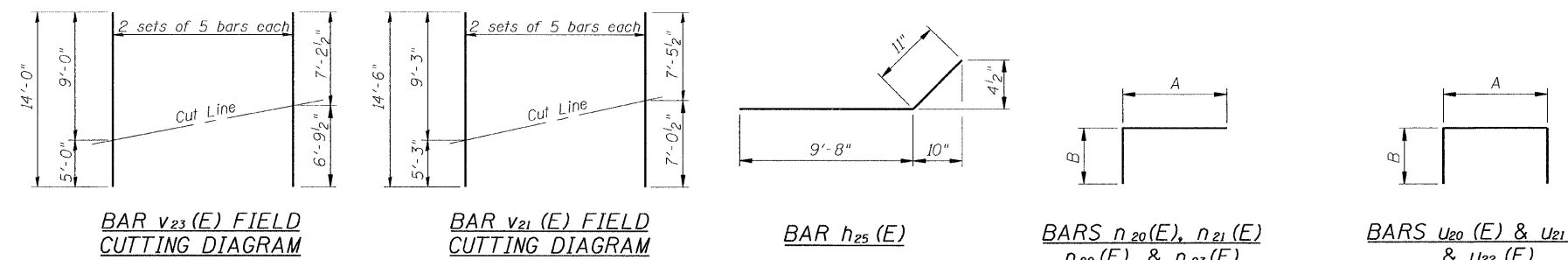
1. Space reinforcement to miss anchor bolts.
2. For Bar Splicer details see Sheet 26 of 26.
3. See Sheet 6 of 26 for Temporary Sheet Piling.
4. * Dimensions as indicated are original design dimensions. Reproduced location may not generate the dimensions shown. These dimensions may need to be adjusted based on reproduced location.
5. For Section S-S and Detail T, see Sheet 24 of 26.



ANCHOR BOLT LOCATION PLAN

BAR DIMENSIONS

Bar	A	B
n20(E)	2'-2"	1'-0"
n21(E)	2'-8"	11"
n22(E)	4'-0"	1'-0"
n23(E)	4'-4"	1'-0"
u20(E)	8"	7"
u21(E)	3'-6"	6"
u22(E)	3'-7"	2'-11"



DESIGNED	J.J.G.
CHECKED	S.D.H.
DRAWN	M.S.M.
CHECKED	J.J.G.

NORTH ABUTMENT
 IL Route 84 over Irish Hollow Creek
 F.A.P. RTE 308, SECTION (103C-1BR)D
 JO DAVIESS COUNTY
 STATION 449+62.06
 DATE: 12-11-08 S.N. 043-0037
 GRAEF, ANHALT, SCHLOEMER & ASSOCIATES INC
 CHICAGO ILLINOIS

P:\p2008\p2008-3000-0043-0037-snr23.dgn
 12/22/2008