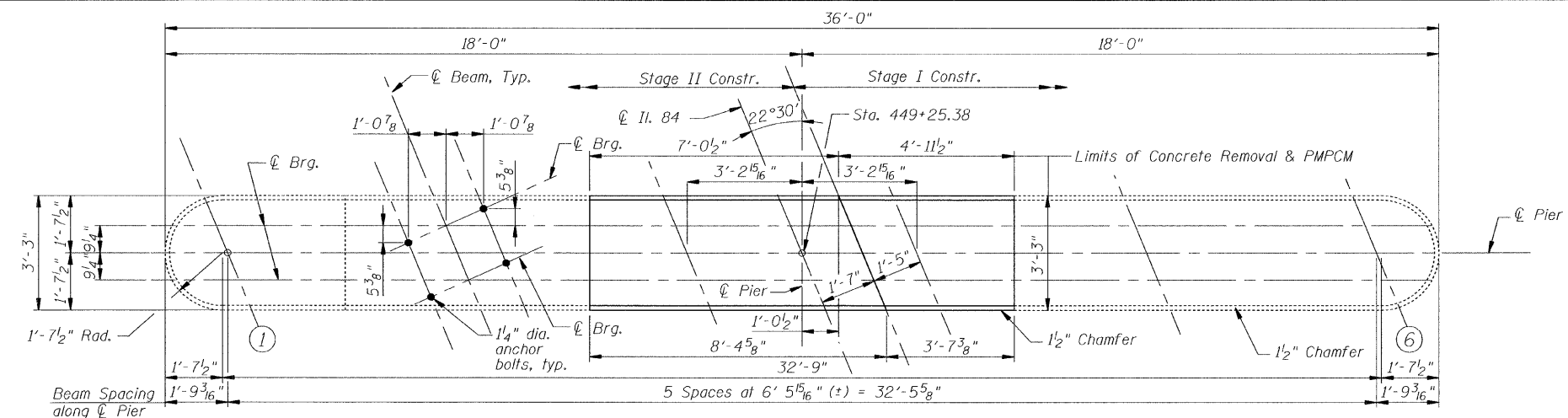
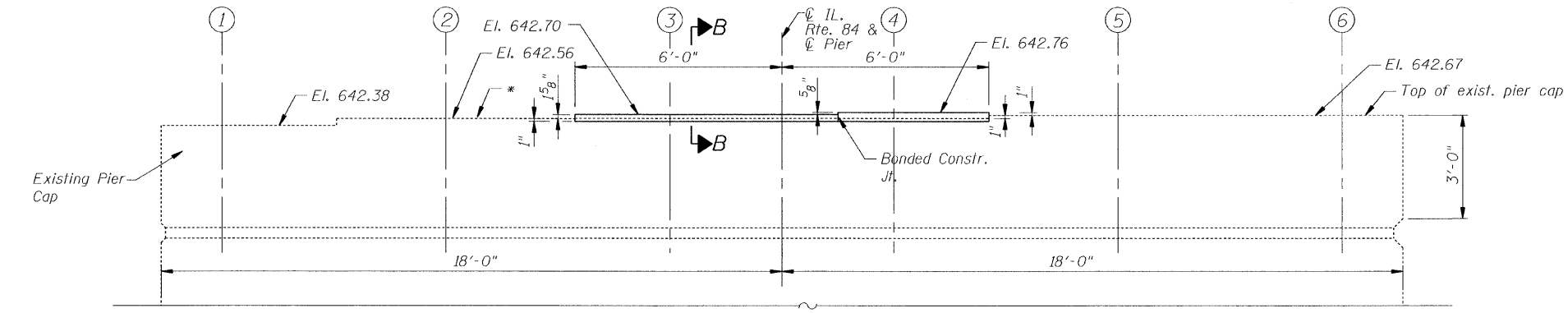


Contract # 64C03

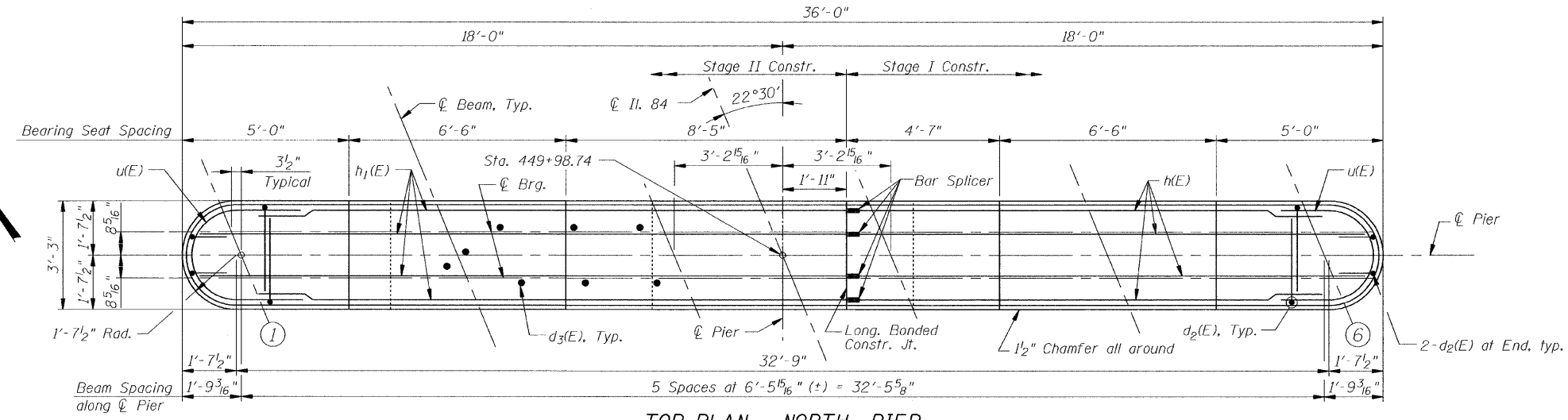


TOP PLAN - SOUTH PIER

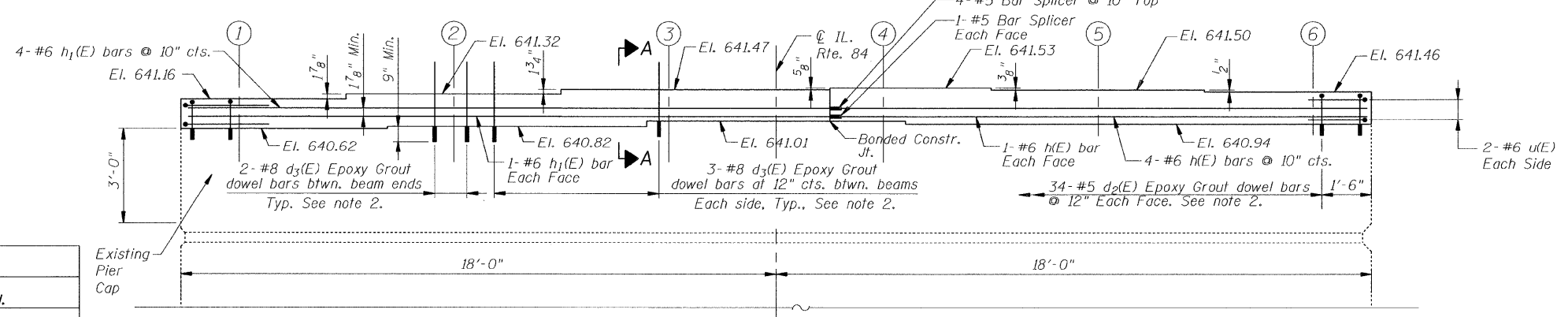


ELEVATION - SOUTH PIER CAP
(LOOKING NORTH)

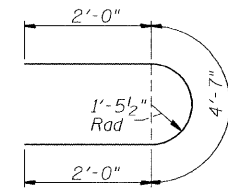
* Grind 1/4" (+) at bearing seat of beam ② as necessary.



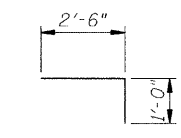
TOP PLAN - NORTH PIER



ELEVATION - NORTH PIER CAP
(LOOKING NORTH)



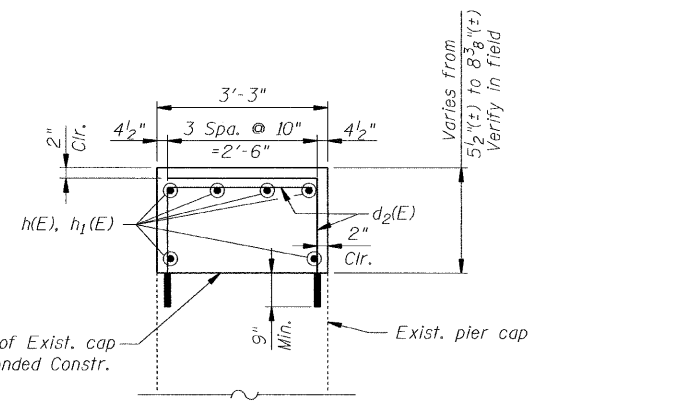
BAR u(E)



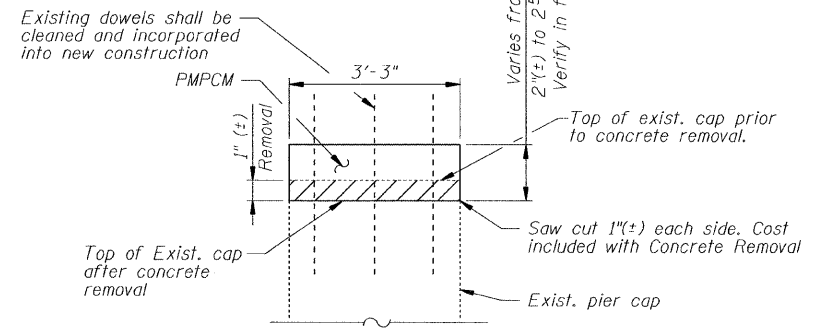
BAR d2(E)

BILL OF MATERIAL

Bar	No.	Size	Length	Shape
d2(E)	72	#5	3'-6"	U
d3(E)	42	#8	3'-1"	U
h(E)	6	#6	14'-8"	U
h1(E)	6	#6	18'-0"	U
u(E)	4	#6	8'-7"	U
Concrete Removal		Cu. Yds.	0.2	
Structure Excavation		Cu. Yds.	1,412	
Concrete Structures		Cu. Yds.	2.8	
Reinforcement Bars, Epoxy coated		Lbs.	960	
Polymer Modified Portland Cement Mortar		Sq. Ft.	39	



SECTION A-A

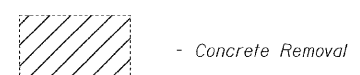


SECTION B-B

Notes:

- Verify existing pier cap elevations in the field.
- Dowel bars into existing concrete shall be epoxy grouted in accordance with Std. Specification Section 584.
- PMPCM - Denotes Polymer Modified Portland Cement Mortar

LEGEND



PIER DETAILS
 IL Route 84 over Irish Hollow Creek
 F.A.P. RTE 308, SECTION (103C-1BR)D
 JO DAVIESS COUNTY
 STATION 449+62.06
 DATE: 12-11-08 S.N. 043-0037
 GRAEF, ANHALT, SCHLOEMER & ASSOCIATES INC
 CHICAGO ILLINOIS

DESIGNED	J.Z.
CHECKED	S.D.H.
DRAWN	M.S.M.
CHECKED	J.Z.

C:\p2\2008\12\11\2008-3000\00_043-0037-sprf25.dgn
 12/11/2008