

F.A.P. RTE.	SECTION	COUNTY	TOTAL SHEETS	SHEET NO.
303	(40R)T	WINNEBAGO	67	1
FED. ROAD DIST. NO.	ILLINOIS	CONTRACT NO. 64C65		

STATE OF ILLINOIS  
DEPARTMENT OF TRANSPORTATION  
DIVISION OF HIGHWAYS

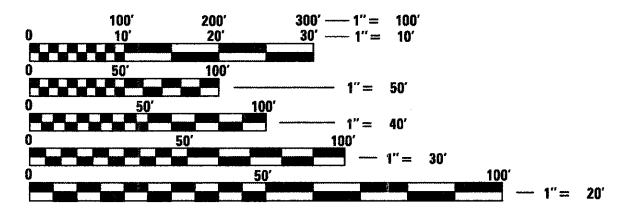
**PROPOSED  
HIGHWAY PLANS**

FAP ROUTE 303 (US BUS 20)  
SECTION (40R)T  
PROJECT ACNHF-0303(041)  
WINNEBAGO COUNTY  
C-92-101-08

FOR INDEX OF SHEETS, SEE SHEET NO. 2  
FOR STATE STANDARDS, SEE SHEET NO. 2

EXISTING: SN 101-1008  
PROPOSED: SN 101-1079  
STA 73+70.09 - REMOVE EXISTING  
12' X 5' BOX CULVERT (87'-2") AND  
CONSTRUCT A PRECAST 2-CELL  
12' X 4' BOX CULVERT (96'-0")

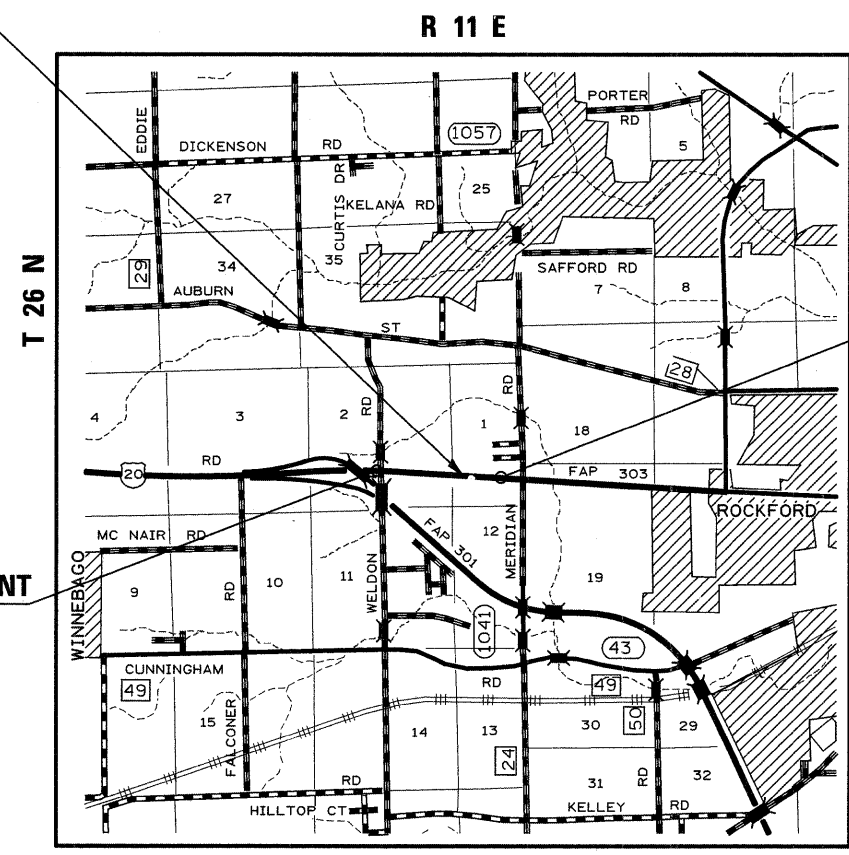
WINNEBAGO TOWNSHIP  
SECTIONS 1 - 2



FULL SIZE PLANS HAVE BEEN PREPARED USING STANDARD  
ENGINEERING SCALES. REDUCED SIZED PLANS WILL NOT  
CONFORM TO STANDARD SCALES. IN MAKING MEASUREMENTS  
ON REDUCED PLANS, THE ABOVE SCALES MAY BE USED.

J.U.L.I.E.  
JOINT UTILITY LOCATION INFORMATION FOR EXCAVATION  
1-800-892-0123  
OR 811

PROJECT ENGINEER: MASOOD AHMAD  
SENIOR SQUAD LEADER: SAMEER ABDULLAH (815)284-5935  
STUDIES & PLANS SQUAD ENGINEER: COREY CONDERMAN (815)284-5936  
CONTRACT NO. 64C65



SECTION & IMPROVEMENT  
BEGINS STA 37+64.98

SECTION & IMPROVEMENT  
ENDS STA 83+00

GROSS LENGTH OF PROJECT = 4535.02 FEET = 0.86 MILE  
NET LENGTH OF PROJECT = 4535.02 FEET = 0.86 MILE



LOCATION OF SECTION INDICATED THIS: - [shaded rectangle]

STATE OF ILLINOIS  
DEPARTMENT OF TRANSPORTATION  
DIVISION OF HIGHWAYS

SUBMITTED August 5 20 08  
George F. Ryan  
DEPUTY DIRECTOR OF HIGHWAYS, REGION ENGINEER

December 5 20 08  
Eric E. Harrel  
ENGINEER OF DESIGN AND ENVIRONMENT

December 5 20 08  
Christine M. Reed  
DIRECTOR OF HIGHWAYS, CHIEF ENGINEER

PRINTED BY THE AUTHORITY  
OF THE STATE OF ILLINOIS