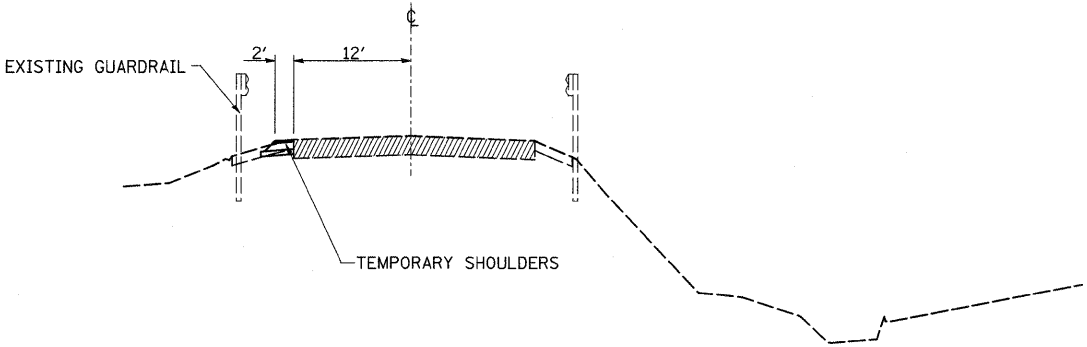


STAGING TYPICAL SECTIONS

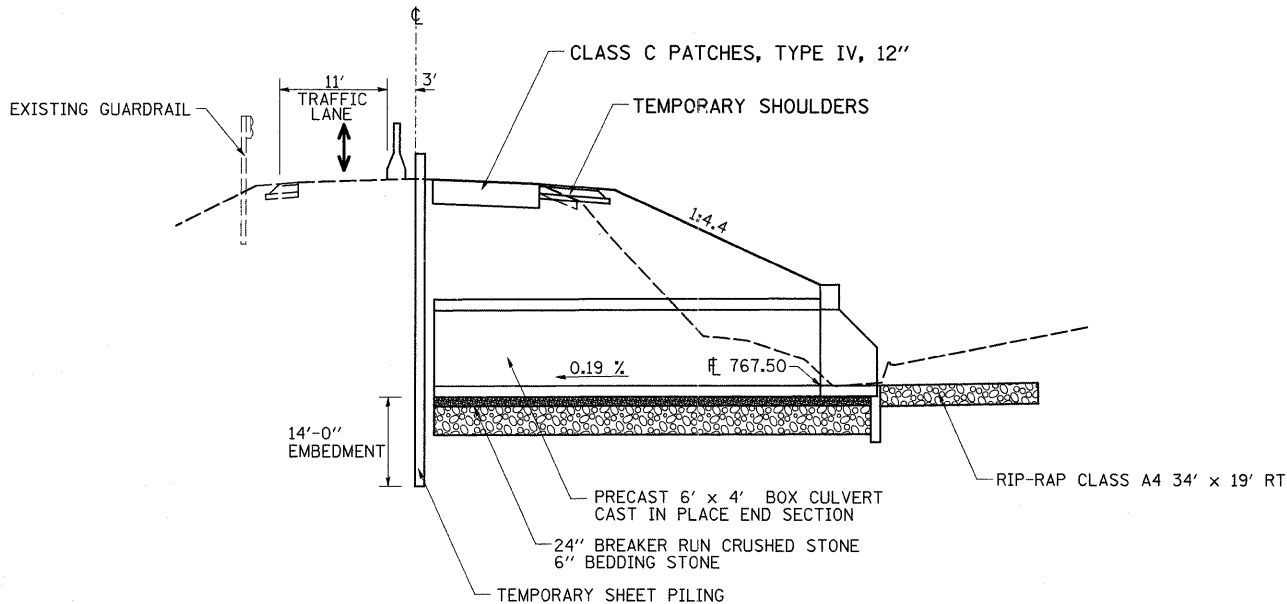
6'x4' Precast Box Culvert @ 35 Skew

STA. 777 + 76

STAGE 1



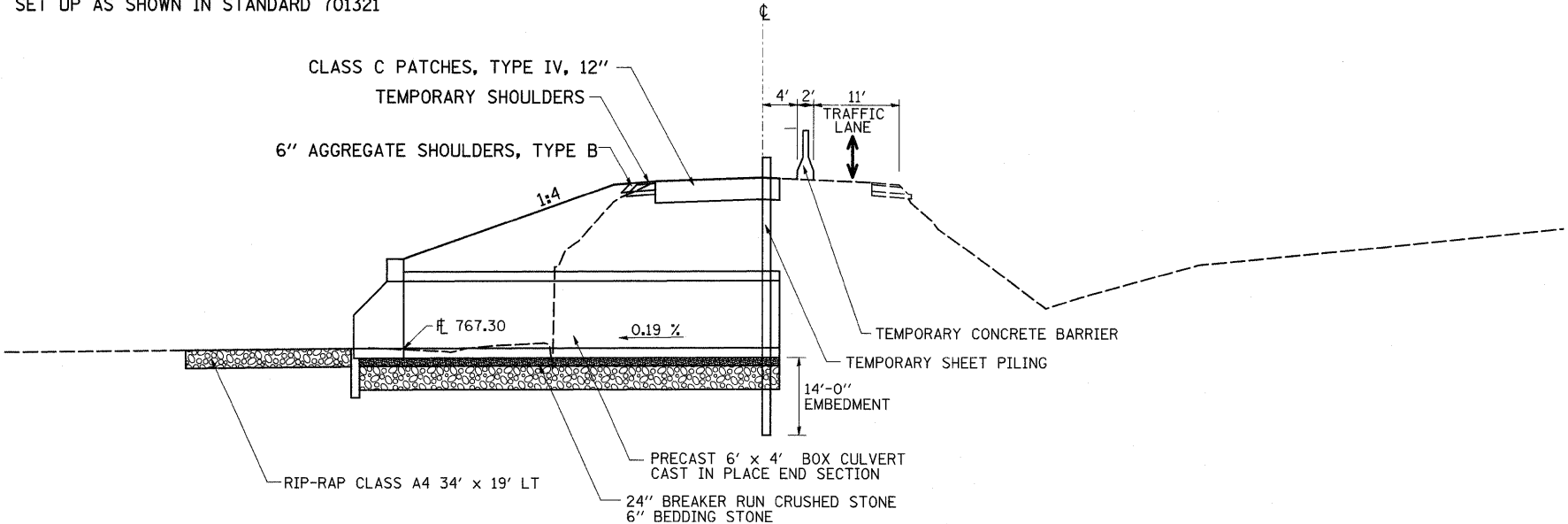
STAGE 2



GENERAL NOTES:

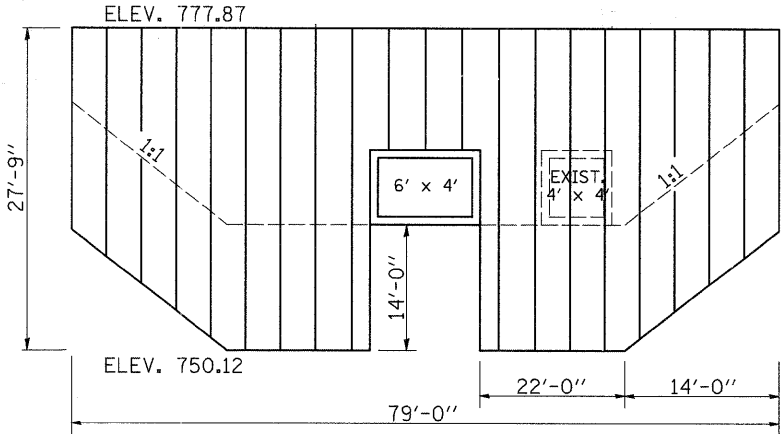
- 1) TRAFFIC CONTROL TO BE SET UP AND PAID FOR ACCORDING TO TRAFFIC CONTROL AND PROTECTION STANDARD 701321.
- 2) THE CONTRACTOR IS RESPONSIBLE FOR MAINTAINING FLOW IN A MANNER ACCEPTABLE TO THE ENGINEER.
- 4) BARRIER WALL AND IMPACT ATTENUATORS SHALL BE SET UP AS SHOWN IN STANDARD 701321

STAGE 3



TEMPORARY SHEET PILING

If the Contractor chooses to alter the temporary cantilevered sheet piling design requirements shown on the plans, a design submittal including plan details and calculations sealed by an Illinois Licensed Structural Engineer will be required for review and acceptance by the Engineer.



SECTION MODULUS (s) = 19.0 in³/ft

FILE NAME =	USER NAME = hensonke	DESIGNED -	REVISED -	STATE OF ILLINOIS DEPARTMENT OF TRANSPORTATION	STAGING TYPICAL SECTIONS			F.A.P. RTE.	SECTION	COUNTY	TOTAL SHEETS	SHEET NO.
ct:\pw_work\PWIDOT\HENSONKE\dms34455\dl1506typ.dgn		DRAWN -	REVISED -					611	103T-2	HENRY	35	7
		CHECKED -	REVISED -		CONTRACT NO. 64C66							
		DATE -	REVISED -		SCALE:	SHEET NO.	OF	SHEETS	STA.	TO STA.	FED. ROAD DIST. NO.	ILLINOIS FED. AID PROJECT