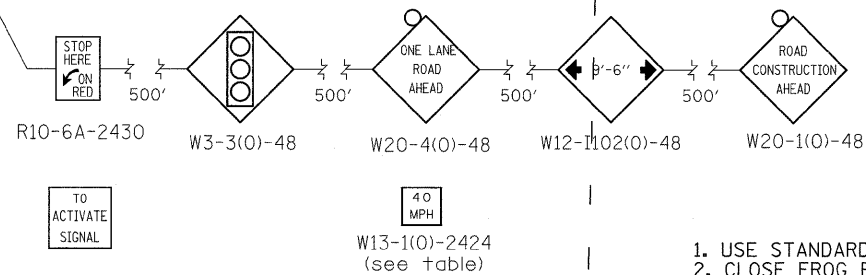
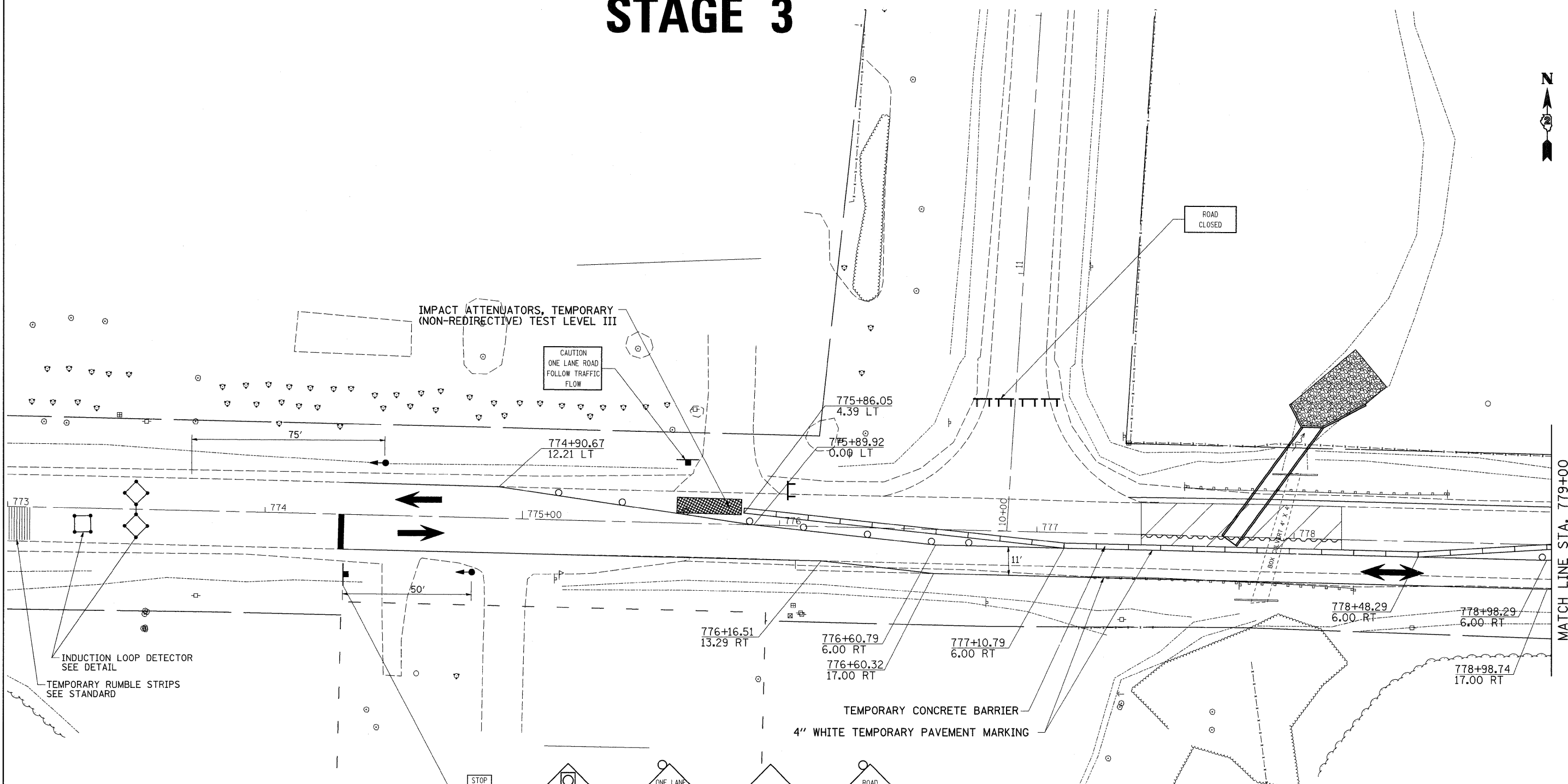


STAGE 3



STAGE 3 NOTES

1. USE STANDARD 701321 FOR CULVERT WORK.
2. CLOSE FROG POND ROAD DURING STAGE 3 CONSTRUCTION.
3. CONSTRUCT DOWNSTREAM SECTIONS OF CULVERT INCLUDING END SECTION, RIP-RAP, FENCING, AND EARTHWORK.
4. REMOVE ONLY TEMPORARY SHOULDER IN PATCH, REMAINDER TO STAY IN PLACE.
5. PLACE CLASS C PATCH OVER PATCH AREA.
6. ADDITIONAL SIGNING REQUIRED FOR SIDE ROAD AND DRIVEWAY.

	= WORK AREA
	= TYPE III BARRICADE WITH FLASHING LIGHTS
	= SIGN
	= BARRICADE, OR DRUM WITH STEADY BURNING LIGHTS
	= INDUCTION LOOP DETECTOR
	= TRAFFIC SIGNAL

FILE NAME =	USER NAME = hensonke	DESIGNED -	REVISED -
ct\pwork\FWIDOT\HENSONKE\dms34455\dl1506stg.dgn		DRAWN -	REVISED -
PLOT SCALE = 20.0000' / IN.		CHECKED -	REVISED -
PLOT DATE = Tue Dec 02 13:33:40 2008		DATE -	REVISED -

**STATE OF ILLINOIS
DEPARTMENT OF TRANSPORTATION**

STAGING PLANS

SCALE: SHEET NO. OF SHEETS STA. TO STA.

F.A.P. RTE.	SECTION	COUNTY	TOTAL SHEETS	SHEET NO.
611	103T-2	HENRY	35	16
FED. ROAD DIST. NO.			ILLINOIS FED. AID PROJECT	
CONTRACT NO. 64C66				