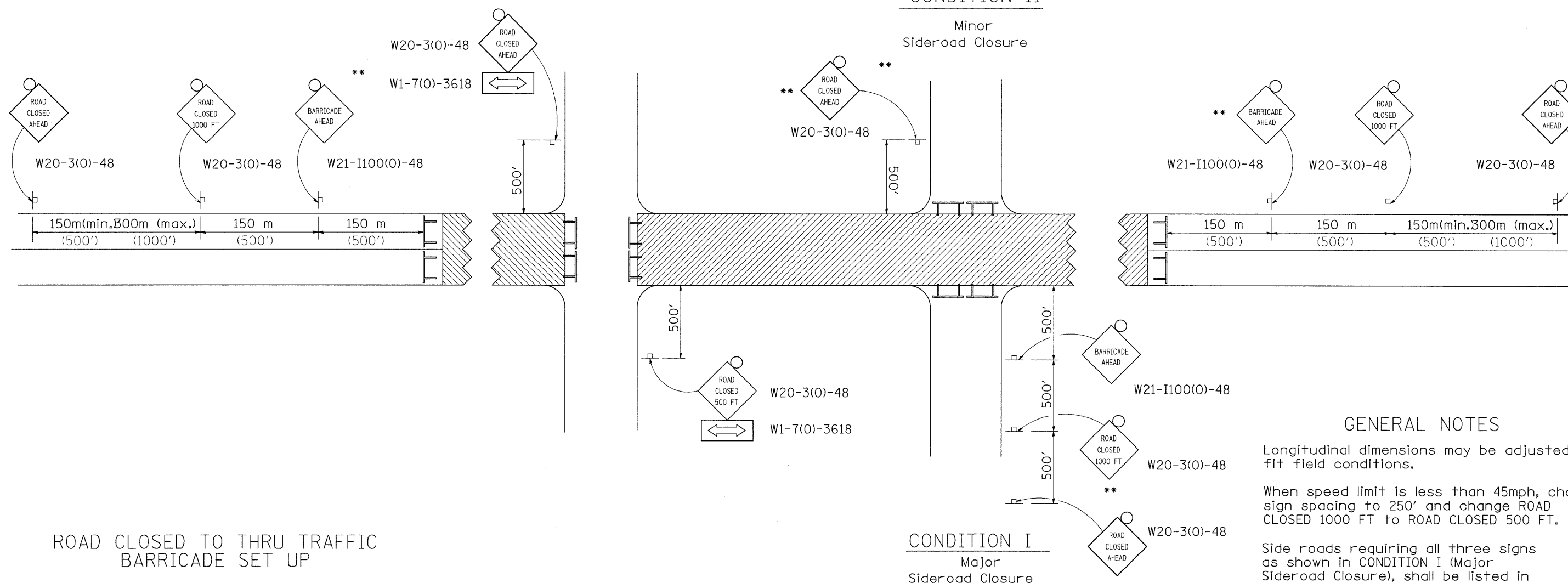


TRAFFIC CONTROL FOR ROAD CLOSURE

CONDITION II

Minor Sideroad Closure



GENERAL NOTES

Longitudinal dimensions may be adjusted to fit field conditions.

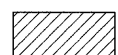
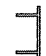
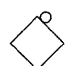
When speed limit is less than 45mph, change sign spacing to 250' and change ROAD CLOSED 1000 FT to ROAD CLOSED 500 FT.

Side roads requiring all three signs as shown in CONDITION I (Major Sideroad Closure), shall be listed in the special provision.

** Where local access is to be maintained, barricades are to be set up as shown in Road Closed to thru traffic. Type III Barricades and R11-2-4830 signs shall be as shown in "Road Closed To All Traffic" detail on Highway Standard 701901.

All dimensions are in millimeters (inches) unless otherwise shown.

SYMBOLS

-  Work area
-  Type III Barricade with Flashers
-  Sign with flashing light

TYPICAL APPLICATION FOR ROAD CLOSURE

FILE NAME =	USER NAME = hensonke	DESIGNED -	REVISED - 1-11-08	STATE OF ILLINOIS DEPARTMENT OF TRANSPORTATION	REGION 2 / DISTRICT 2 STANDARD	F.A.P. RTE.	SECTION	COUNTY	TOTAL SHEETS	SHEET NO.
ct:\pw_work\FWIDOT\HENSONKE\dms34455\d11506apl.dgn	DRAWN -	REVISED -	611			103T-2	HENRY	35	25	
PLOT SCALE = 600.0012 in / IN.	CHECKED -	REVISED -	CONTRACT NO. 64C66							
PLOT DATE = Tue Dec 02 13:57:27 2008	DATE -	REVISED -	ILLINOIS FED. AID PROJECT							
				SCALE:	SHEET NO. OF SHEETS STA. TO STA.					