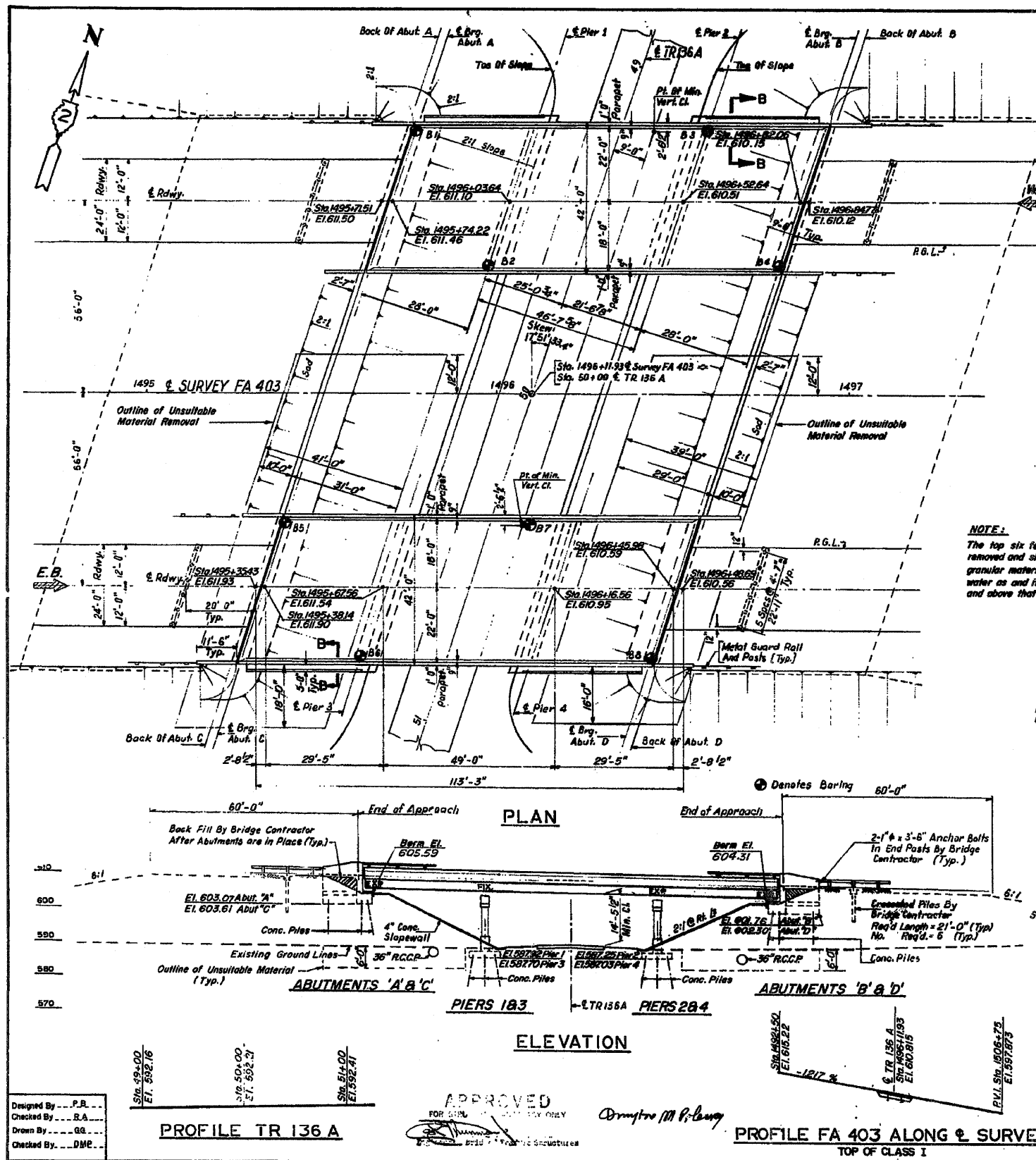


FOR INFORMATION ONLY

STATE	ROUTE	SECTION	COUNTY	TOTAL SHEETS	SHEET NO.
ILL.	195	1-2	WHITESIDE	230	109
F.A. 403					
FED. ROAD DIST. NO. 7	ILLINOIS	FED. AID PROJECT			



GENERAL NOTES

ALL REINFORCEMENT BARS SHALL BE LAPPED 24 DIAMETERS UNLESS OTHERWISE SHOWN. FIELD CONNECTIONS SHALL BE BOLTED USING HIGH STRENGTH BOLTS. BOLTS 3/4" ϕ , UNLESS OTHERWISE NOTED.

FIELD WELDING OF CONSTRUCTION ACCESSORIES WILL NOT BE PERMITTED IN THE BOTTOM OF FLANGE OF BEAMS OR GIRDS NOR ON THE TOP FLANGE FOR A DISTANCE EQUAL TO ONE-FIFTH THE SPAN LENGTH EACH WAY FROM THE PIER SUPPORTS. FIELD WELDING IN OTHER AREAS WILL BE PERMITTED ONLY WHEN APPROVED BY THE ENGINEER.

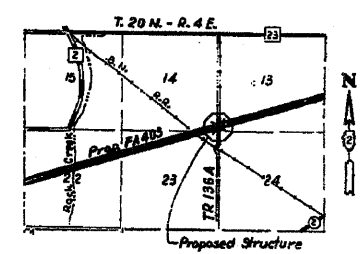
ANCHOR BOLTS SHALL BE SET BEFORE BOLTING DIAPHRAGMS OVER SUPPORTS.

SLOPE WALL SHALL BE REINFORCED WITH WELDED WIRE FABRIC 6" x 6" MESH, WEIGHING 300 PER 100 SQ. FT.

THE EMBANKMENT CONFIGURATION SHOWN SHALL BE THE MINIMUM EMBANKMENT THAT MUST BE CONSTRUCTED PRIOR TO CONSTRUCTION OF THE ABUTMENTS.

THE CONTRACTOR SHALL DRIVE 9 CONCRETE TEST PILES IN A PERMANENT LOCATION, ONE EACH AT THE PIERS AS DIRECTED BY THE ENGINEER BEFORE ORDERING THE REMAINDER OF THE PILES.

THE BASIC LEAD SILICO CHROMATE PAINT SYSTEM SHALL BE USED FOR SHOP AND FIELD PAINTING OF STRUCTURAL STEEL.



LOCATION MAP

TOTAL BILL OF MATERIAL

ITEM	UNIT	SUPER STRUCT.	SUB STRUCT.	TOTAL
STRUCTURE EXCAVATION	CU. YDS.	-	231	231
PROTECTIVE COAT	SQ. YDS.	200	-	200
CLASS "II" CONCRETE	CU. YDS.	200.3	902.0	671.3
STRUCTURAL STEEL	L. SH.	0.16	-	0.16
ALUMINUM BAILING	LIN. FT.	430	-	430
REINFORCEMENT BARS	LIN.	99,999	30,000	130,000
GRAVELLY TINDER PILES (20.1' TO 20")	LIN. FT.	-	304	304
CONCRETE PILES	LIN. FT.	-	1793	1793
TEST PILES (CONCRETE)	EACH	-	4	4
NAME PLATES	EACH	-	2	2
SLOPE WALLS (6")	SQ. YDS.	-	1601	1601
BIT. CONC. SURFACE COURSE CL-1	YARD	00	-	00
PREPARED JT. SEALER 21"	SQ. YDS.	340	-	340
PREPARED JT. SEALER 21"	LIN. FT.	176	-	176
MINIMUM 2.0 DIAMETER REINFORCING BARS	CU. YDS.	-	2010	2010
FORM GRANULAR EMBANKMENT	CU. YDS.	-	2010	2010
PERMANENT BENCH MARK, TYPE I	EACH	1	-	1

* CALCULATED WEIGHT OF STRUCTURAL STEEL = 100,320

DESIGN NOTES

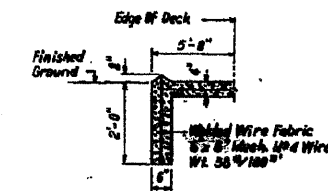
DESIGN LOADING:
HS 20-44 And Allowance for 25 RS.E
Future Wearing Surface

DESIGN STRESSES:
f_c = 1400 P.S.I. Except As Follows:
f_c = 1200 P.S.I. For Deck Slab.
f_c = 1000 P.S.I. For Concrete in Contact With Earth.
f_s = 20,000 P.S.I. - 11.18 Structural Steel.
f_s = 28,000 P.S.I. - Reinforcement Steel.
v = 75 P.S.I. Allowable Shear in Bearings
n = 10
Allowable Live Load Deflection =
L/1000 (Non Composite)
DESIGN SPECIFICATIONS: AASHTO 1969 As Applicable

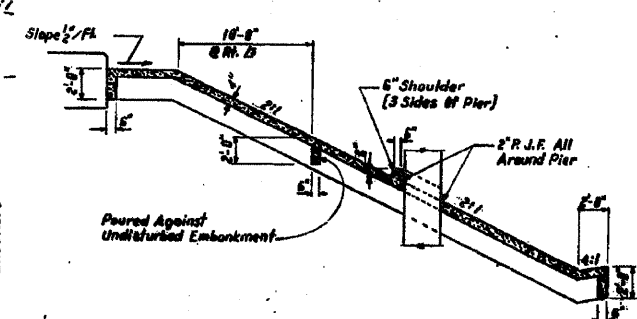
STATION 1496+11.93
BUILT BY
STATE OF ILLINOIS
F.A. 403 SECTION 195-1HB-5
F.A. PROJECT NUMBER 195-1HB-5
LOADING HS 20

NAME PLATE

SEE STD. 2113



SECTION B-B



TYPICAL SECTION THRU SLOPE WALL

For footing layout see sheet #16.

098-0063.4
GENERAL PLAN & ELEVATION
FA 403 SECTION 195-1HB-5
FA 403 OVER TR 136-A
WHITESIDE COUNTY
STATION 1496+11.93

Designed By: P.R.
Checked By: R.A.
Drawn By: G.G.
Checked By: D.M.C.

APPROVED
FOR USE BY THE STATE OF ILLINOIS
Doris M. P. Long

PROFILE TR 136 A
PROFILE FA 403 ALONG & SURVEY
TOP OF CLASS I

* FAI Route 88 & FAP Route 309 (I-88 & US 30)
** D2 Bridge Painting 2009-2

FILE NAME = P:\PAINTING\64663\PLAN\eng.dgn	USER NAME = linkj	DESIGNED -	REVISED -	STATE OF ILLINOIS DEPARTMENT OF TRANSPORTATION	SCALE: SHEET NO. OF SHEETS STA. TO STA.	F.A. RTE. SECTION COUNTY TOTAL SHEETS SHEET NO.	F.A. 403 195-1HB-5 Whiteside 29 16	CONTRACT NO. 64E63
PLOT SCALE = 5/8" = 1' IN.	CHECKED -	REVISED -						
PLOT DATE = Fri Dec 05 14:27:58 2008	DATE -	REVISED -						