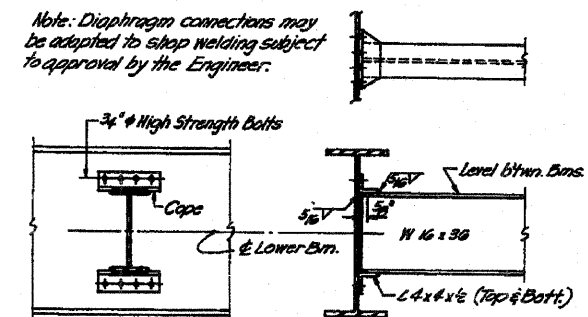
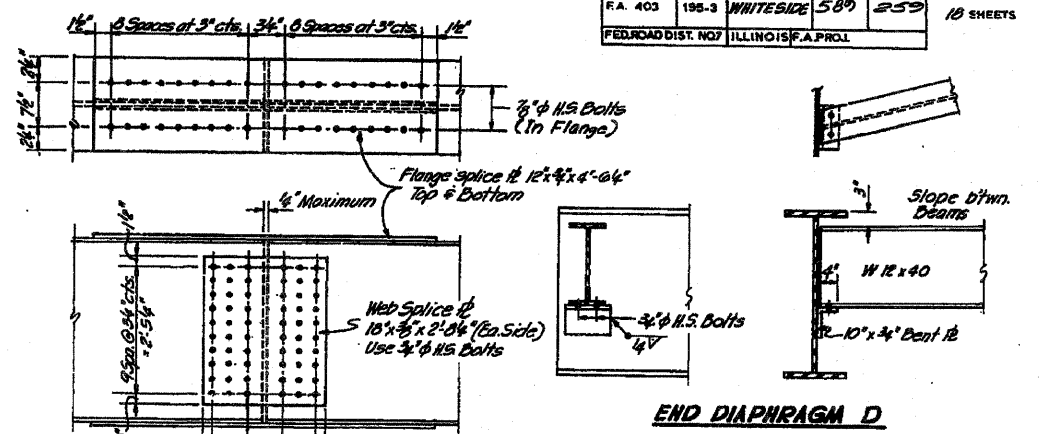
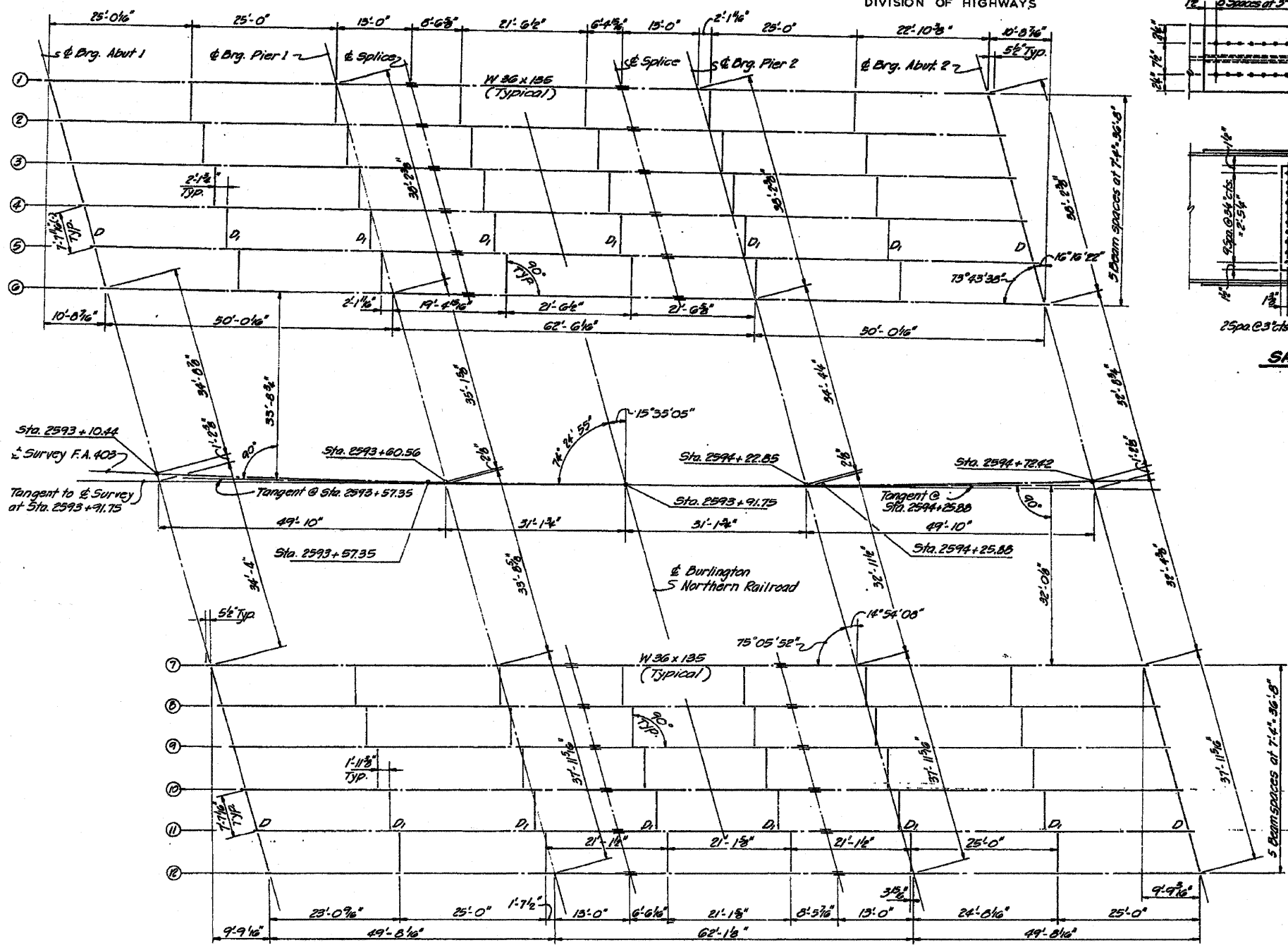


# FOR INFORMATION ONLY

STATE OF ILLINOIS  
DIVISION OF HIGHWAYS

ROUTE NO.	SEC.	COUNTY	TOTAL SHEETS	SHEET NO.	OF
F.A. 403	195-3	WHITESIDE	589	259	10 SHEETS
FED. ROAD DIST. NO.	ILLINOIS F.A. PROJ.				



**\* TOP OF FLANGE ELEVATIONS**

Westbound Bridge						
	Bm. 1	Bm. 2	Bm. 3	Bm. 4	Bm. 5	Bm. 6
& Drg. W. Abut.	680.769	681.171	681.613	682.054	682.496	682.938
& Drg. Pier 1	682.761	681.223	681.644	682.085	682.526	682.968
& Splice 1	680.769	681.211	681.652	682.093	682.534	682.976
& Splice 2	680.766	681.227	681.668	682.109	682.549	682.990
& Drg. Pier 2	680.769	681.220	681.671	682.111	682.552	682.993
& Drg. E. Abut.	680.801	681.242	681.682	682.123	682.564	683.006

Eastbound Bridge						
	Bm. 7	Bm. 8	Bm. 9	Bm. 10	Bm. 11	Bm. 12
& Drg. W. Abut.	682.462	682.902	683.343	683.784	684.225	684.666
& Drg. Pier 1	682.462	682.903	683.344	683.785	684.226	684.667
& Splice 1	682.462	682.903	683.344	683.785	684.226	684.667
& Splice 2	682.462	682.907	683.348	683.789	684.230	684.671
& Pier 2	682.458	682.896	683.339	683.778	684.216	684.657
& Drg. E. Abut.	682.449	682.891	683.330	683.770	684.210	684.651

\* For Fabrication only.

**FRAMING PLAN**

DESIGNED	J.P.	EXAMINED	
CHECKED	A.K.C.	PASSED	
DRAWN	L.B.K.	APPROVED	
CHECKED	S.M. Knight		

**STRUCTURAL STEEL**  
F.A. RTE. 403 - SEC. 195-3VB  
WHITESIDE COUNTY  
STATION 2593 + 91.75

\* FAI Route 88 & FAP Route 509 (I-88 & US 50)  
\*\* D2 Bridge Painting 2009-2  
098-0089, 90