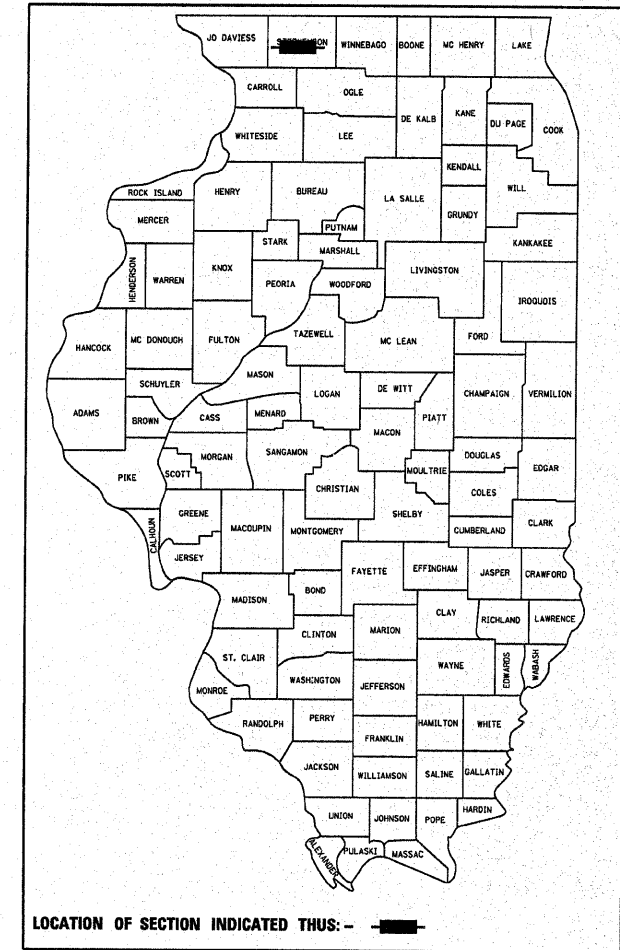


F.A.P. RTE.	SECTION	COUNTY	TOTAL SHEETS	SHEET NO.
301	(21VB)M	Stephenson	5	1
FED. ROAD DIST. NO.	ILLINOIS	CONTRACT NO. 64E66		

D-92-014-09

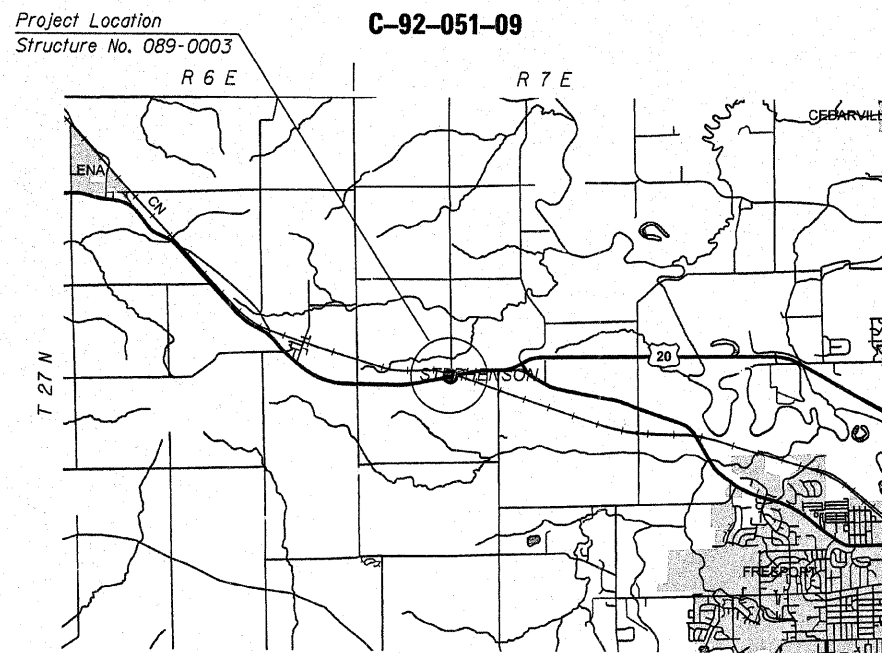


STATE OF ILLINOIS
DEPARTMENT OF TRANSPORTATION
DIVISION OF HIGHWAYS

**PROPOSED
HIGHWAY PLANS**

FAP ROUTE 301 (US 20)
SECTION (21VB)M

BRIDGE REPAIR
STEPHENSON COUNTY



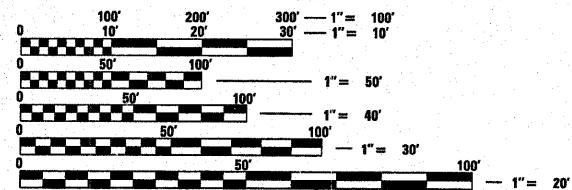
C-92-051-09

INDEX OF SHEETS

1. Cover Sheet, Index of Sheets, Standards
2. Summary of Quantities
3. General Notes
4. Plan & Elevation
5. Repair Details

STANDARDS

- 701001-02
- 701006-03
- 701201-03
- 701301-03
- 701901-01



FULL SIZE PLANS HAVE BEEN PREPARED USING STANDARD ENGINEERING SCALES. REDUCED SIZED PLANS WILL NOT CONFORM TO STANDARD SCALES. IN MAKING MEASUREMENTS ON REDUCED PLANS, THE ABOVE SCALES MAY BE USED.

J.U.L.I.E.
JOINT UTILITY LOCATION INFORMATION FOR EXCAVATION
1-800-892-0123
OR 811

PROJECT ENGINEER: Mahmoud Etemadi 815/284-5393

GROSS LENGTH = 264 FT. = 0.05 MILE
NET LENGTH = 264 FT. = 0.05 MILE

CONTRACT NO. 64E66

STATE OF ILLINOIS
DEPARTMENT OF TRANSPORTATION
DIVISION OF HIGHWAYS

SUBMITTED December 5, 2008
George F. Ryan
DEPUTY DIRECTOR OF HIGHWAYS, REGION ENGINEER

January 30, 2009
Charles J. Ingersoll
ENGINEER OF DESIGN AND ENVIRONMENT

January 30, 2009
Christina M. Reed
DIRECTOR OF HIGHWAYS, CHIEF ENGINEER

**PRINTED BY THE AUTHORITY
OF THE STATE OF ILLINOIS**

SUMMARY OF QUANTITIES

<i>paycode</i>	<i>pay item</i>	<i>units</i>	<i>quantity</i>
			100% STATE
			X171-5B
50500405	FURNISHING AND ERECTING STRUCTURAL STEEL	POUND	20,910
67100100	MOBILIZATION	L SUM	1
70100450	TRAFFIC CONTROL AND PROTECTION, STANDARD 701201	L SUM	1
Z0048665	RAILROAD PROTECTIVE LIABILITY INSURANCE	L SUM	1

All Borrow/Waste/Use sites must be approved by the Department prior to removing any material from the project or initiating any earthmoving activities, including temporary stockpiling outside the limits of construction.

The Contractor shall seed all disturbed areas within the project limits. Seeding Class 4 or 2A shall be used, except in front of properties where the grass will be mowed, then use Seeding, Class 1. Class 2A shall be used on front slopes and ditch bottoms. Class 4 shall be used behind Type A gutter, on all backslopes and areas behind the backslope, and beyond the toe of front slope on fill sections without ditches. This work will be included in the contract unit price per Lump Sum for Mobilization.

Fertilizer shall be applied to all disturbed areas and incorporated into the seedbed prior to seeding or placement of sod at the rate specified in Sections 250 and 252 of the Standard Specifications. This work shall be included in the cost of MOBILIZATION.

Mulch Method II shall be applied over all seeded areas. This shall be included in the cost of the MOBILIZATION.

This structure will retain the same number 089-0003.

The Contractor shall be responsible for protecting utility property during construction operations as outlined in Article 107.31 of the Standard Specifications. A minimum of 48 hours advance notice is required for non-emergency work. The JULIE number is 800-892-0123. The following listed utilities located within the project limits or immediately adjacent to the project construction limits are members of JULIE:

Commonwealth Edison Company
Verizon

FILE NAME =	USER NAME = lirkdj	DESIGNED -	REVISED -	STATE OF ILLINOIS DEPARTMENT OF TRANSPORTATION	General Notes	F.A.P. RTE.	SECTION	COUNTY	TOTAL SHEETS	SHEET NO.
G:\BR\CADD plans\Stephenson County\089\003\0890003.dgn	DRAWN -	REVISED -	301			(21VB)M	Stephenson	5	3	
PLOT SCALE = 50.0000' / IN.	CHECKED -	REVISED -	CONTRACT NO. 64E66							
PLOT DATE = Thu Dec 04 08:31:14 2008	DATE -	REVISED -	FED. ROAD DIST. NO. - ILLINOIS FED. AID PROJECT							
SCALE: _____ SHEET NO. ___ OF ___ SHEETS STA. _____ TO STA. _____										

STATE OF ILLINOIS
DEPARTMENT OF TRANSPORTATION

** Contractor is to verify beam length prior to ordering material. Other sections meeting the section modulus requirements shown may be allowed subject to approval by the Bureau of Bridges and Structures. Maximum Girder depth = 30". No additional payment will be allowed if the contractor chooses a heavier steel section than the one specified in the plans. (Min. $S_x = 323 \text{ in}^3$)

GENERAL NOTES

All structural steel shall conform to AASHTO Classification M-270 Gr. 36, unless otherwise noted.

Plan dimensions and details relative to existing plans are subject to routine variations. The Contractor shall field verify existing dimensions and details affecting new construction and make necessary approved adjustments prior to construction or ordering of materials. Such variations shall not be cause for additional compensation for a change in scope of the work, however, the Contractor will be paid for the quantity actually furnished based upon the unit price bid for the work.

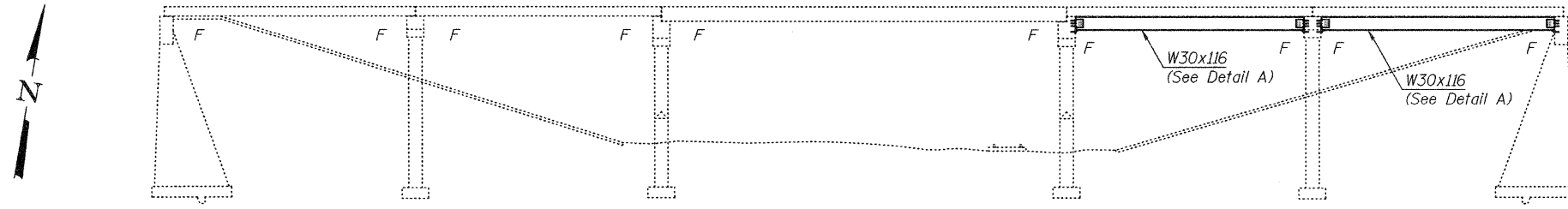
The contractor is advised that the existing PPC Deck Beams are in a deteriorated condition with reduced load carrying capacity. It is the contractor's responsibility to account for the condition of the beams when developing construction procedures.

See Section 584 of the Standard Specifications for Epoxy Grouting of Threaded Rods; Minimum embedment 9".

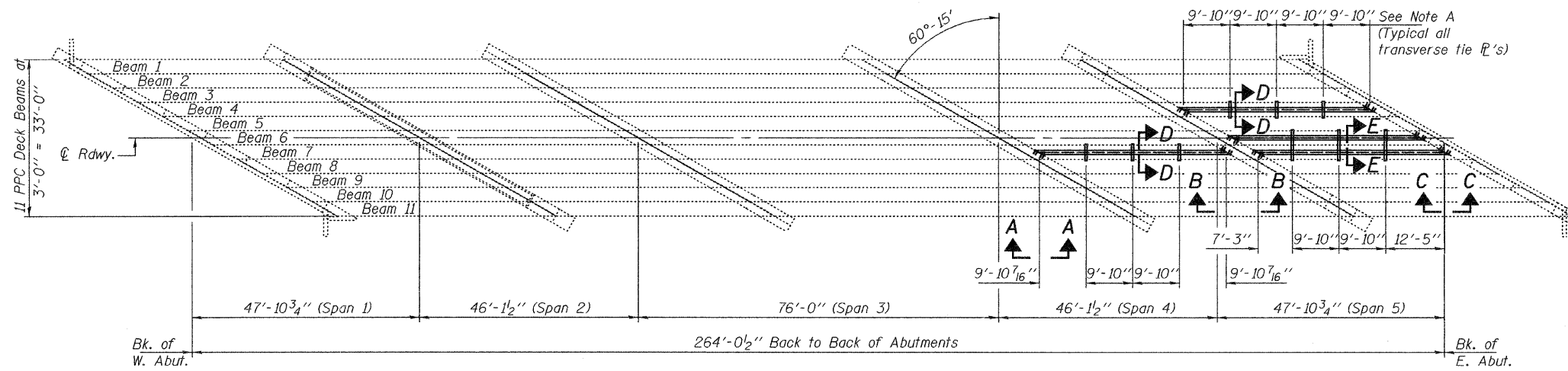
If the contractor's procedure for placement of beams involves placement of cranes or other heavy equipment on the bridge, a detailed procedure shall be submitted to the Engineer for approval. The procedure shall include calculations, prepared and sealed by an Illinois Licensed Structural Engineer, verifying that the equipment and procedure used will not overstress the existing beams. To distribute load to multiple beams and protect the existing surface, in all cases a double layer mat of heavy timbers shall be used at all times under crane tracks or wheels and any outriggers in the down position. If necessary, shims shall be used under the crane mat to ensure uniform contact with the underlying beams.

The cost of epoxy grouting threaded rods on the pier cap, abutments and beams shall be included with Furnishing and Erecting Structural Steel.

The Contractor has the option of using used steel. See Special Provisions.

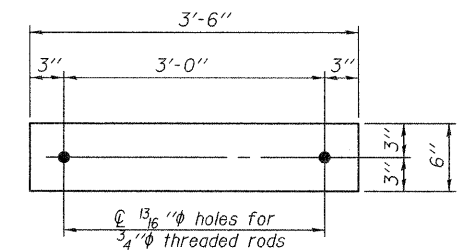


ELEVATION

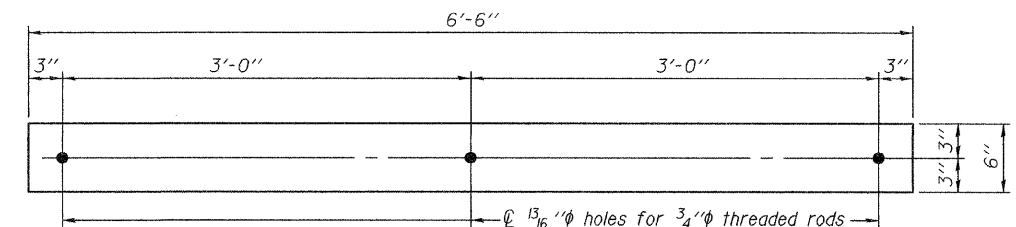


PLAN

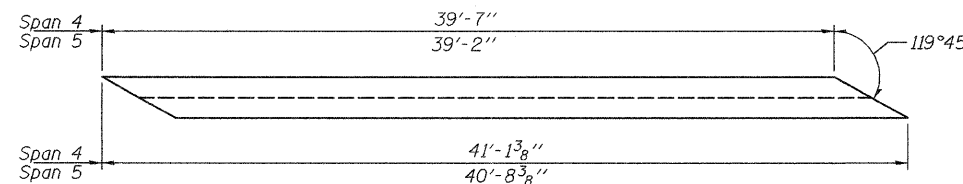
Note A:
 ☉ Transverse tie \bar{r} 's (3 per span). Place additional shims at midpoints between tie \bar{r} 's. Securely weld shims to top flange of support beam. Minimum shim size is 6" x flange width.



TRANSVERSE TIE \bar{r} A
 \bar{r} 1/2" x 6" x 3'-6"
 (6 Required)



TRANSVERSE TIE \bar{r} B
 \bar{r} 1/2" x 6" x 6'-6"
 (3 Required)



DETAIL A

TOTAL BILL OF MATERIAL

ITEM	UNIT	QUANTITY
Furnishing and Erecting Structural Steel	Pound	20,910

**PLAN & ELEVATION
 U.S. 20 OVER CANADIAN NATIONAL
 ILLINOIS CENTRAL RAILROAD
 SN 089-0003**

DESIGNED	<i>[Signature]</i>
CHECKED	Victor H. Veliz
DRAWN	Kyle M. Steffen
CHECKED	<i>[Signature]</i> VHV

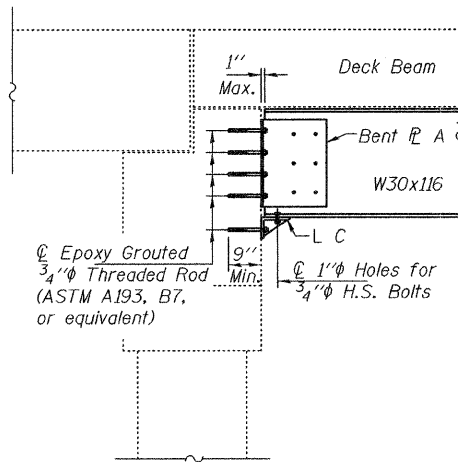
JANUARY 13, 2009
 EXAMINED *[Signature]*
 ENGINEER OF STRUCTURAL SERVICES
 PASSED *[Signature]*
 ENGINEER OF BRIDGES AND STRUCTURES



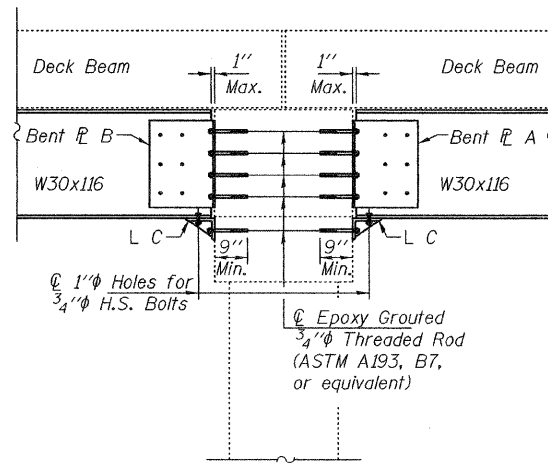
Expires: November 30, 2010

SHEET NO. 1	F.A.P. RTE. 301	SECTION (21VB)M	COUNTY STEPHENSON	TOTAL SHEETS 5	SHEET NO. 4
2 SHEETS		CONTRACT NO. 64E66			
FED. ROAD DIST. NO.		ILLINOIS FED. AID PROJECT			

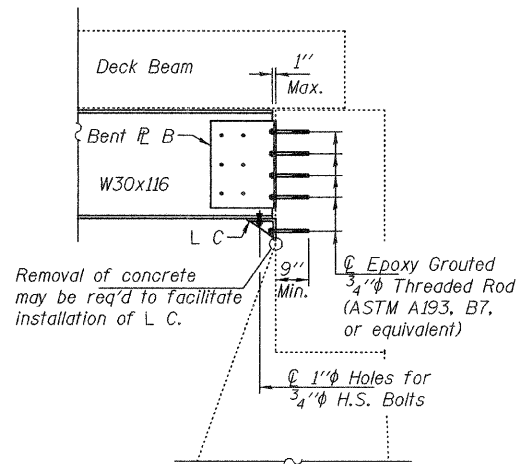
STATE OF ILLINOIS
DEPARTMENT OF TRANSPORTATION



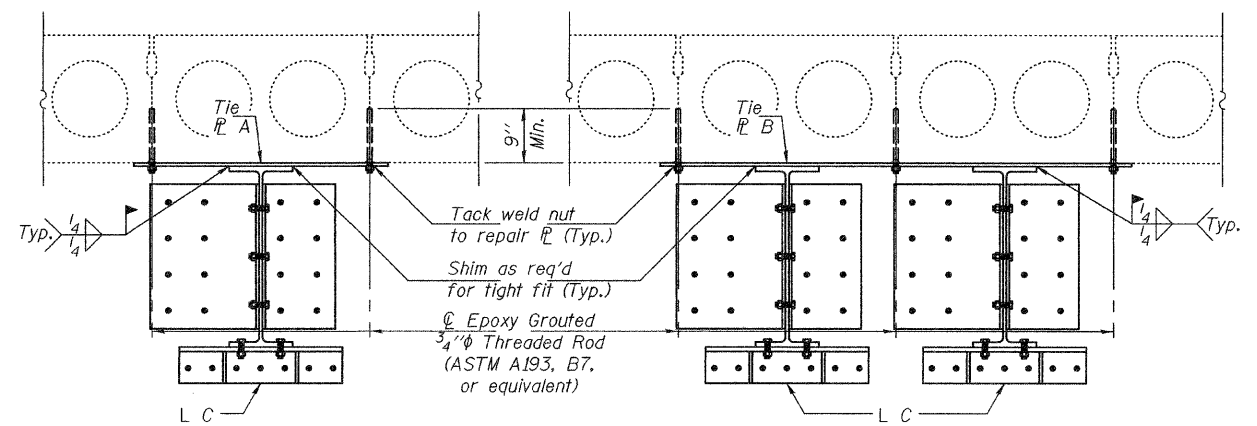
SECTION A-A



SECTION B-B

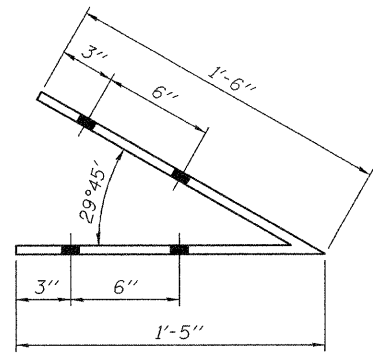


SECTION C-C



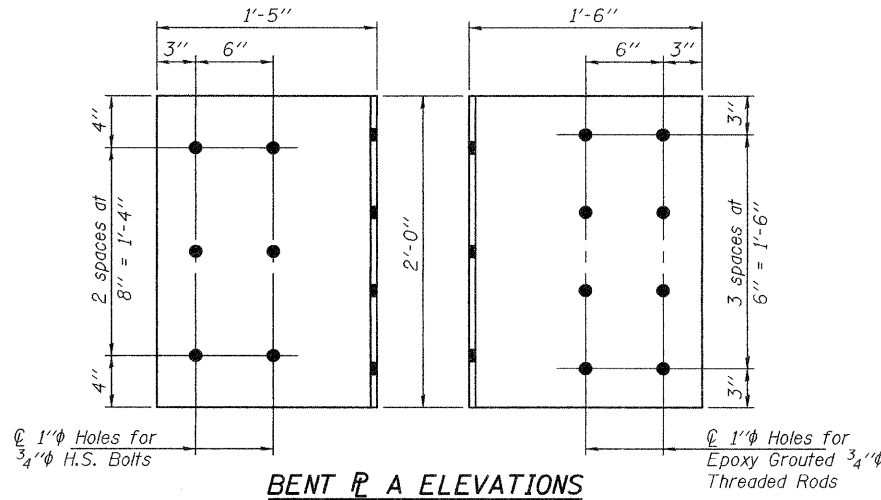
SECTION D-D

SECTION E-E

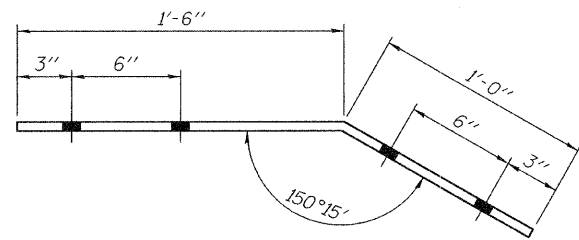


BENT PLATE A

1/2" x 2'-11" x 2'-0"
(8 Required)

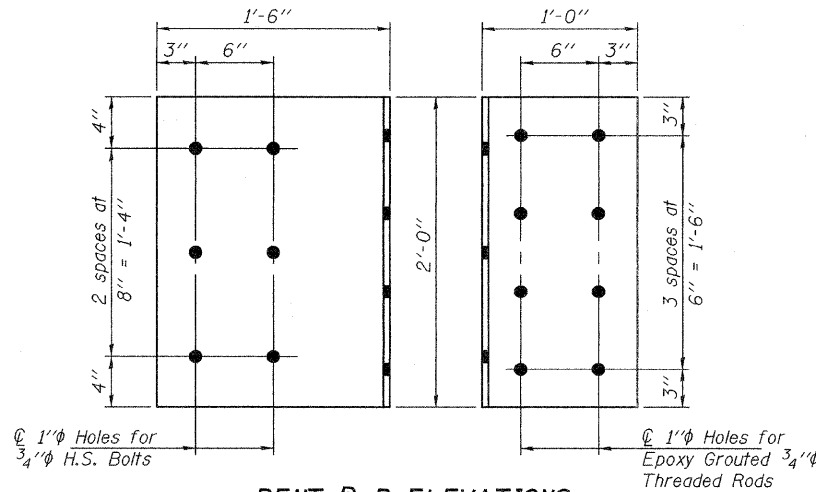


BENT PLATE A ELEVATIONS

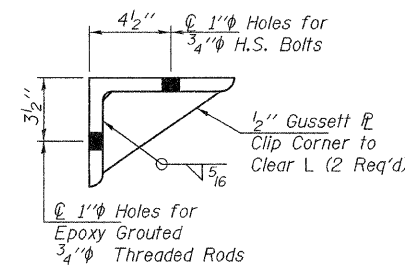


BENT PLATE B

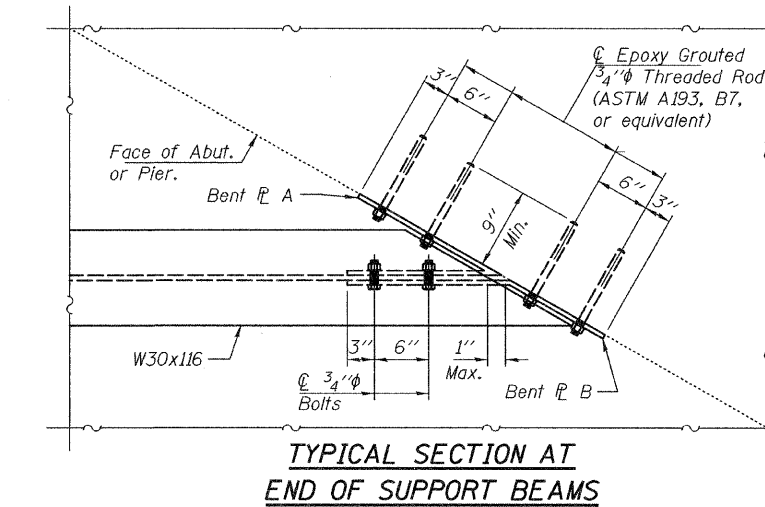
1/2" x 2'-6" x 2'-0"
(8 Required)



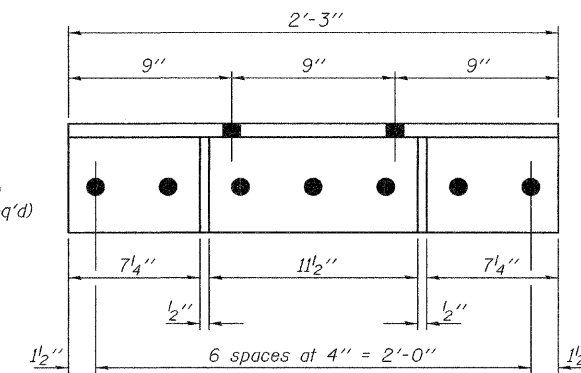
BENT PLATE B ELEVATIONS



SECTION THRU L.C.



TYPICAL SECTION AT
END OF SUPPORT BEAMS



L.C.

L 8 x 6 x 3/4 x 2'-3"
(8 Required)

REPAIR DETAILS
U.S. 20 OVER CANADIAN NATIONAL
ILLINOIS CENTRAL RAILROAD
SN 089-0003

DESIGNED	GGE
CHECKED	VHV
DRAWN	Kyle M. Steffen
CHECKED	GGE VHV

JANUARY 13, 2009
EXAMINED *A. Carl Hoyer*
ENGINEER OF STRUCTURAL SERVICES
PASSED *Ralph E. Anderson*
ENGINEER OF BRIDGES AND STRUCTURES

SHEET NO. 2 2 SHEETS	F.A.P. RTE.	SECTION	COUNTY	TOTAL SHEETS	SHEET NO.
	301	(21VB)M	STEPHENSON	5	5
FED. ROAD DIST. NO.			ILLINOIS FED. AID PROJECT		
CONTRACT NO. 64E66					