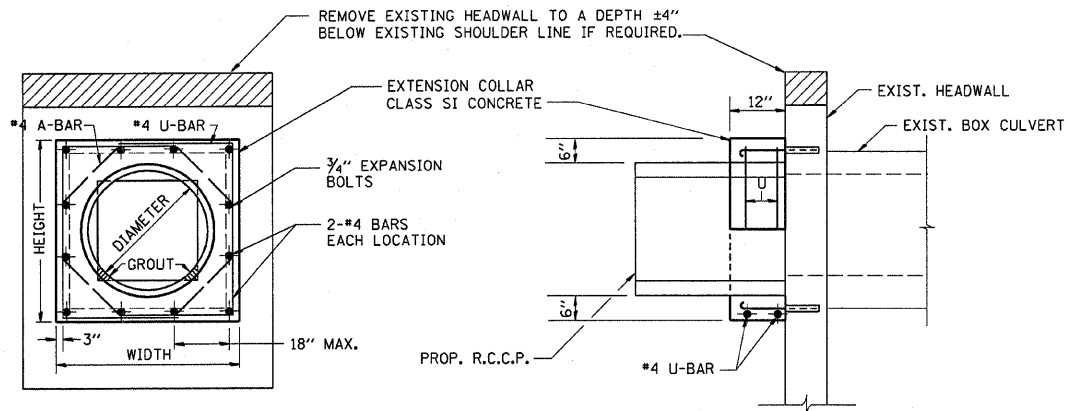


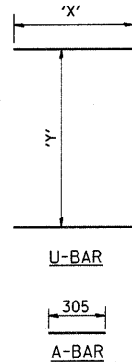
F.A. RTE.	SECTION	COUNTY	TOTAL SHEETS	SHEET NO.
840		IBOQUOIS	16	12
STA.	TO STA.			
FED. ROAD DIST. NO.	ILLINOIS	FED. AID PROJECT		

*(123)RS-1 & (135)RS-2



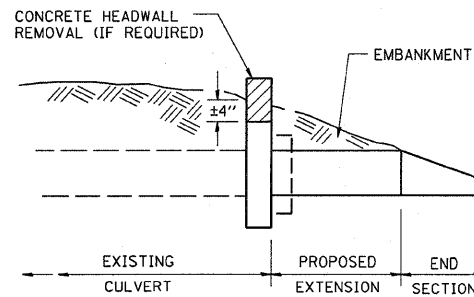
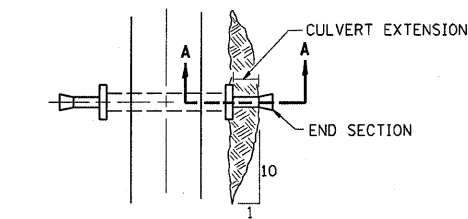
EXPANSION BOLTS SHALL CONSIST OF SELF DRILLING EXPANSION SHIELDS AND 3/4" DIA. HOOKED BOLTS. HOOKED BOLTS SHALL EXTEND A MINIMUM OF 9" INTO NEW CONCRETE. BOLTS SHALL BE DRILLED IN THE CENTER OF THE EXISTING BOX CULVERT BARREL WALLS. MINIMUM CERTIFIED PROOF LOAD = 4,080 LBS.

LOCATION	EXISTING CULVERT SIZE FT. x FT.	PIPE DIMENSION DIA. IN.	PIPE AREA SQ. FT.	EXTENSION COLLAR		A-BAR		U-BAR		CLASS SI CONC. COLLAR CU. YD.	REINFORCEMENT BARS POUND	3/4" DIA. EXPANSION BOLTS EACH
				WIDTH IN.	HEIGHT IN.	305 IN.	'X' IN.	'Y' IN.	IN.			
358+18	3 X 2	6.0	56	44	33	38	0.27	23	14			



COLLAR DETAIL (R.C.C.P. EXTENSION OF BOX CULVERT)

540-9

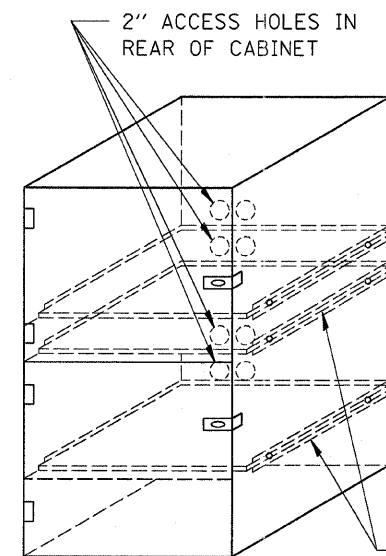
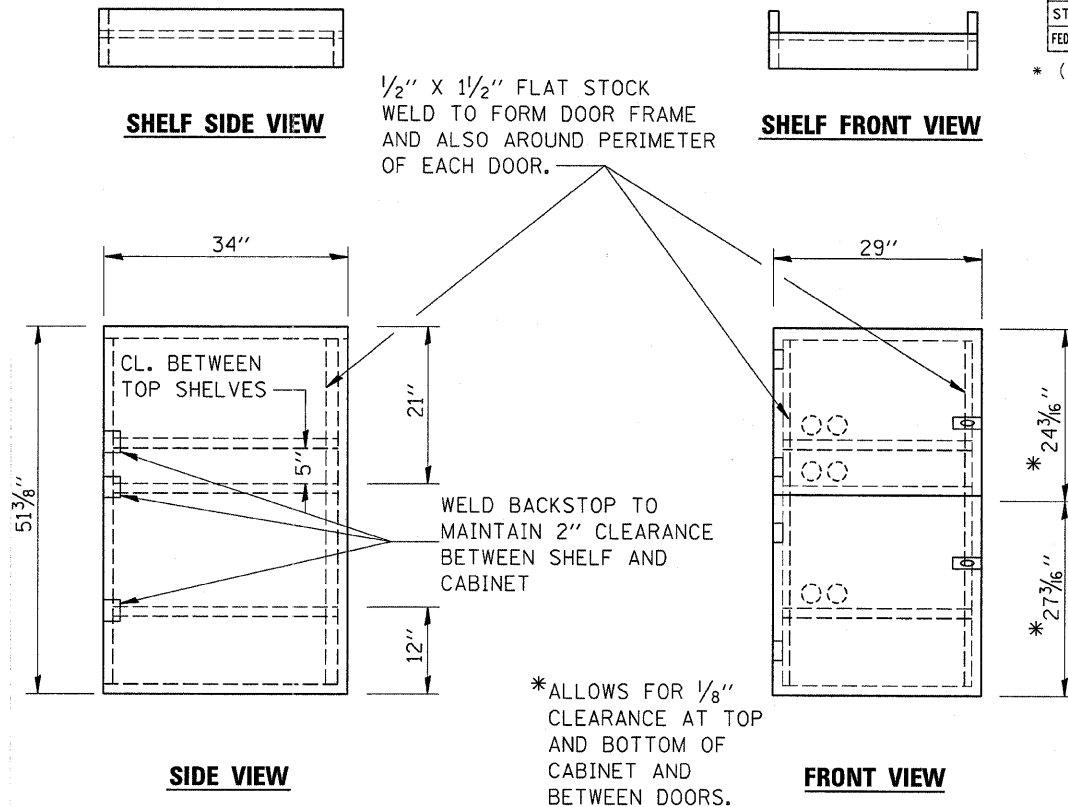


SECTION A-A

PLAN AT CULVERT EXTENSIONS

540-13

CONTRACT NO. 66425



FLAT STOCK DIMENSIONS VARY DEPENDING ON TYPE OF ROLLER ASSEMBLY.

- NOTES:
1. USE 16 GAUGE STEEL FOR CABINET.
 2. THE TOP SHELF SHALL SLIDE IN OR OUT WITH THE TOP DOOR OPEN.
 3. ALL HINGES AND HASPS WILL BE WELDED TO THE CABINET.
 4. ALL EDGES SHALL BE GROUND SMOOTH.
 5. TWO (2" DIA.) ACCESS HOLES WILL BE REQUIRED FOR EACH SHELF.
 6. CABINET SHALL BE PAINTED WITH TWO COATS OF FLAT PAINT.
 7. 2 EACH MATCHING KEY PADLOCKS, WITH 3 KEYS PROVIDED, MASTER MODEL 3 T OR EQUIVALENT.
 8. 4 EACH PLAIN STEEL, NON-REMOVABLE PIN, NO HOLE 4"X4" SQUARE CORNER HINGES TO BE WELDED ON.
 9. 2 EACH EXTRA HEAVY, PLAIN STEEL, FIXED STAPLE, NO HOLE, 7 1/4 " HASPS TO BE WELDED ON.

LOCKABLE COMPUTER CABINET

670-1

REVISIONS	
NAME	DATE

ILLINOIS DEPARTMENT OF TRANSPORTATION

MISCELLANEOUS DETAILS

SCALE: VERT. HORIZ. DATE

DRAWN BY CHECKED BY