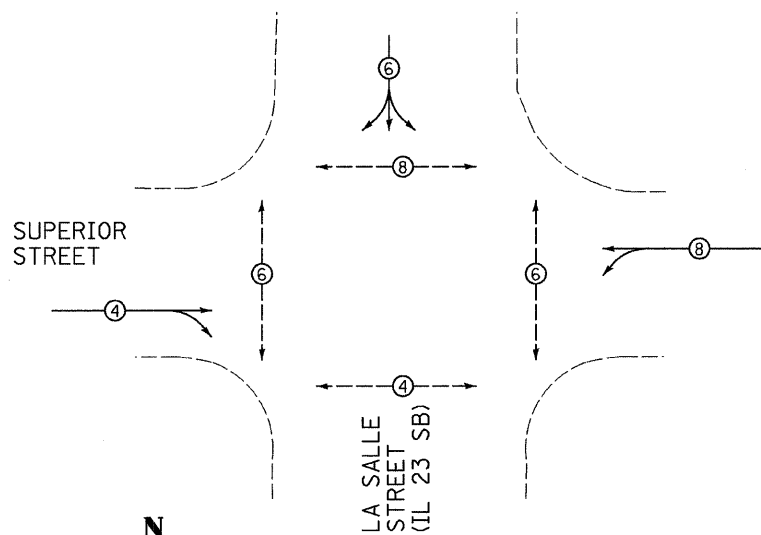


F.A.P. RTE.	SECTION	COUNTY	TOTAL SHEETS	SHEET NO.
*	**	LA SALLE	48	5
STA.		TO STA.		
FED. ROAD DIST. NO. _		ILLINOIS FED. AID PROJECT		
* FAP 68 & 68 ALT (IL 23 NB & SB) ** (35, 51 & 48 CS, 12)TS				

CONTROLLER SEQUENCE

NAME OF INTERSECTION: LA SALLE STREET AND SUPERIOR STREET
 CONTROLLER SPECIFIED: FULL-ACTUATED CONTROLLER, STANDARD SEQUENCE II, 8 PHASE, IN TYPE IV CABINET
 REFERRING TO STANDARD 857001, THE VEHICULAR AND PEDESTRIAN PHASES USED ARE DESIGNATED.



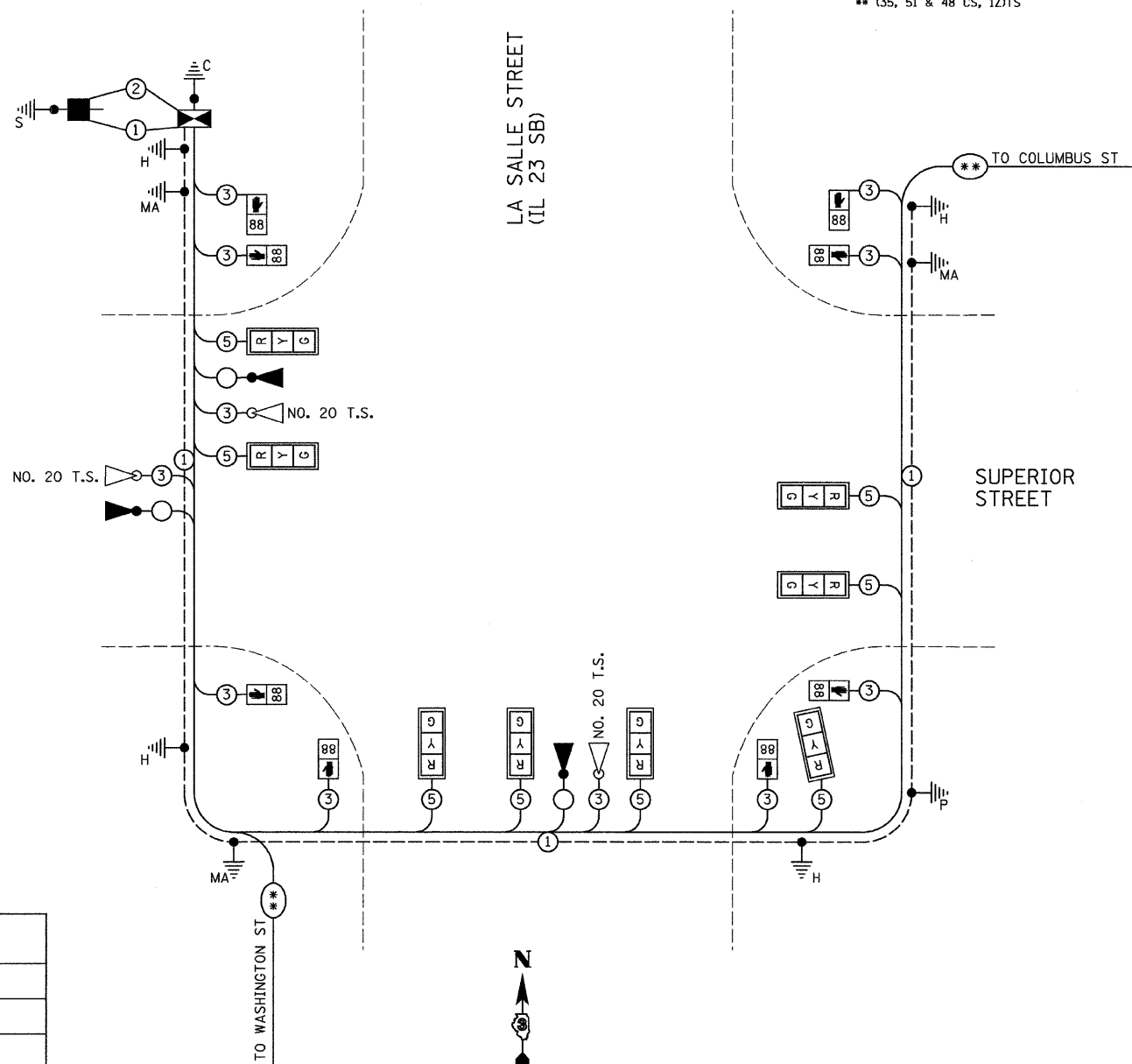
PROPOSED PLAN
NOT TO SCALE

LEGEND

- ← (with circle) → VEHICULAR MOVEMENT
- - - (with circle) - - - PEDESTRIAN MOVEMENT
- * NUMBER REFERS TO ASSOCIATED PHASE

TRAFFIC SIGNALS LEGEND

	DETOTES NUMBER OF CONDUCTORS (NEW) ALL CABLE NO. 14 EXCEPT AS INDICATED
	PROPOSED SERVICE INSTALLATION, TYPE B
	PROPOSED CONTROLLER AND CABINET
	EMERGENCY VEHICLE LIGHT DETECTOR
	EMERGENCY VEHICLE CONFIRMATION BEACON
	SIGNAL SECTION 12"
	PROPOSED INTERCONNECT CABLE
	PROPOSED WALK/DONT WALK COUNTDOWN SECTION
	TRAFFIC SIGNAL BACKPLATE
	GROUND CABLE IN CONDUIT, NO. 6 SOLID COPPER (GREEN)
	GROUND ROD AT POST (P) OR MAST ARM (MA) OR CONTROLLER (C) OR SERVICE INSTALLATION (S) OR HANDHOLE (H)



PROPOSED CABLE PLAN
NOT TO SCALE

REVISIONS	
NAME	DATE

ILLINOIS DEPARTMENT OF TRANSPORTATION
 CABLE PLAN
 FAP 68 ALT (IL 23 SB)/LA SALLE ST
 AND SUPERIOR STREET
 SECTION 35,51 & 48 CS, 12)TS
 LA SALLE COUNTY

SCALE: VERT.
 HORIZ.
 DATE 11/08

DRAWN BY ARR
 CHECKED BY JLS