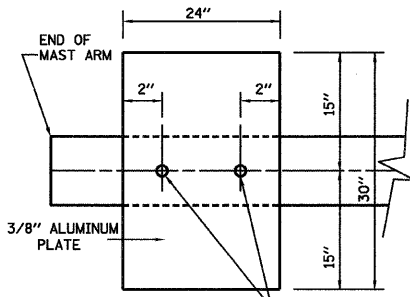


F.A. RTE.	SECTION	COUNTY	TOTAL SHEETS	SHEET NO.
*	**	LA SALLE	48	39
STA.		TO STA.		
FED. ROAD DIST. NO.		ILLINOIS FED. AID PROJECT		
* FAP 68 & 68 ALT (IL 23 NB & SB) ** (35, 51 & 48 CS, 12)TS				

ELECTRICAL LOAD FOR INTERSECTION				
STREET NAME	COMPONENT	NUMBER	WATTAGE EACH	BURNTIME %
COLUMBUS STREET (IL 23 SB)	RED	4	10	42
	YELLOW	4	19	5
	GREEN	4	14	53
		4	7	100
		4	5	53
LAFAYETTE STREET	RED	4	10	68
	YELLOW	4	19	5
	GREEN	4	14	27
		4	7	100
		4	5	27
TRAFFIC SIGNAL CABINET	CONTROLLER	1	6	100
	UPS	1	50	100
	EMERGENCY VEHICLE PREEMPT	3	--	--

NOTE:

DAMPENING DEVICE SHALL CONSIST OF A 24" X 30" TYPE 1, UNPAINTED ALUMINUM SIGN STOCK MOUNTED HORIZONTALLY ON TOP OF MAST ARM WITH THE 30" LENGTH PERPENDICULAR TO THE ARM. COST OF THE DAMPENING DEVICE IS INCLUDED IN THE MAST ARM PAY ITEM.



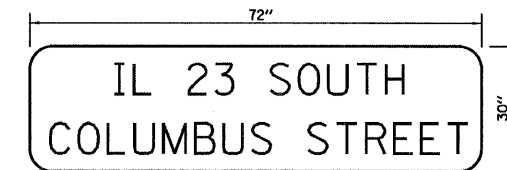
2-5/8" STAINLESS STEEL BOLTS THROUGH STAINLESS STEEL BANDING
 NOTE: MOUNT DAMPENING PLATE TO END OF EACH TRAFFIC SIGNAL MAST ARM.

DAMPENING PLATE DETAIL - TOP VIEW



TYPE ZZ SHEETING REQUIRED
 8" D SERIES LETTERS
 1 SIGNS REQUIRED = 15 SQ. FT. EACH
 = 15 SQ. FT. TOTAL

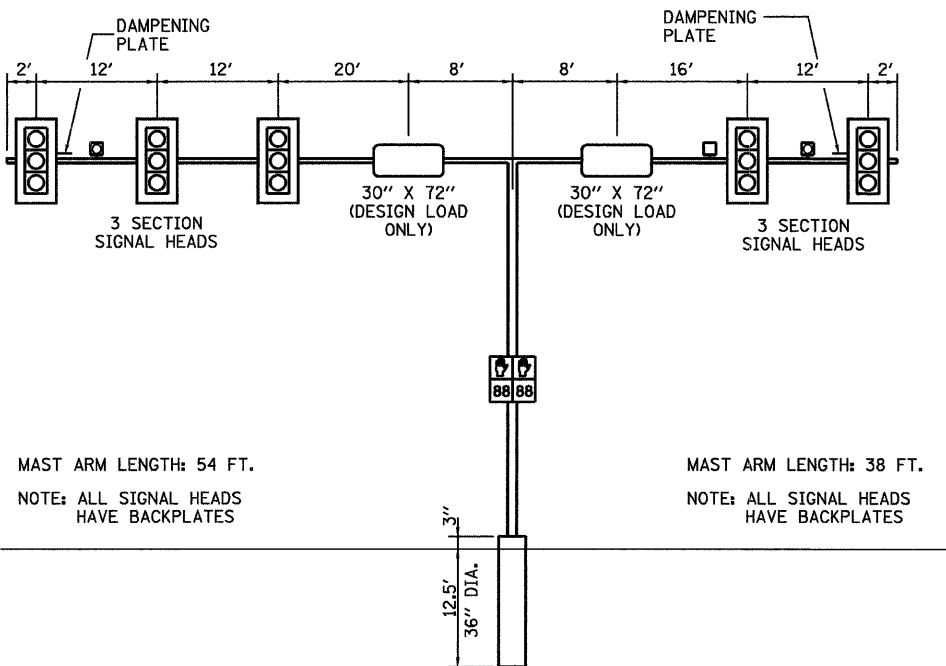
THIS STREET NAME SIGN SHALL BE PLACED ON THE MAST ARMS PARALLEL WITH LAFAYETTE STREET



TYPE ZZ SHEETING REQUIRED
 8" D SERIES LETTERS (STATE ROUTE LETTERING)
 6" D SERIES LETTERS (CITY STREET LETTERING)
 2 SIGNS REQUIRED = 15 SQ. FT. EACH
 = 30 SQ. FT. TOTAL

THIS STREET NAME SIGN SHALL BE PLACED ON THE MAST ARMS PARALLEL WITH COLUMBUS STREET

AGENCY RESPONSIBLE FOR TRAFFIC SIGNAL ENERGY CHARGES:
 CITY OF OTTAWA

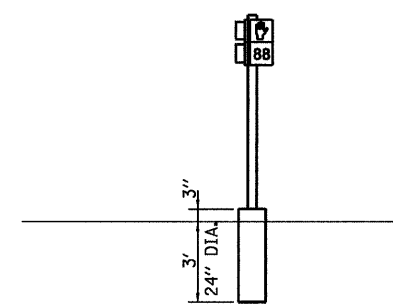


MAST ARM LENGTH: 54 FT.
 NOTE: ALL SIGNAL HEADS HAVE BACKPLATES

MAST ARM LENGTH: 38 FT.
 NOTE: ALL SIGNAL HEADS HAVE BACKPLATES

NORTHBOUND **WESTBOUND**

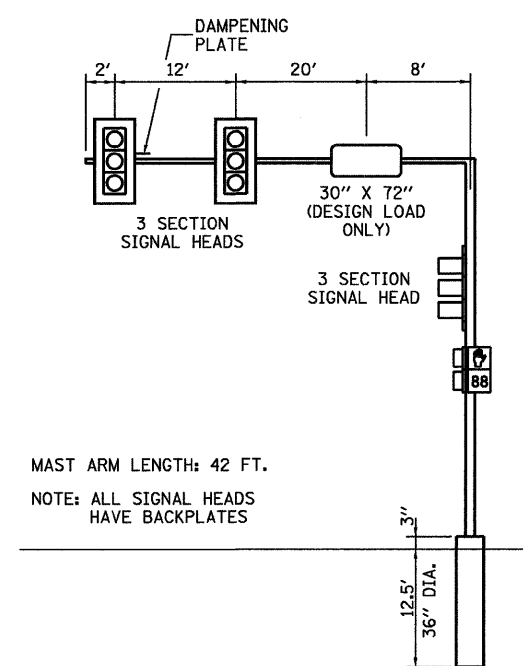
NORTHEAST CORNER
 NOT TO SCALE



MAST ARM LENGTH: 42 FT.
 NOTE: ALL SIGNAL HEADS HAVE BACKPLATES

EASTBOUND

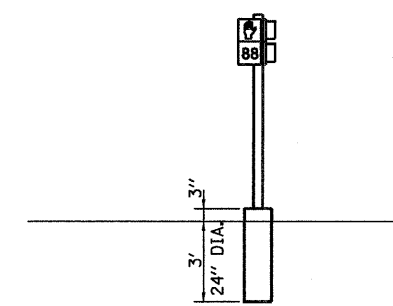
SOUTHEAST CORNER
 NOT TO SCALE



MAST ARM LENGTH: 42 FT.
 NOTE: ALL SIGNAL HEADS HAVE BACKPLATES

WESTBOUND

NORTHWEST CORNER
 NOT TO SCALE



MAST ARM LENGTH: 42 FT.
 NOTE: ALL SIGNAL HEADS HAVE BACKPLATES

WESTBOUND

SOUTHWEST CORNER
 NOT TO SCALE

COLUMBUS STREET (IL 23 NB) / LAFAYETTE STREET

MAST ARM AND POLE SHALL BE DESIGNED FOR THE WORST CASE LOADING CONDITION WHEREBY ALL THE SIGNAL HEADS ARE LOCATED 2 FEET FURTHER OUT THAN POSITION SHOWN. HOWEVER THE INTENT IS THAT ALL SIGNAL HEADS BE CENTERED ABOVE THE LANES.

REVISIONS	
NAME	DATE

ILLINOIS DEPARTMENT OF TRANSPORTATION
 TRAFFIC SIGNAL DETAILS
 FAP 68 (IL 23 NB)/COLUMBUS ST
 AND LAFAYETTE STREET
 SECTION 35,51 & 48 CS, 12)TS
 LA SALLE COUNTY

SCALE: VERT. DRAWN BY ARR
 HORIZ. CHECKED BY JLS
 DATE 11/08