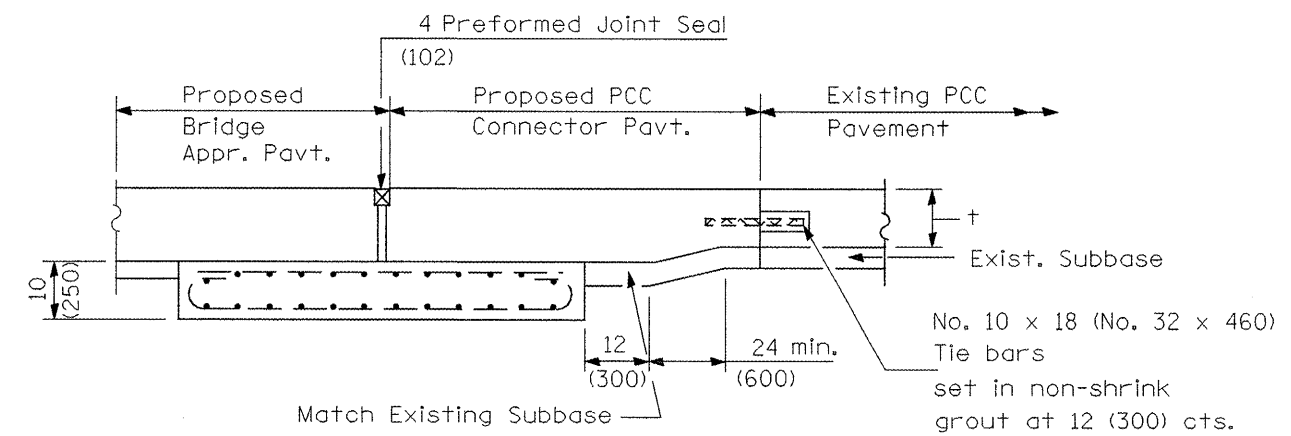
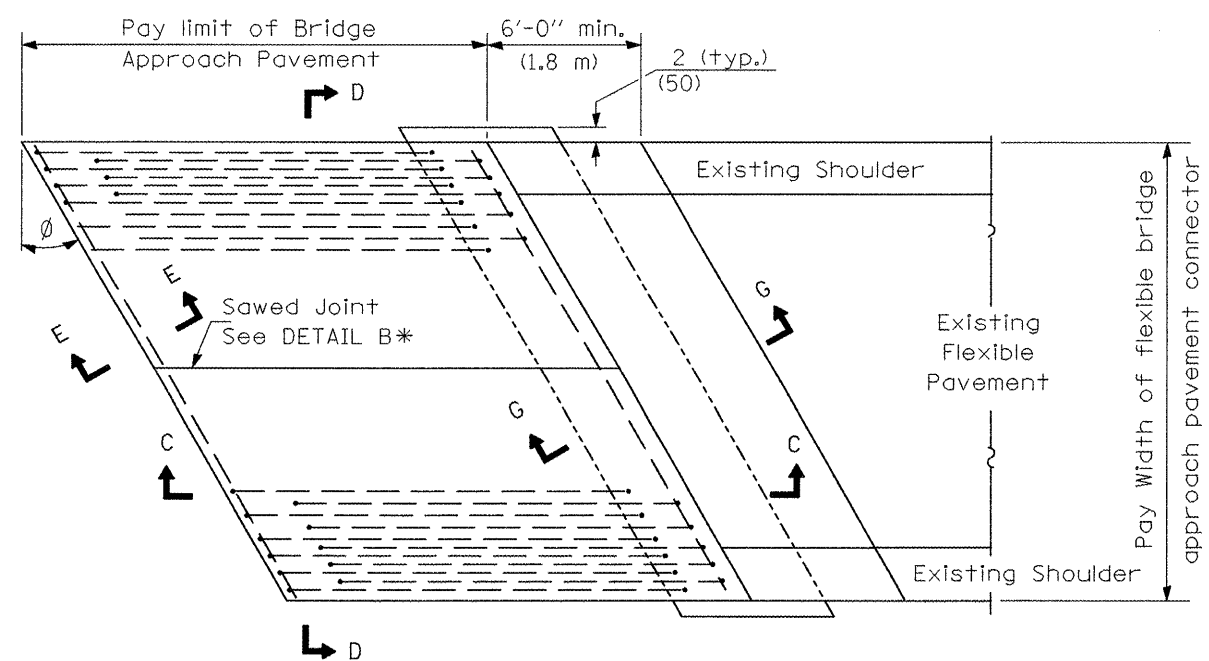


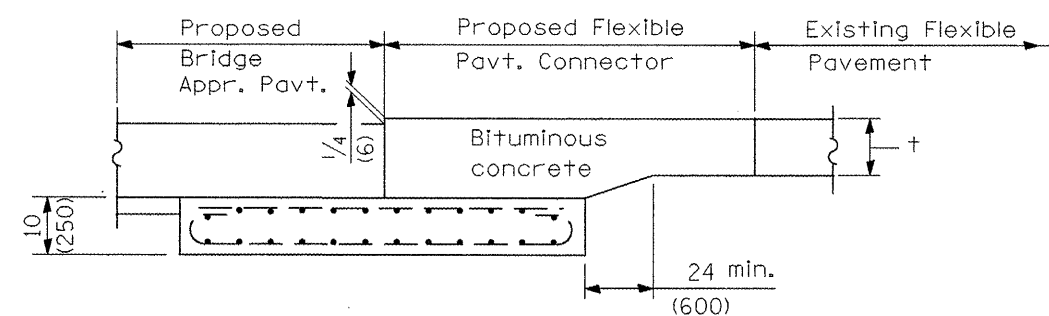
BRIDGE APPROACH PAVEMENT CONNECTOR (PCC)



SECTION G-G - RIGID PAVEMENT



BRIDGE APPROACH PAVEMENT CONNECTOR (FLEXIBLE)



SECTION G-G - FLEXIBLE PAVEMENT

FILE NAME = As Submitted - Roadway Plans.dgn	USER NAME = toro_ja	DESIGNED - OWR	REVISED - N/A	STATE OF ILLINOIS DEPARTMENT OF TRANSPORTATION	BRIDGE APPROACH PAVEMENT I-74 OVER TOWNSHIP ROAD 205		F.A.I. RTE. 74	SECTION 48(27RS-3); (27HB-5)I, I-1	COUNTY KNOX	TOTAL SHEETS 104	SHEET NO. 37
	PLOT SCALE = 100.00' / IN.	DRAWN - OWR	REVISED - N/A		SCALE: -----	SHEET NO. -- OF-- SHEETS	STA. 532+00.00 TO STA. 590+88.88	CONTRACT NO. 68062		FED. ROAD DIST. NO. 4 ILLINOIS	
	PLOT DATE = 12/12/2008	CHECKED - FML	REVISED - N/A					FED. AID PROJECT 68062			
		DATE - OCTOBER, 2008	REVISED - N/A								