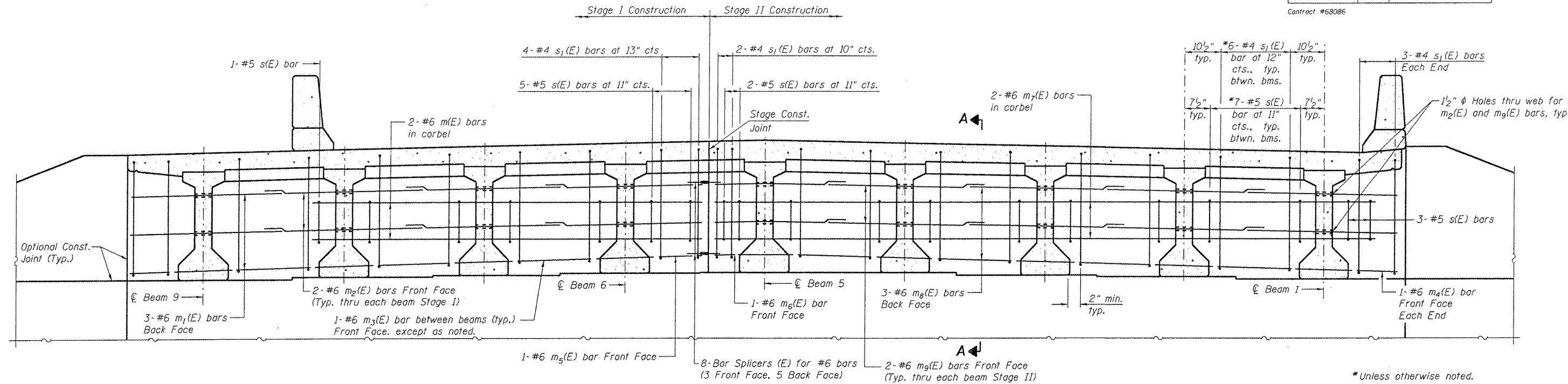


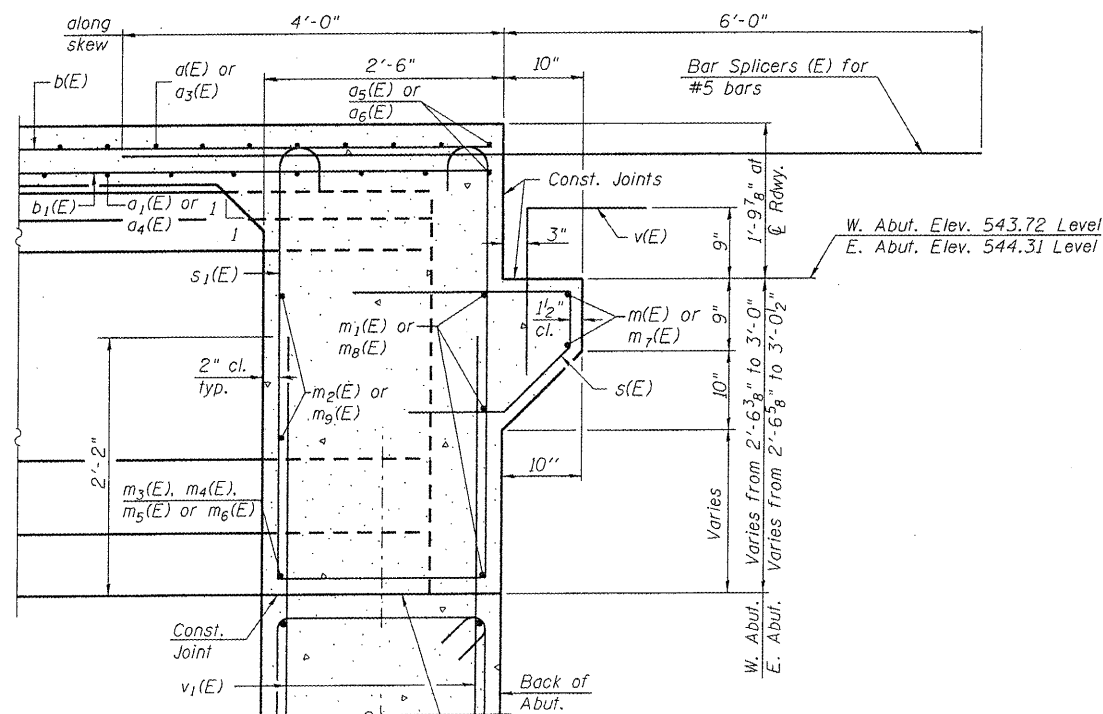
ROUTE NO.	SECTION	COUNTY	SHEET	SHEET	SHEET NO.
FAU 6757 (US 150)	(105B) BR-3	Tozowell	133	78	24 SHEETS
FED. ROAD DIST. NO. 7	ILLINOIS	FED. AID PROJECT			

Contract #68086



DIAPHRAGM ELEVATION AT WEST ABUTMENT

(Looking West)
East Abutment mirror image



SECTION A-A

Dimensions at right angles to abutment, except as shown.

Notes:

Reinforcement bars in diaphragm are billed with superstructure on sheet 9 of 24.

Concrete in diaphragm is included with Concrete Superstructure on sheet 9 of 24.

For details of bars s(E) and s₁(E) see sheet 9 of 24.

The s(E) and s₁(E) bars shall be placed parallel to the beams. Spacing for these bars shall be at right angles to the beams. Corbel shall be omitted from diaphragm as shown on sheet 8 of 24 in plan view.

MIN. BAR LAP

#6 bar = 2'-9"

Lin Engineering, Ltd.
Consulting Engineers
Chatham, Illinois

Designed By: RW
Checked By: DLS
Date: 10/07

Drawn By: AJF
File: 090-0176.DGN

REVISIONS	
NAME	DATE

ILLINOIS DEPARTMENT OF TRANSPORTATION
CONCRETE END DIAPHRAGMS
U.S. 150 OVER LITTLE FARM CREEK
F.A.U. ROUTE 6757 SECTION (105B)BR-3
TAZEWELL COUNTY
STA. 89+80.58
S.N. 090-0176