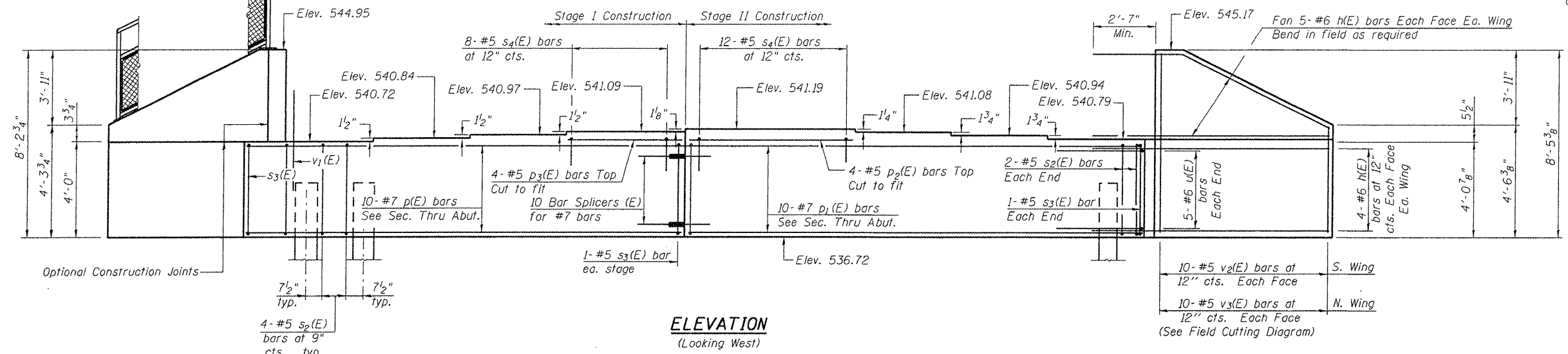
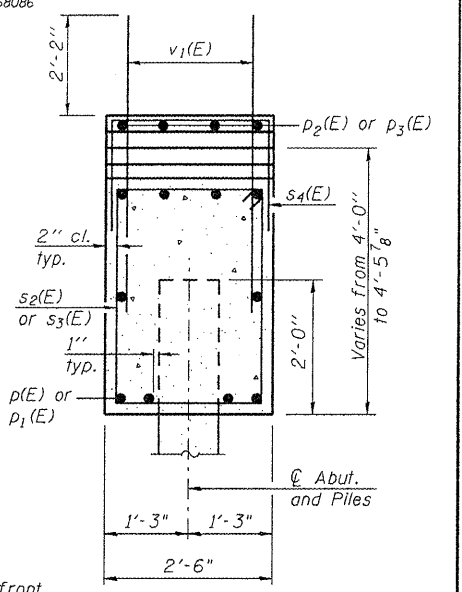


Note:
Pour steps monolithically with cap.

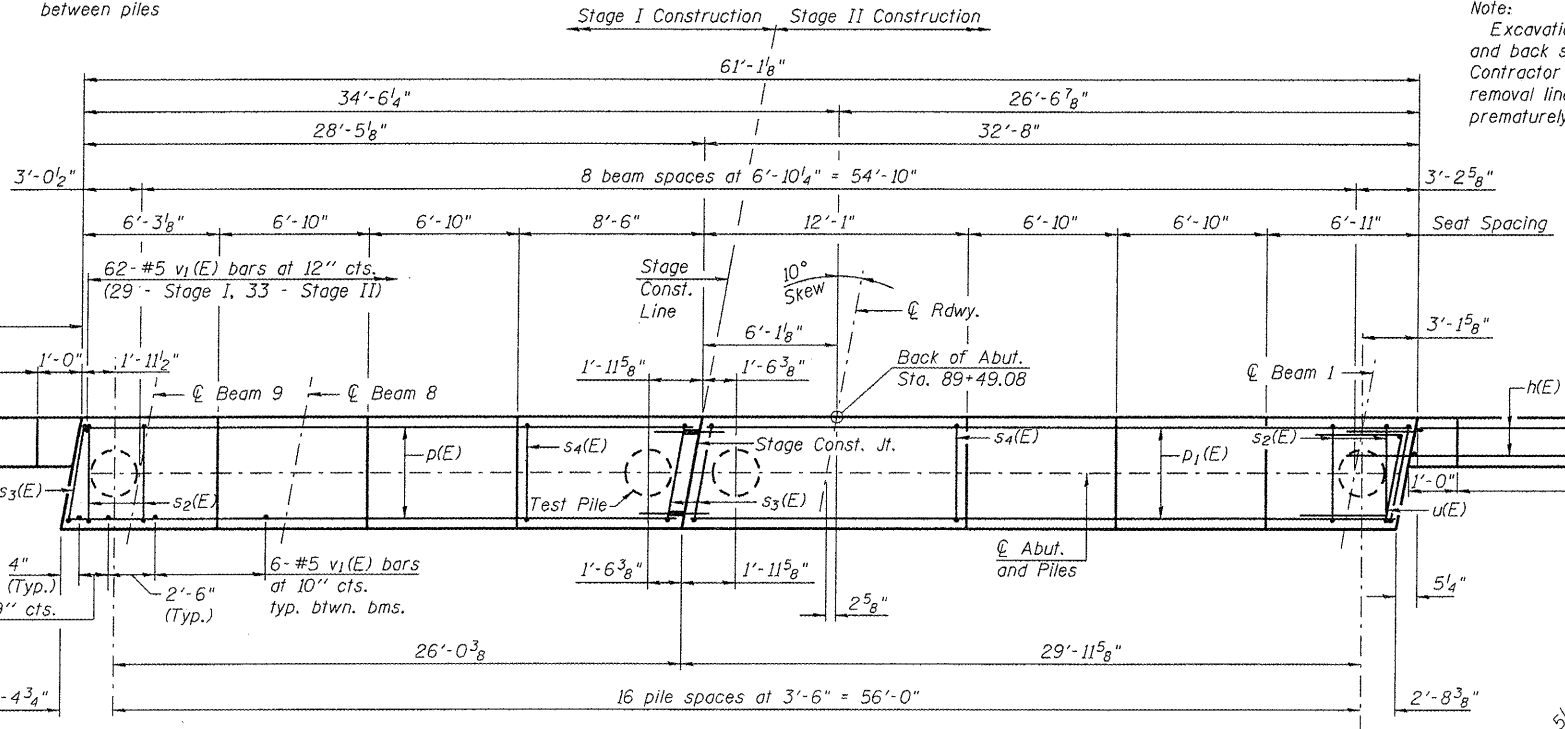


ELEVATION
(Looking West)

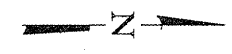


SEC. THRU ABUT.
(Dimensions at Rt. L's)

Note:
Excavation behind existing abutment walls shall be performed to balance front and back soil pressure before removing the existing superstructure. The Contractor shall sawcut the upper portion of the existing abutment at the stage removal line before Stage I removal to ensure the remaining portion will not be prematurely damaged.



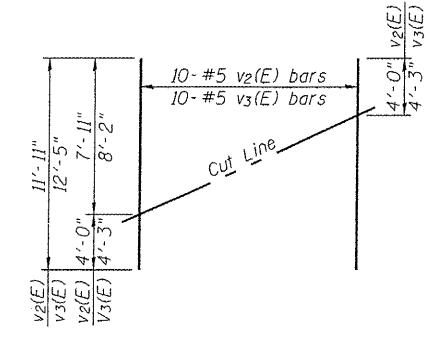
PLAN



BILL OF MATERIAL
(West Abutment)

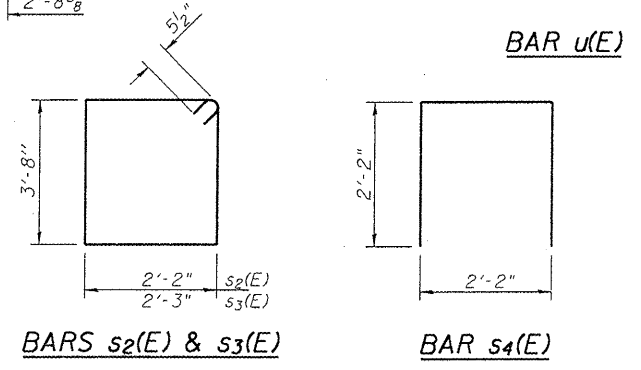
Bar	No.	Size	Length	Shape
h(E)	36	#6	11'-7"	—
p(E)	10	#7	28'-1"	—
p1(E)	10	#7	32'-4"	—
p2(E)	4	#5	12'-0"	—
p3(E)	4	#5	8'-6"	—
s2(E)	68	#5	12'-7"	□
s3(E)	4	#5	12'-9"	□
s4(E)	20	#5	6'-6"	□
u(E)	10	#6	7'-3"	┘
v1(E)	116	#5	4'-4"	—
v2(E)	10	#5	11'-11"	—
v3(E)	10	#5	12'-5"	—
Structure Excavation		Cu. Yd.	223	
Concrete Structures		Cu. Yd.	28.6	
Reinforcement Bars, Epoxy Coated		Pound	3920	
Furnishing Metal Shell Piles, 12" x .25 in.		Foot	544	
Driving Piles		Foot	544	
Test Pile, Metal Shells		Each	1	

PILE DATA
Type: Metal Shell - 12" ϕ x .25 in. Walls
Nominal Required Bearing: 270 kips
Allowable Resistance Available: 90 kips
Est. Length: 34 ft.
No. Production Piles: 16
No. Test Piles: 1



FIELD CUTTING DIAGRAM

Order v2(E) and v3(E) full length. Cut as shown and use remainder of bars in opposite face.



BARS s2(E) & s3(E)

BAR s4(E)

REVISIONS	
NAME	DATE

Lin Engineering, Ltd.
Consulting Engineers
Chatham, Illinois

Designed By: RKM Checked By: DLS Drawn By: AJF
Date: 10/07 File: 090-0176.DWG

ILLINOIS DEPARTMENT OF TRANSPORTATION
WEST ABUTMENT
U.S. 150 OVER LITTLE FARM CREEK
F.A.U. ROUTE 6757 SECTION (105B)BR-3
TAZEWELL COUNTY
STA. 89+80.58
S.N. 090-0176

\$FILEABBREV\$
 \$TIME\$
 \$DATE\$