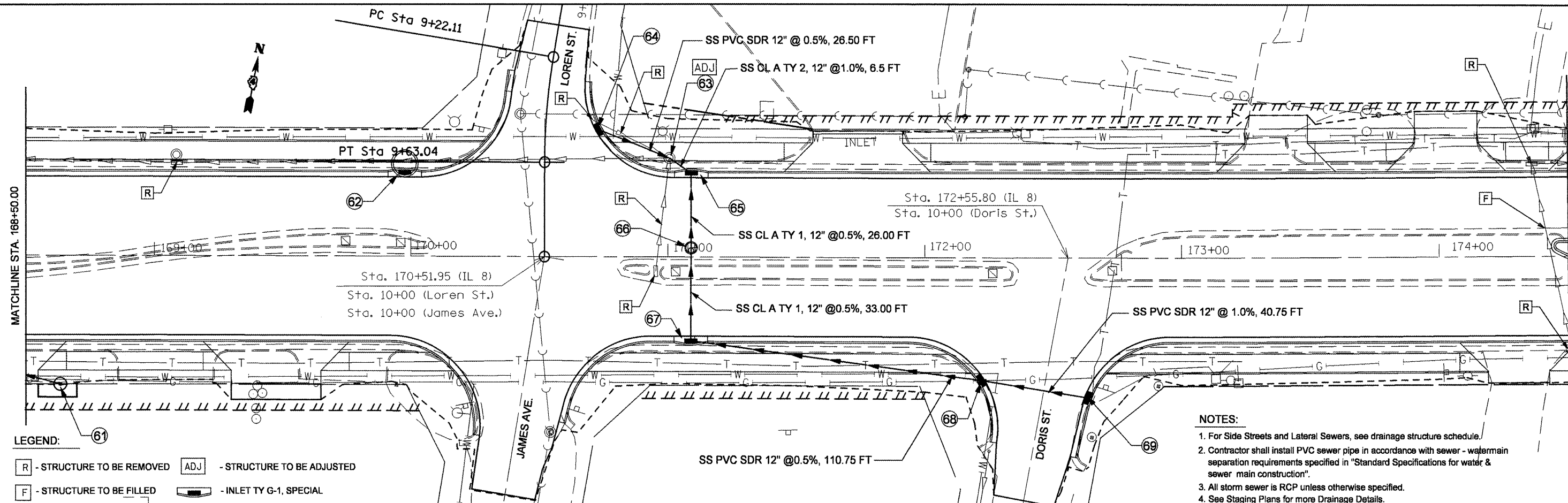


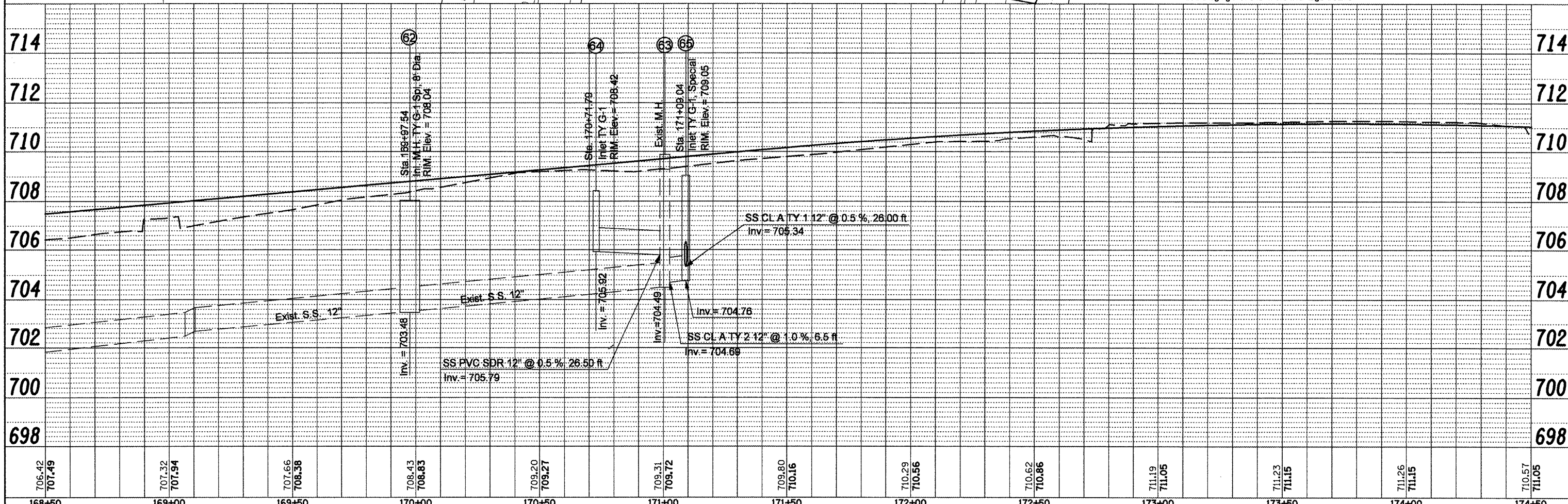
PLAN	SURVEYED	BY	DATE
	NOTED		
	ALIGNED		
	CHECKED		
	FILED		
	NO.		

PROFILE	SURVEYED	BY	DATE
	NOTED		
	GRADES		
	CHECKED		
	STRUCTURE		
	NOTATION		
	CHFD		
	NO.		



LEGEND:
 [R] - STRUCTURE TO BE REMOVED [ADJ] - STRUCTURE TO BE ADJUSTED
 [F] - STRUCTURE TO BE FILLED [INLET] - INLET TY G-1, SPECIAL

- NOTES:
 1. For Side Streets and Lateral Sewers, see drainage structure schedule.
 2. Contractor shall install PVC sewer pipe in accordance with sewer - watermain separation requirements specified in "Standard Specifications for water & sewer main construction".
 3. All storm sewer is RCP unless otherwise specified.
 4. See Staging Plans for more Drainage Details.



FILE NAME = copy of drainage plan ltdgn	USER NAME = swasher-dh	DESIGNED -	REVISED -	STATE OF ILLINOIS DEPARTMENT OF TRANSPORTATION	IL RTE 8 - DRAINAGE PLANS LT SIDE	F.A.P. RTE. 399	SECTION 36 R-8	COUNTY TAZEWELL	TOTAL SHEETS 429	SHEET NO. 106	CONTRACT NO. 68258
PLOT SCALE = 48,0000' / IN.	CHECKED -	REVISED -	SCALE:			SHEET NO. OF SHEETS STA. TO STA.	FED. ROAD DIST. NO. 4 ILLINOIS FED. AID PROJECT				
PLOT DATE = 12/11/2008	DATE -	REVISED -									