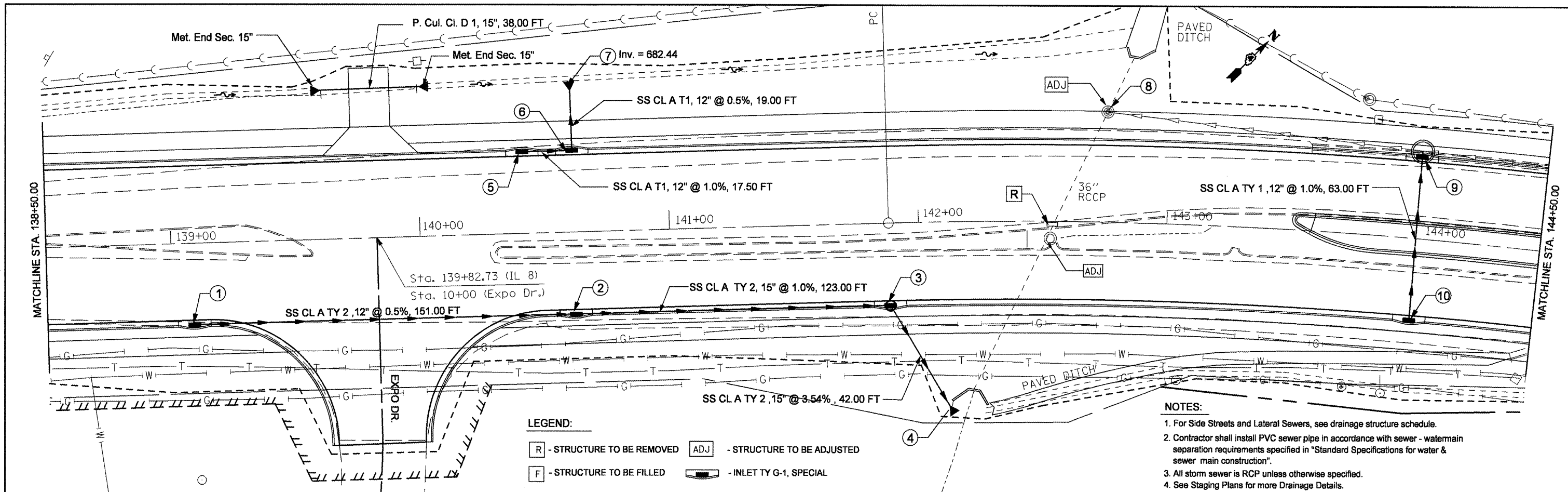


DATE	
BY	
DESIGNED	
DRAWN	
CHECKED	
DATE	
NO.	
FILE NAME	

DATE	
BY	
DESIGNED	
DRAWN	
CHECKED	
DATE	
NO.	
FILE NAME	

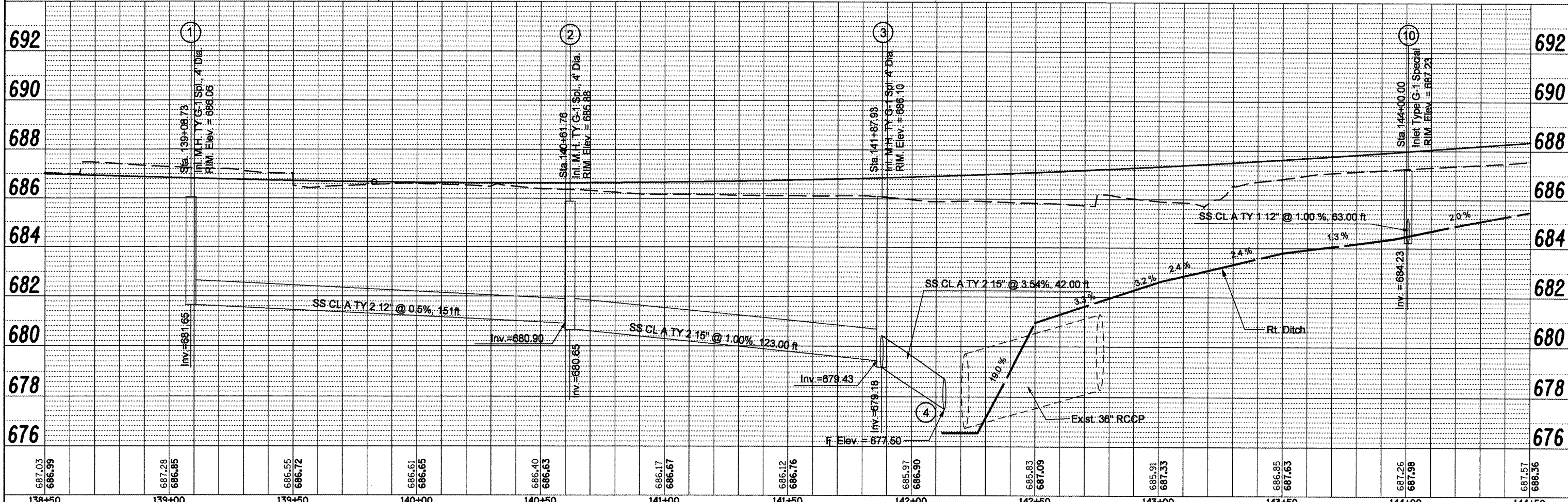


**LEGEND:**

[R] - STRUCTURE TO BE REMOVED    [ADJ] - STRUCTURE TO BE ADJUSTED

[F] - STRUCTURE TO BE FILLED    [Symbol] - INLET TY G-1, SPECIAL

- NOTES:**
1. For Side Streets and Lateral Sewers, see drainage structure schedule.
  2. Contractor shall install PVC sewer pipe in accordance with sewer - watermain separation requirements specified in "Standard Specifications for water & sewer main construction".
  3. All storm sewer is RCCP unless otherwise specified.
  4. See Staging Plans for more Drainage Details.



FILE NAME =	USER NAME = swisher-dh	DESIGNED -	REVISED -	STATE OF ILLINOIS DEPARTMENT OF TRANSPORTATION	IL RTE 8 - DRAINAGE PLANS RT SIDE	F.A.P. RTE. 399	SECTION 36 R-8	COUNTY TAZEWELL	TOTAL SHEETS 429	SHEET NO. 113	CONTRACT NO. 68258
copy of drainage plan rtdgn	PLOT SCALE = 40.0000' / IN.	DRAWN -	REVISED -	SCALE:	SHEET NO. OF SHEETS	STA. TO STA.	FED. ROAD DIST. NO. 4 (ILLINOIS) FED. AID PROJECT				
PLOT DATE = 12/11/2008	DATE -	CHECKED -	REVISED -								