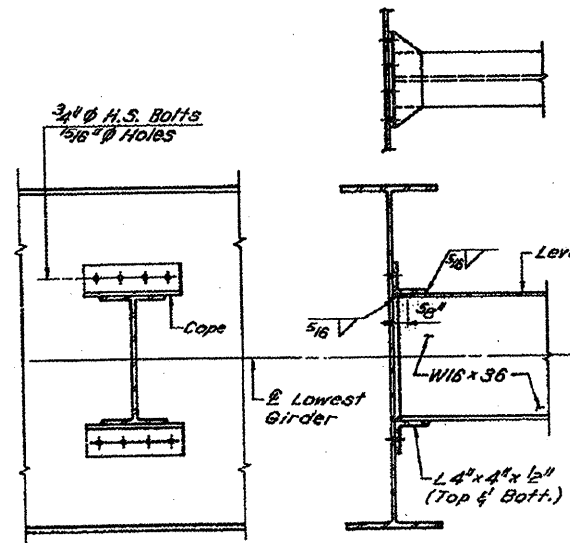
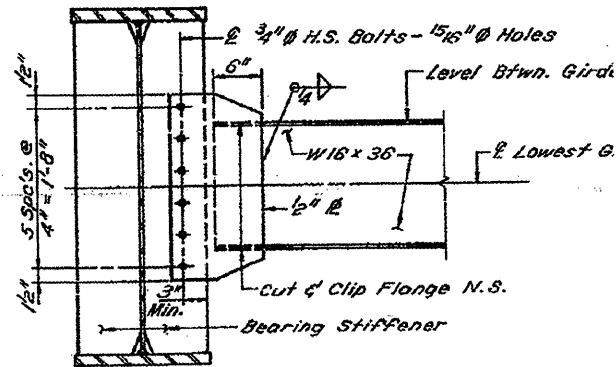


INFORMATION ONLY

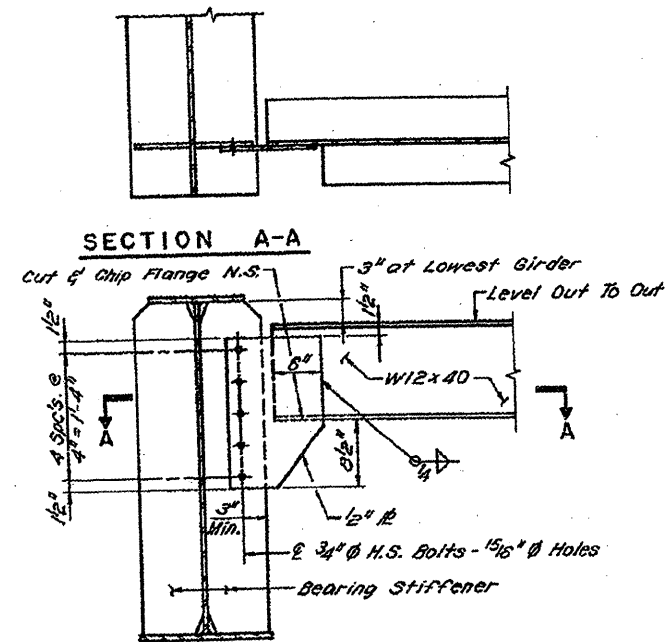
ROUTE	SECTION	COUNTY	TOTAL SHEETS	SHEET NO.
I-155	D4 BRG PNTG MTLZG 08	TAZEWELL	10	11



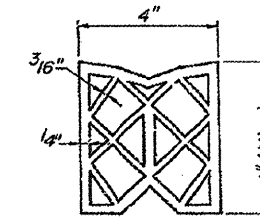
INTERIOR DIAPHRAGM D1
(40 REQ'D.)



INTERIOR DIAPHRAGM AT PIER D2
(8 REQ'D.)

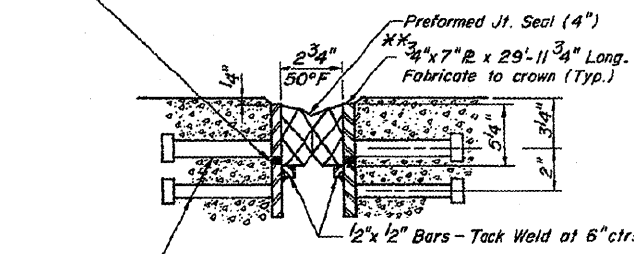


END DIAPHRAGM D
(8 REQ'D.)

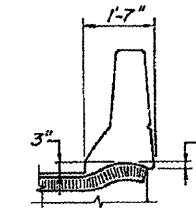


PREFORMED JOINT SEAL (4")

7/16" \emptyset Holes at 12" ctrs., for 3/8" \emptyset bolts. All bolts shall be burned, sawed or chipped off flush with the plates, after forms are removed. (Typ.)



3/4" \emptyset x 8" Granular or solid flux filled headed studs conforming to Art. 710.38 of the Standard Spec's., automatically and welded at 12" All. ctrs. (30 Req'd. each side.)
 ** Furnish in segments of 20 Ft. max. length. Maximum space between installed segments shall be 3/16". Seal space with Silicone Sealant suitable for Structural Steel.



TYPICAL END OF SEAL TREATMENTS

NOTE: After fabrication all surfaces of the steel plates shall be given one shop coat of paint specified for Structural Steel.

PREFORMED JOINT SEAL (4")
(AT EAST ABUTMENT)

BILL OF MATERIAL

Item	Unit	Total
Preformed Joint Seal (4")	Lin. Ft.	33

090-0139

JOINT DETAIL & DIAPHRAGMS