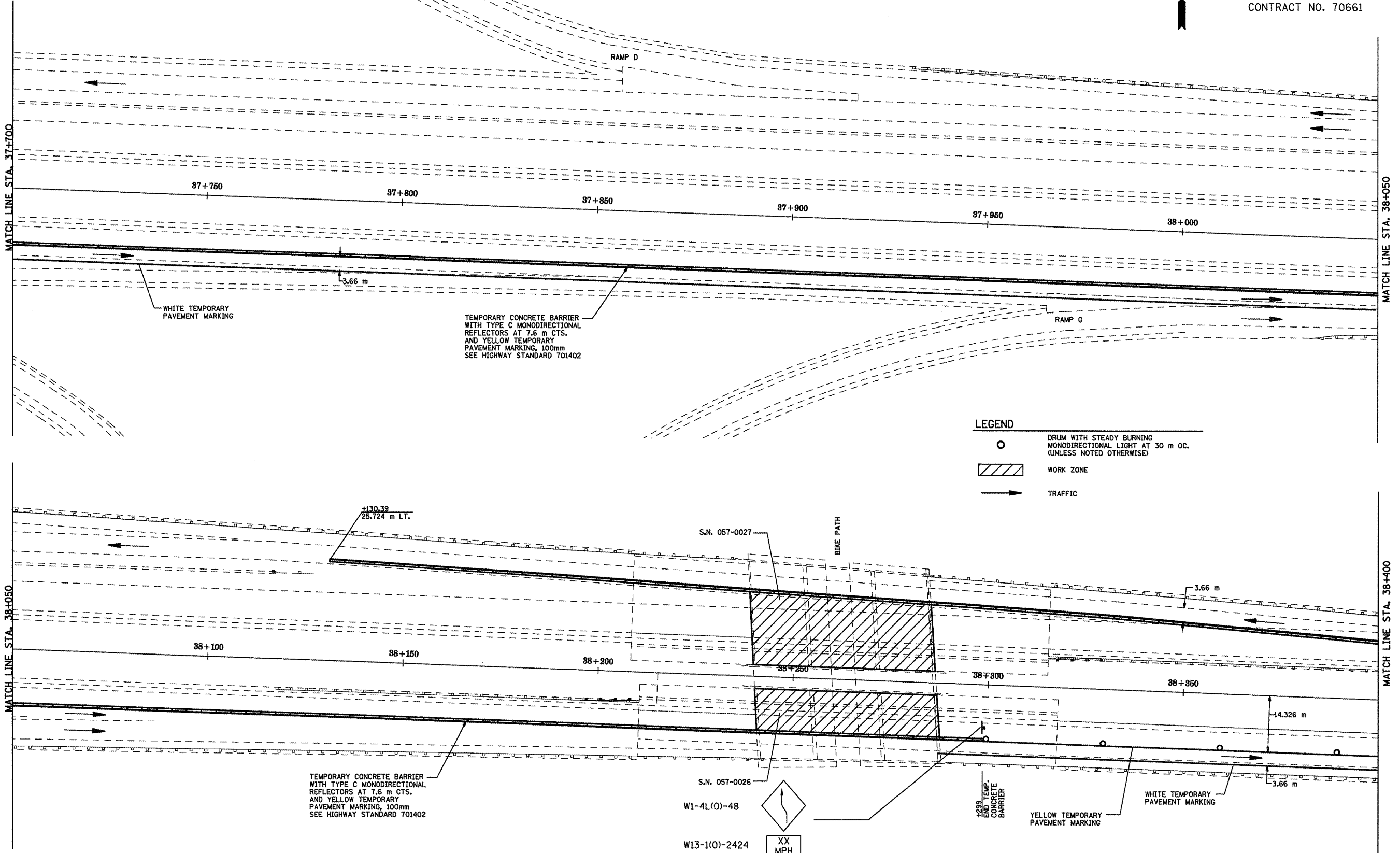
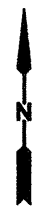


NOTE: TRAFFIC CONTROL ITEMS AND DEVICES NOT DETAILED SHALL BE IN ACCORDANCE WITH HIGHWAY STANDARDS 701400, 701401, 701402, AND 701411.

F.A.I. RTE.	SECTION	COUNTY	TOTAL SHEETS	SHEET NO.
55	*	McLEAN	70	21
STA. 37+700		TO STA. 38+400		
FED. ROAD DIST. NO.		ILLINOIS	FED. AID PROJECT	

• (157-4)HBR-5&VBR-11&57-2HB-1
CONTRACT NO. 70661



LEGEND

○	DRUM WITH STEADY BURNING MONODIRECTIONAL LIGHT AT 30 m OC. (UNLESS NOTED OTHERWISE)
▨	WORK ZONE
→	TRAFFIC

TEMPORARY CONCRETE BARRIER WITH TYPE C MONODIRECTIONAL REFLECTORS AT 7.6 m CTS. AND YELLOW TEMPORARY PAVEMENT MARKING, 100mm SEE HIGHWAY STANDARD 701402

S.N. 057-0026
W1-4L(O)-48
W13-1(O)-2424
XX MPH

4298 END TEMP. CONCRETE BARRIER
YELLOW TEMPORARY PAVEMENT MARKING
WHITE TEMPORARY PAVEMENT MARKING

STAGE CONSTRUCTION DETAILS - STAGE 1
F.A.I. 55
MCLEAN COUNTY