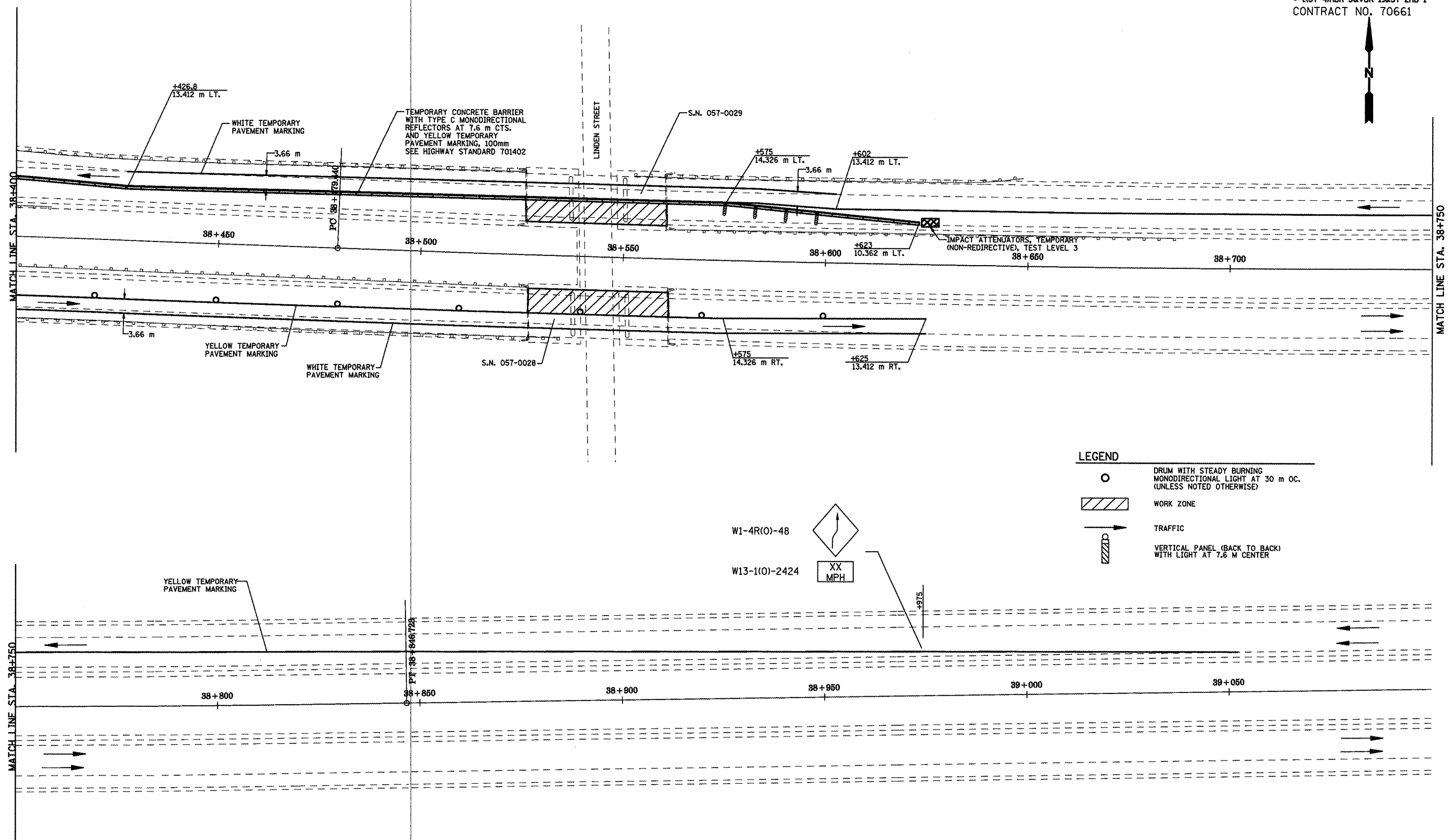


NOTE: TRAFFIC CONTROL ITEMS AND DEVICES NOT DETAILED SHALL BE IN ACCORDANCE WITH HIGHWAY STANDARDS 701400, 701401, 701402, AND 701411.

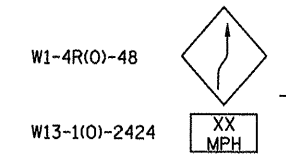
F.A.I. RTE.	SECTION	COUNTY	TOTAL SHEETS	SHEET NO.
55	•	McLEAN	70	22
STA. 38+400		TO STA. 39+100		
FED. ROAD DIST. NO.		ILLINOIS	FED. AID PROJECT	

• [(57-4)HBR-5&VBR-1] & 57-2HB-1
CONTRACT NO. 70661



LEGEND

	DRUM WITH STEADY BURNING MONODIRECTIONAL LIGHT AT 30 m OC. (UNLESS NOTED OTHERWISE)
	WORK ZONE
	TRAFFIC
	VERTICAL PANEL (BACK TO BACK) WITH LIGHT AT 7.6 M CENTER



STAGE CONSTRUCTION DETAILS - STAGE 1
F.A.I. 55
MCLEAN COUNTY