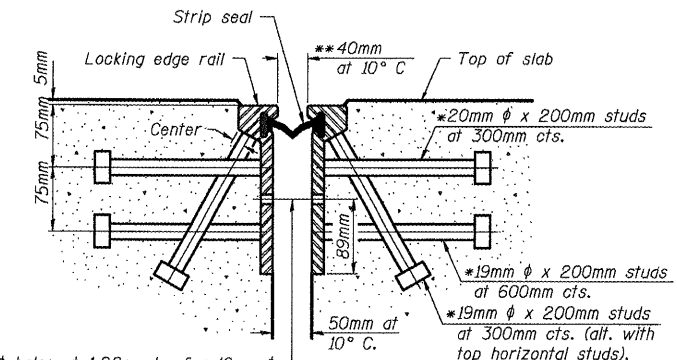


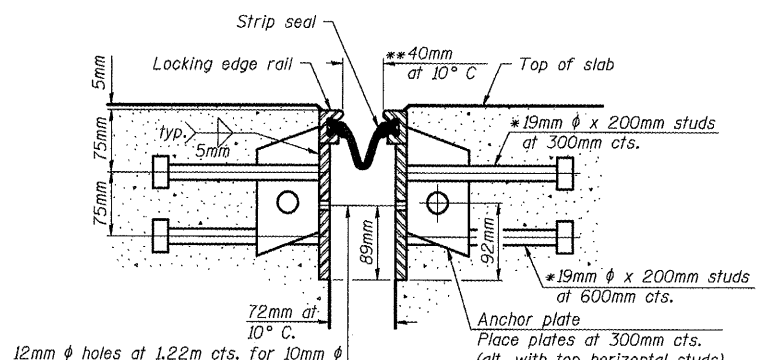
ROUTE NO.	DISTRICT	COUNTY	SECTION	SHEET NO.
FAI 55	*	McLEAN	70	48
SHEET NO. 10A				
10A SHEETS				

\* Granular or solid Flux filled headed studs conforming to Article 1006.32 of the Std. Specs., automatically end welded.

\*\* When joint is fixed, dimension is set at 40mm.



12mm  $\phi$  holes at 1.22m cts. for 10mm  $\phi$  bolts. All bolts shall be burned, sawed, or chipped off flush with the plates after forms are removed, typ.

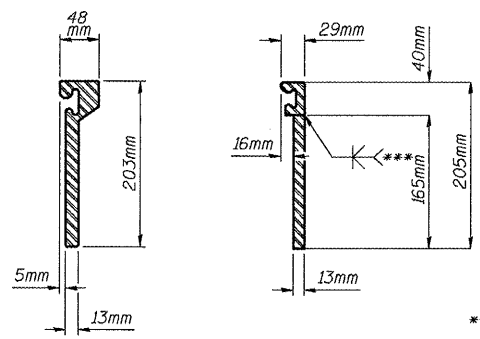


12mm  $\phi$  holes at 1.22m cts. for 10mm  $\phi$  bolts. All bolts shall be burned, sawed, or chipped off flush with the plates after forms are removed, typ.

Notes:  
 The strip seal shall be made continuous and shall have a minimum thickness of 5mm. The configuration of the strip seal shall match the configuration of the Locking Edge Rails. Open or "webbed" strip seal gland configurations are not permitted. The gland shall be sized for a maximum rated movement of 4 inches.  
 The height and thickness of the Locking Edge Rails shown are minimum dimensions. The actual configuration of the Locking Edge Rails and matching strip seal may vary from manufacturer to manufacturer. Flanged edge rails will not be allowed. Locking Edge Rails may be spliced at slope discontinuities and stage construction joints.  
 The manufacturer's recommended installation methods shall be followed. The joint opening and deck dimensions detailed on the superstructure are based on a rolled rail expansion joint. If the Contractor elects to use the welded rail expansion joint, the opening and deck dimensions shall be modified according to the dimensions detailed on this sheet. Required modifications shall be made at no additional cost to the State.  
 All steel components shall be galvanized after fabrication according to Article 520.03 of the Standard Specifications.

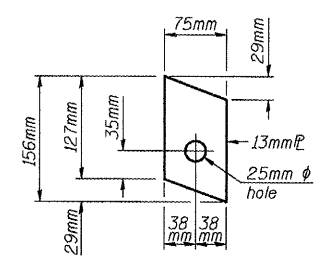
All dimensions are in millimeters (mm) except as noted.

**SECTION THRU ROLLED RAIL JOINT**

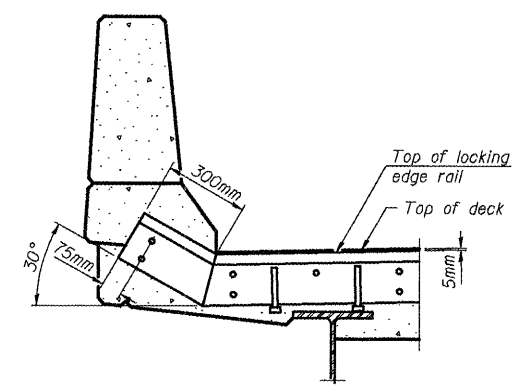


**ROLLED (EXTRUDED) RAIL**    **WELDED RAIL**

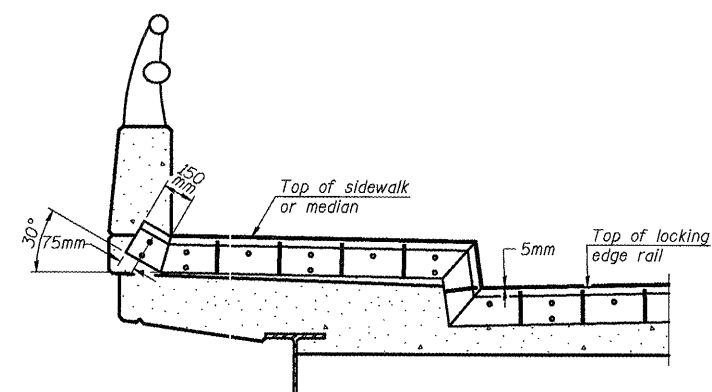
**SECTION THRU WELDED RAIL JOINT**



**ANCHOR PLATE**  
(for welded rail)



**AT PARAPET**



**AT SIDEWALK OR MEDIAN**

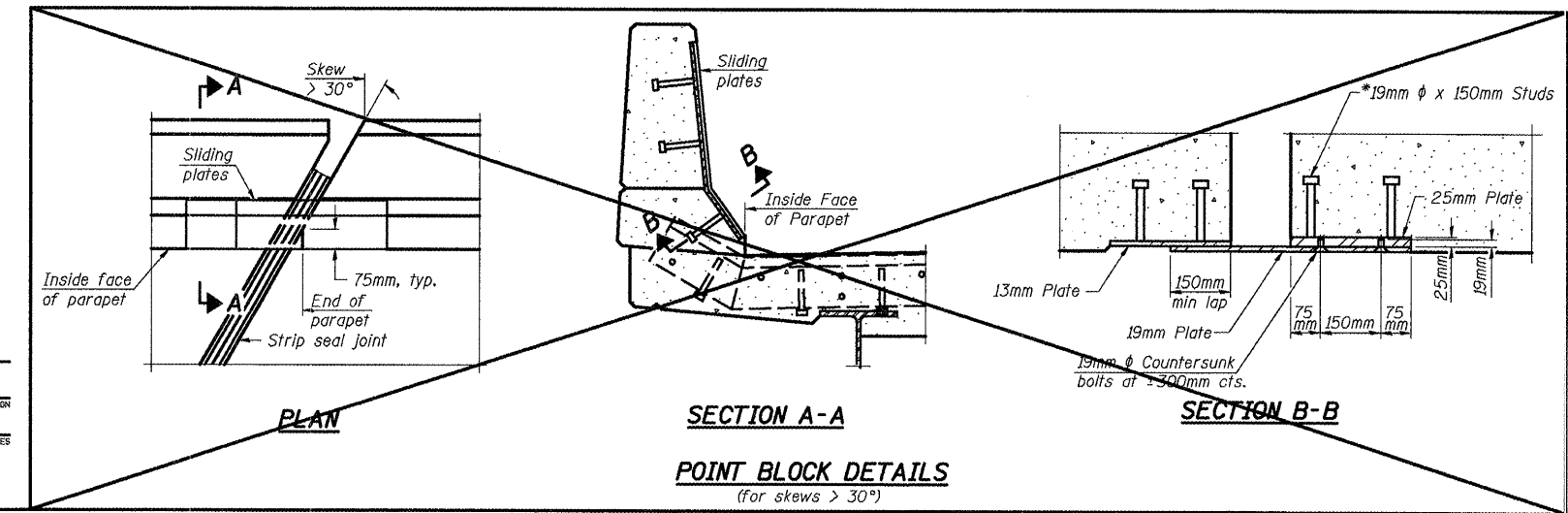
Shorter plates with a single row of studs at 300mm cts. may be necessary on medians which are shallower than 230mm. See manufacturer's recommendation.

\*\*\* Back gouge not required if complete joint penetration is verified by mock-up.

**LOCKING EDGE RAIL SPLICE**

The inside of the locking edge rail groove shall be free of weld residue.

**LOCKING EDGE RAILS**



**TYPICAL END TREATMENTS**

**BILL OF MATERIAL**

Item	Unit	Total
Preformed Joint Strip Seal	Meter	112.2

DESIGNED	JDA
CHECKED	JKC
DRAWN	NQ
CHECKED	JDA

EXAMINED	200
PASSED	ENGINEER OF BRIDGE DESIGN
	ENGINEER OF BRIDGES AND STRUCTURES

**PREFORMED JOINT STRIP SEAL**  
 F.A.I. 55 OVER BUSINESS U.S. 51  
 McLEAN COUNTY  
 SN 057-0024 (NB)  
 SN 057-0025 (SB)  
 STA. 37+474.206