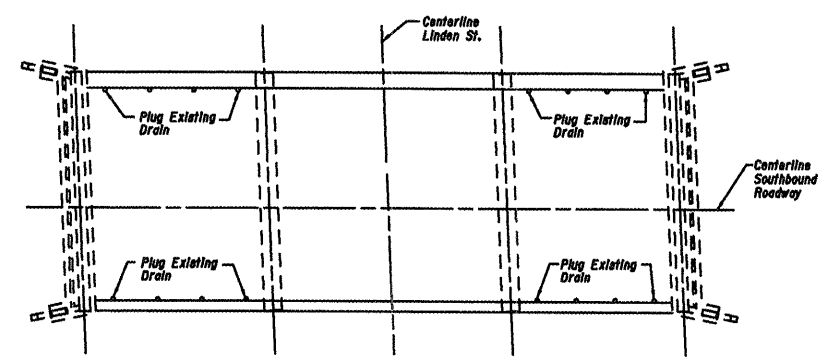


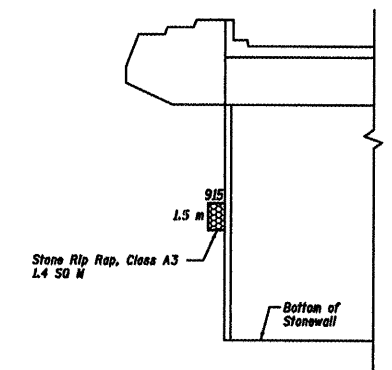
ROUTE NO.	DISTRICT	COUNTY	SECTION	SHEET NO.
FAY 55	6	McLEAN	70	68
PREPARED BY: JDA		DATE: 08/01/02		

SHEET NO. 3  
5 SHEETS

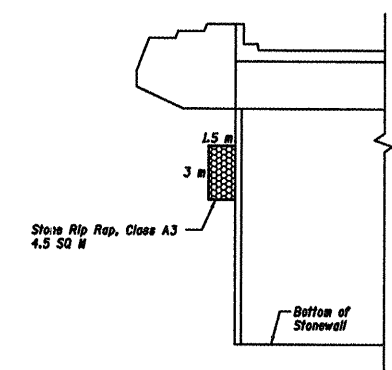
• (157-1)HBR-5&VBR-11&57-2HB-1



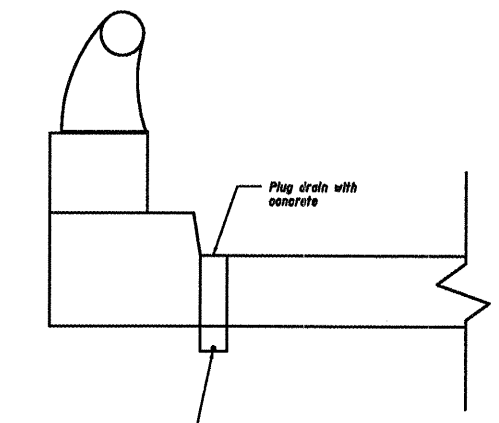
**DECK DRAIN PLAN**  
SN 057-0029 (SB)  
(SN 057-0028 (NB) Stair)



**WEST SLOPEWALL, SOUTH END**  
SN 057-0028 (NB)

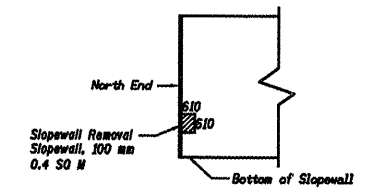


**EAST SLOPEWALL, NORTH END**  
SN 057-0028 (NB)

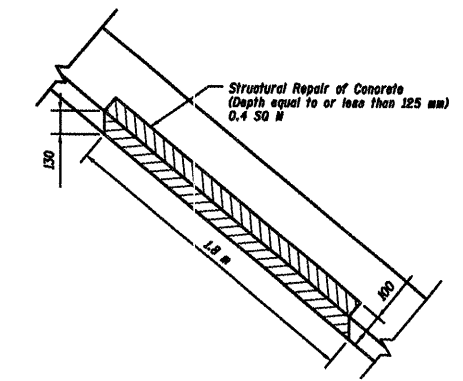


**DETAIL FOR DRAINS TO BE PLUGGED**

DESIGNED	JDA
CHECKED	JKC
DRAWN	NQ
CHECKED	JDA



**EAST SLOPEWALL**  
(Looking East)  
SN 057-0029 (SB)  
Welded Wire Fabric: E22 x E32 - ANDES.8 x ANDES.8 with a mass of 2.51 kg/m<sup>2</sup>. A length of 150mm of existing welded wire across the removed area shall be exposed in order to lap with the proposed welded wire fabric.



**NORTH CURB OF BRIDGE DECK**  
SN 057-0029

**MISCELLANEOUS REPAIR DETAILS**  
F.A.I. 55 OVER LINDEN STREET  
McLEAN COUNTY  
SN 057-0028 (NB)  
SN 057-0029 (SB)  
STA. 38+543.992