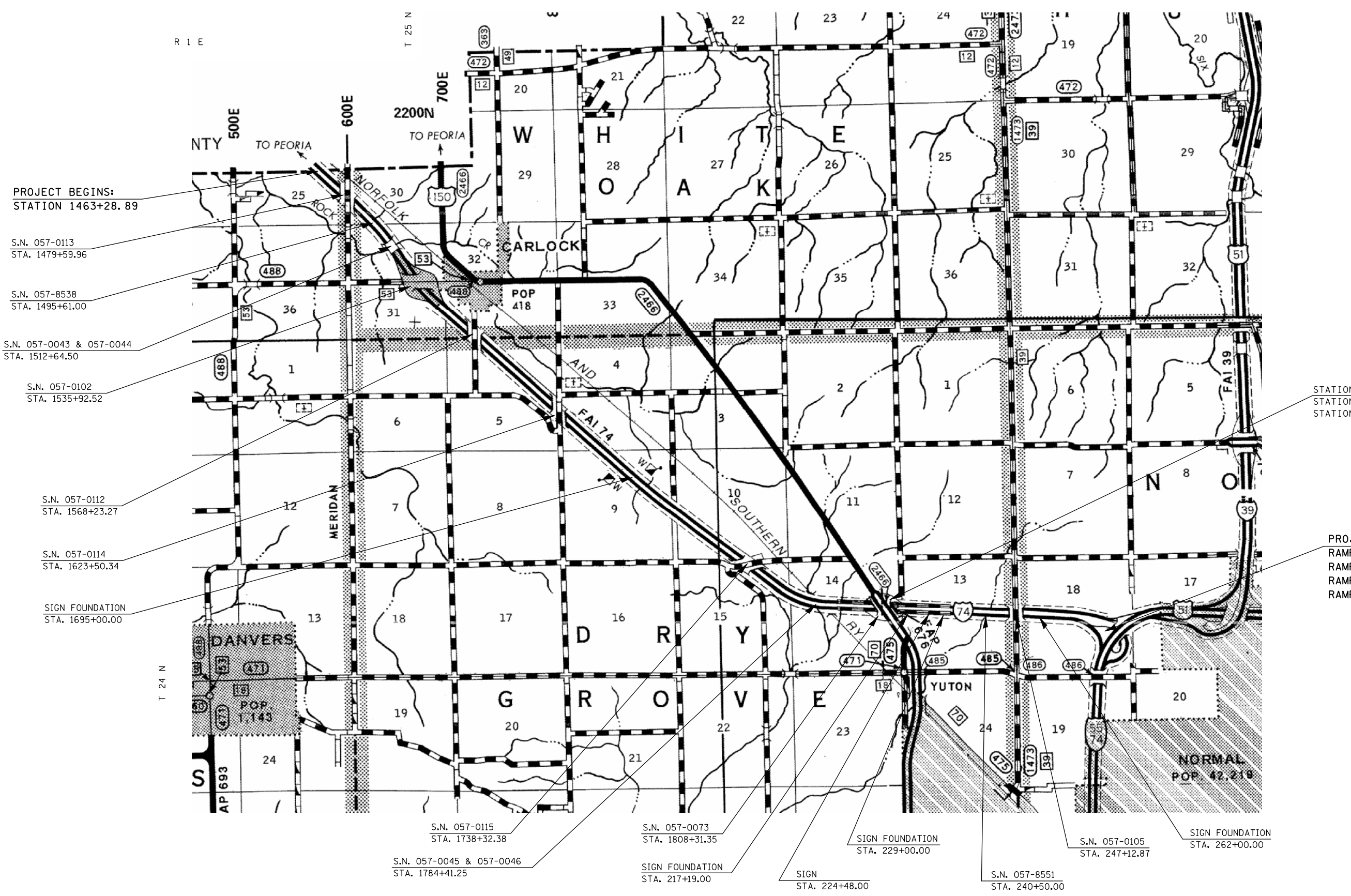


LOCATION MAP OF STRUCTURES

R 2 E



PROJECT BEGINS:
STATION 1463+28.89

S.N. 057-0113
STA. 1479+59.96

S.N. 057-8538
STA. 1495+61.00

S.N. 057-0043 & 057-0044
STA. 1512+64.50

S.N. 057-0102
STA. 1535+92.52

S.N. 057-0112
STA. 1568+23.27

S.N. 057-0114
STA. 1623+50.34

SIGN FOUNDATION
STA. 1695+00.00

STATION EQUATION:
STATION 1810+00.00 (BK.) =
STATION 188+89.99 (AH.)

PROJECT ENDS:
RAMP B = 297+86.57
RAMP C = 294+42.03
RAMP E = 291+91.19
RAMP F = 283+76.42

FILE NAME =	USER NAME = ceorlockjd	DESIGNED -	REVISED -	STATE OF ILLINOIS DEPARTMENT OF TRANSPORTATION	LOCATION MAP OF STRUCTURES	F.A.I. RTE. =	SECTION	COUNTY	TOTAL SHEETS	SHEET NO.
ce:\pwork\pwork\DOT\CEARLOCKJD\0101465\070744-sht-details.dgn		DRAWN -	REVISED -			74	DSSAFETY-1	MCLEAN	80	4
PLOT SCALE = 40.0000' / IN.		CHECKED -	REVISED -							
PLOT DATE = 12/11/2008		DATE -	REVISED -							
						SCALE:	SHEET NO.	OF SHEETS	STA.	TO STA.
						CONTRACT NO. 70744				
						FED. ROAD DIST. NO. ILLINOIS FED. AID PROJECT				