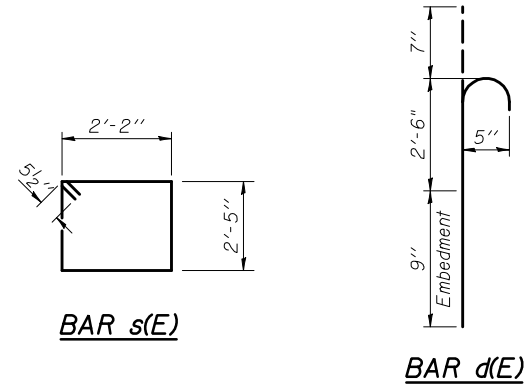
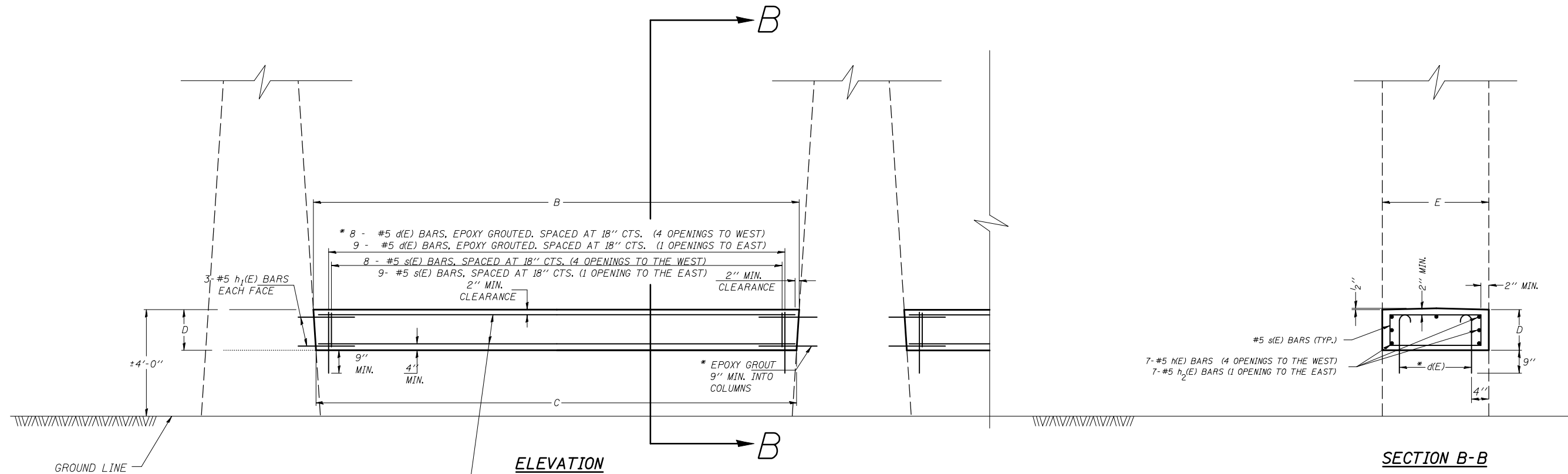


**S.N. 057-0073**



7- #5 h1(E) BARS (4 OPENINGS TO THE WEST)  
7- #5 h2(E) BARS (1 OPENING TO THE EAST)  
SPACE PER SECTION B-B

**GENERAL NOTES**

PLAN DIMENSIONS AND DETAILS RELATIVE TO EXISTING PLANS ARE SUBJECT TO NOMINAL CONSTRUCTION VARIATIONS. THE CONTRACTOR SHALL FIELD VERIFY EXISTING DIMENSIONS AND DETAILS AFFECTING NEW CONSTRUCTION AND MAKE NECESSARY APPROVED ADJUSTMENTS PRIOR TO CONSTRUCTION OR ORDERING OF MATERIALS. SUCH VARIATIONS SHALL NOT BE CAUSE FOR ADDITIONAL COMPENSATION FOR A CHANGE IN SCOPE OF THE WORK, HOWEVER, THE CONTRACTOR WILL BE PAID FOR THE QUANTITY ACTUALLY FURNISHED AT THE UNIT PRICE BID FOR THE WORK.

THE COST OF EPOXY GROUTING BARS SHALL BE INCLUDED WITH REINFORCEMENT BARS (EPOXY COATED).

REINFORCEMENT BARS SHALL CONFORM TO THE REQUIREMENTS OF ASTM A706 GR 60

REINFORCEMENT BARS DESIGNATED (E) SHALL BE EPOXY COATED.

\* EPOXY GROUT BARS IN 9" MIN. HOLES ACCORDING TO ARTICLE 584 OF THE STANDARD SPECIFICATIONS.

THE 4 OPENINGS TO THE WEST  
DIMENSION TABLE

LOCATION	B	C	D	E
EB PIER	12'-0"	11'-6"	2'-9"	2'-6"
CENTER PIER	12'-0"	11'-9"	2'-9"	2'-6"
WB PIER	12'-0"	11'-6"	2'-9"	2'-6"

THE OPENING FARTHEST EAST  
DIMENSION TABLE

LOCATION	B	C	D	E
EB PIER	14'-0"	13'-6"	2'-9"	2'-6"
CENTER PIER	13'-11"	13'-6"	2'-9"	2'-6"
WB PIER	14'-0"	13'-6"	2'-9"	2'-6"

BAR TABLE

BAR	QTY.	SIZE	LENGTH	SHAPE
d(E)	246	#5	3'-10"	
s(E)	123	#5	10'-1"	
h(E)	84	#5	11'-0"	— (THE 4 OPENINGS TO THE WEST)
h2(E)	21	#5	13'-2"	— (1 OPENING TO THE EAST)
h1(E)	180	#5	2'-9"	—

BILL OF MATERIALS

ITEM	UNIT	QUANTITY
CONCRETE STRUCTURES	CU. YD.	46.8
REINFORCEMENT BARS, EPOXY COATED	LB.	4040.0

FILE NAME =	USER NAME = ceorlockjd	DESIGNED - MLB	REVISED -
ce:\pw\work\pwidot\cearlockjd\01465\0570744-sht-details.dgn		DRAWN - BBP	REVISED -
	PLOT SCALE = 40.0000 ' / IN.	CHECKED -	REVISED -
	PLOT DATE = 12/11/2008	DATE - 10/16/08	REVISED -

**STATE OF ILLINOIS  
DEPARTMENT OF TRANSPORTATION**

**CRASHWALL EXTENSION  
(SIX COLUMN PIER)**

SCALE: N/A SHEET NO. 1 OF 1 SHEETS STA. TO STA.

F.A.I. RTE.	SECTION	COUNTY	TOTAL SHEETS	SHEET NO.
74	D5SAFETY-1	MCLEAN	80	20
CONTRACT NO. 70744				
FED. ROAD DIST. NO. ILLINOIS FED. AID PROJECT				