

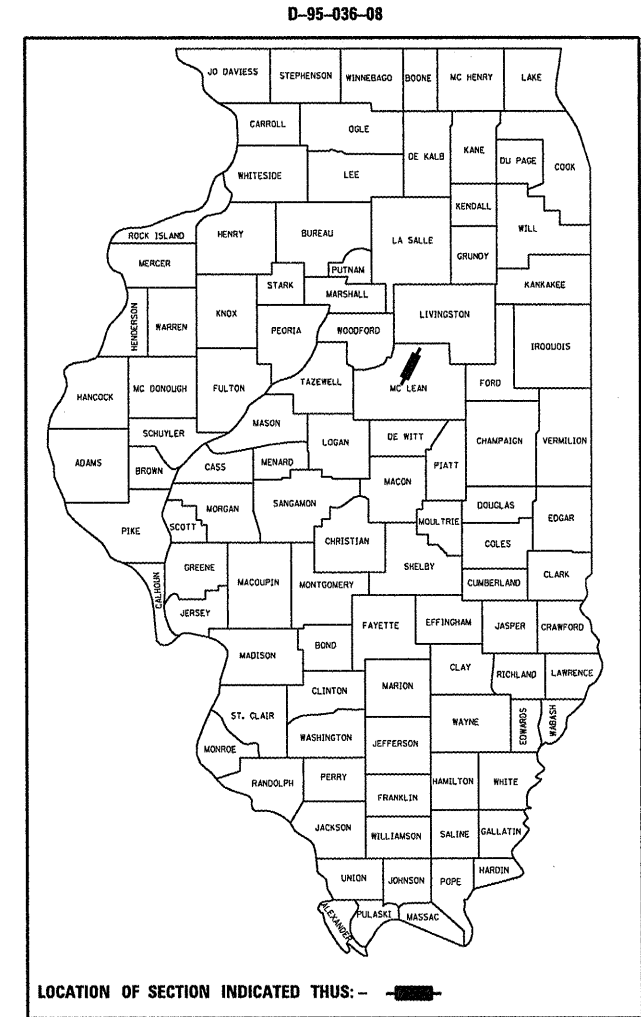
STATE OF ILLINOIS  
 DEPARTMENT OF TRANSPORTATION  
 DIVISION OF HIGHWAYS

**PROPOSED  
 HIGHWAY PLANS**

F.A.I. ROUTE 55 (I-55)  
 SECTION D5Safety-2  
 PROJECT HSIP-055-5(108)168  
 GUARDRAIL IMPACT ATTENUATORS  
 McLEAN COUNTY

F.A.I. RTE.	SECTION	COUNTY	TOTAL SHEETS	SHEET NO.
55	D5Safety-2	McLEAN	79	1
FED. ROAD DIST. NO.	ILLINOIS	CONTRACT NO. 70745		

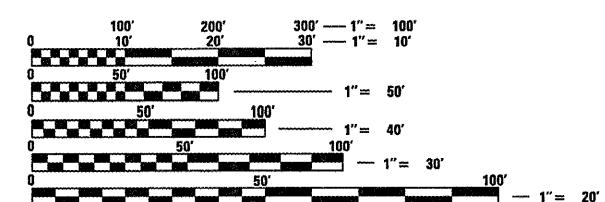
FOR INDEX OF SHEETS, SEE SHEET NO. 2  
 FOR SUMMARY OF QUANTITIES, SEE SHEET NO. 5-6



LOCATION OF SECTION INDICATED THUS: - [black rectangle] -

**CURRENT ADT**  
 F. A. I. 55 (I-55) = 24,600 (2008)

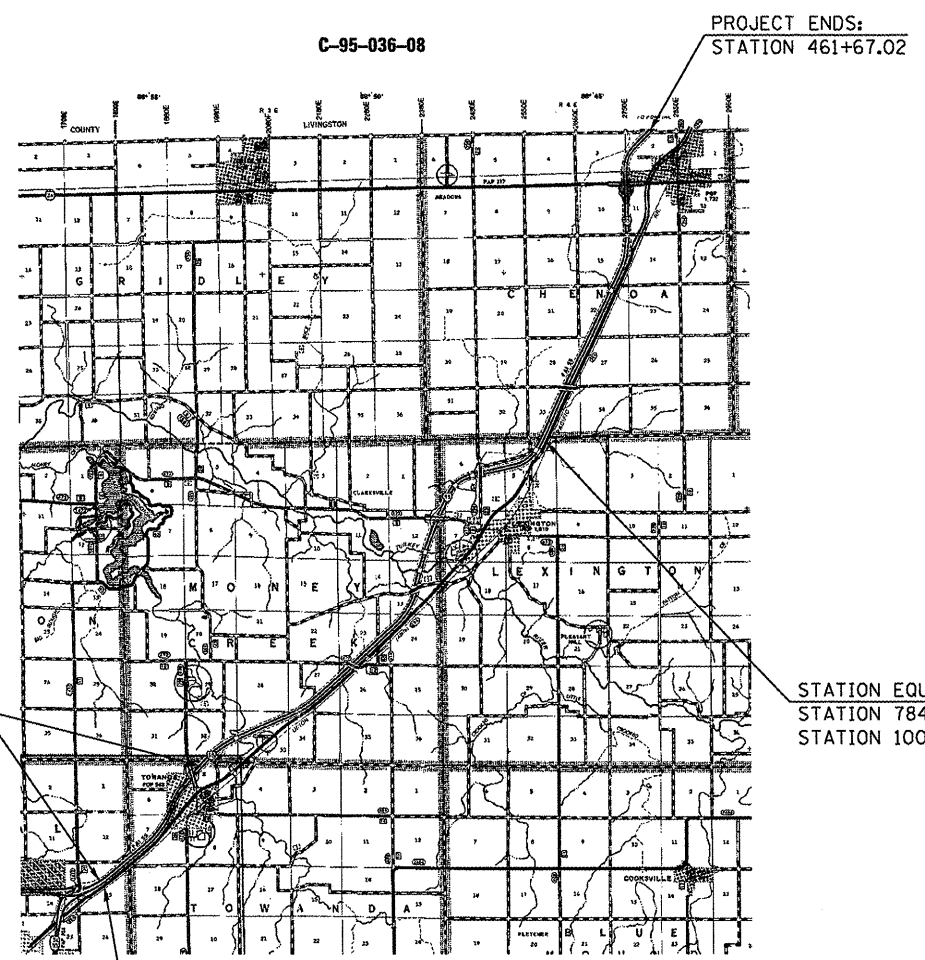
**DESIGN DESIGNATION**  
 N/A



FULL SIZE PLANS HAVE BEEN PREPARED USING STANDARD ENGINEERING SCALES. REDUCED SIZED PLANS WILL NOT CONFORM TO STANDARD SCALES. IN MAKING MEASUREMENTS ON REDUCED PLANS, THE ABOVE SCALES MAY BE USED.

J.U.L.I.E.  
 JOINT UTILITY LOCATION INFORMATION FOR EXCAVATION  
 1-800-892-0123  
 OR 811

PROJECT ENGINEER: KEVIN TRAPP  
 SQUAD LEADER: CHRIS GREESON  
 DESIGNER: MATT BOWER  
 217-465-4181  
 CONTRACT NO. 70745



URBAN LIMITS  
 STATION 132+18.00 TO  
 STATION 279+42.41

PROJECT ENDS:  
 STATION 461+67.02

STATION EQUATION:  
 STATION 784+99.19 (BK.) =  
 STATION 100+00.00 (AH.)

PROJECT BEGINS:  
 STATION 132+18.00

GROSS LENGTH = 101,448.21 FT. = 19.214 MILES  
 NET LENGTH = 101,448.21 FT. = 19.214 MILES

STATE OF ILLINOIS  
 DEPARTMENT OF TRANSPORTATION  
 DIVISION OF HIGHWAYS

SUBMITTED DEC 16 20 08

*[Signature]*  
 DEPUTY DIRECTOR OF HIGHWAYS, REGION ENGINEER

*[Signature]*  
 ENGINEER OF DESIGN AND ENVIRONMENT

*[Signature]*  
 DIRECTOR OF HIGHWAYS, CHIEF ENGINEER

**PRINTED BY THE AUTHORITY  
 OF THE STATE OF ILLINOIS**