

17- STA 2213+18.3
 PROPOSED PIPE CULVERT, TY 1, CS/A, 15"Ø x 38'
 USFL = 661.72 (+00.1 28.3' LT)
 DSFL = 661.32 (+38.1 28.0' LT)
 METAL END SECTIONS 15", 2 EACH
 TRENCH BACKFILL, 1.9 CU YD

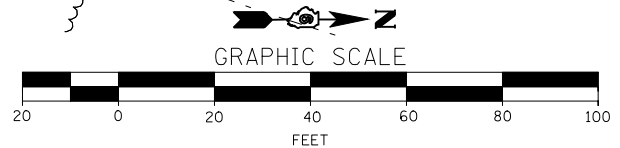
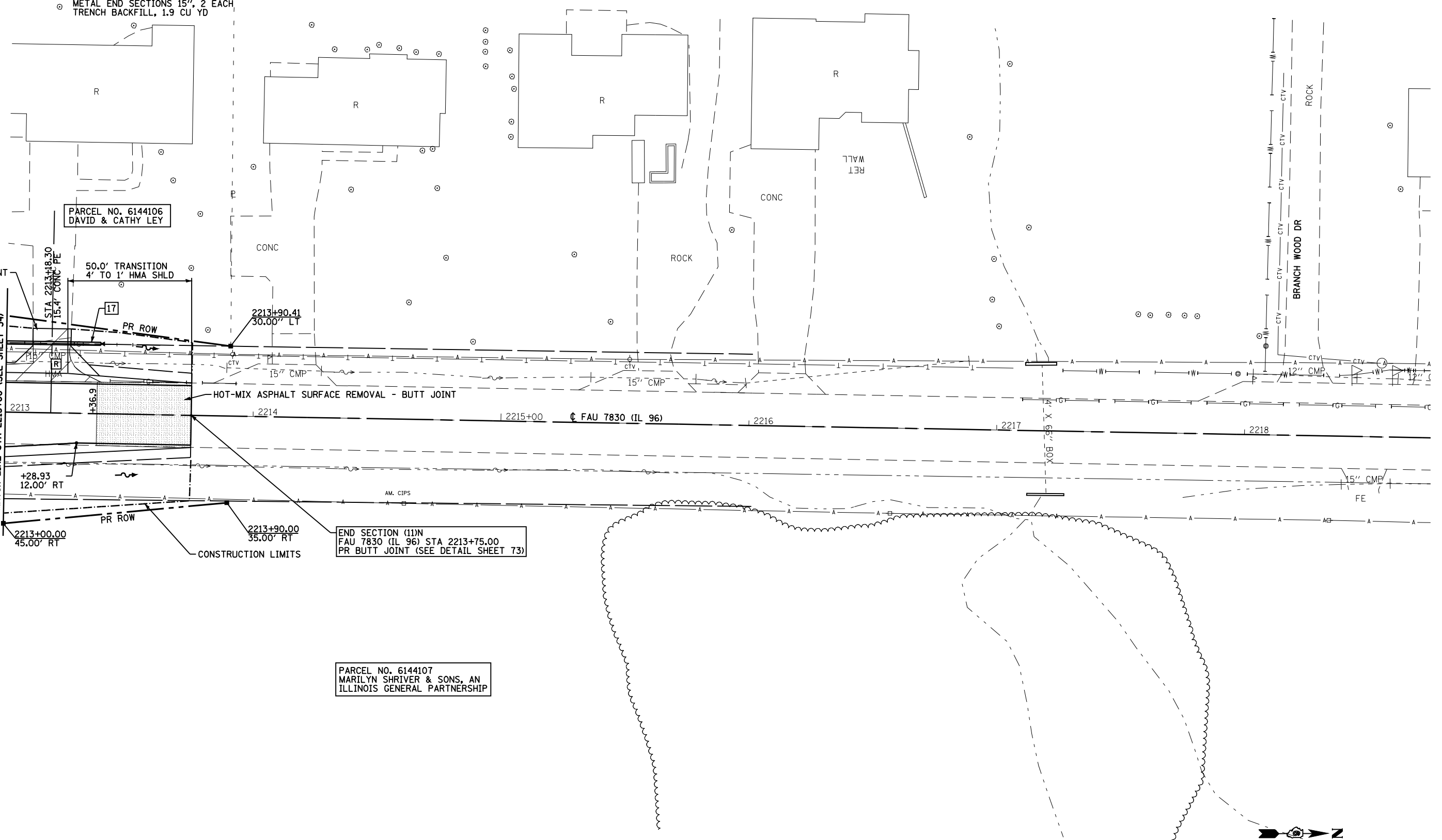
PARCEL NO. 6144106
 DAVID & CATHY LEY

END SECTION (11)N
 FAU 7830 (IL 96) STA 2213+75.00
 PR BUTT JOINT (SEE DETAIL SHEET 73)

PARCEL NO. 6144107
 MARILYN SHRIVER & SONS, AN
 ILLINOIS GENERAL PARTNERSHIP

DRIVEWAY PAVEMENT
 REMOVAL

MATCH LINE STA 2213+00 (SEE SHEET 34)



FILE NAME =	USER NAME = laughlinr1	DESIGNED -	REVISED -
et:\pw\work\pwidot\LAUGHLINRL\0114681\03\PLAN05.dgn		DRAWN -	REVISED -
	PLOT SCALE = 40.0000' / IN.	CHECKED -	REVISED -
	PLOT DATE = Dec-12-2008 02:52:50PM	DATE -	REVISED -

STATE OF ILLINOIS
 DEPARTMENT OF TRANSPORTATION

PLAN VIEW - FAU 7830 (IL 96)
 SCALE: 1"=20' SHEET NO. 10 OF 19 SHEETS STA. 2213+00 TO STA. 2213+75

F.A. RTE.	SECTION	COUNTY	TOTAL SHEETS	SHEET NO.
• - FAS 1597 & FAU 7830	(11)N	ADAMS	117	36
FED. ROAD DIST. NO.	ILLINOIS FED. AID PROJECT	CONTRACT NO. 72817		