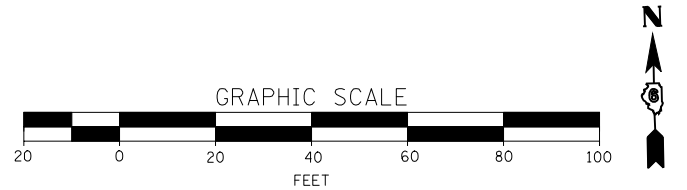
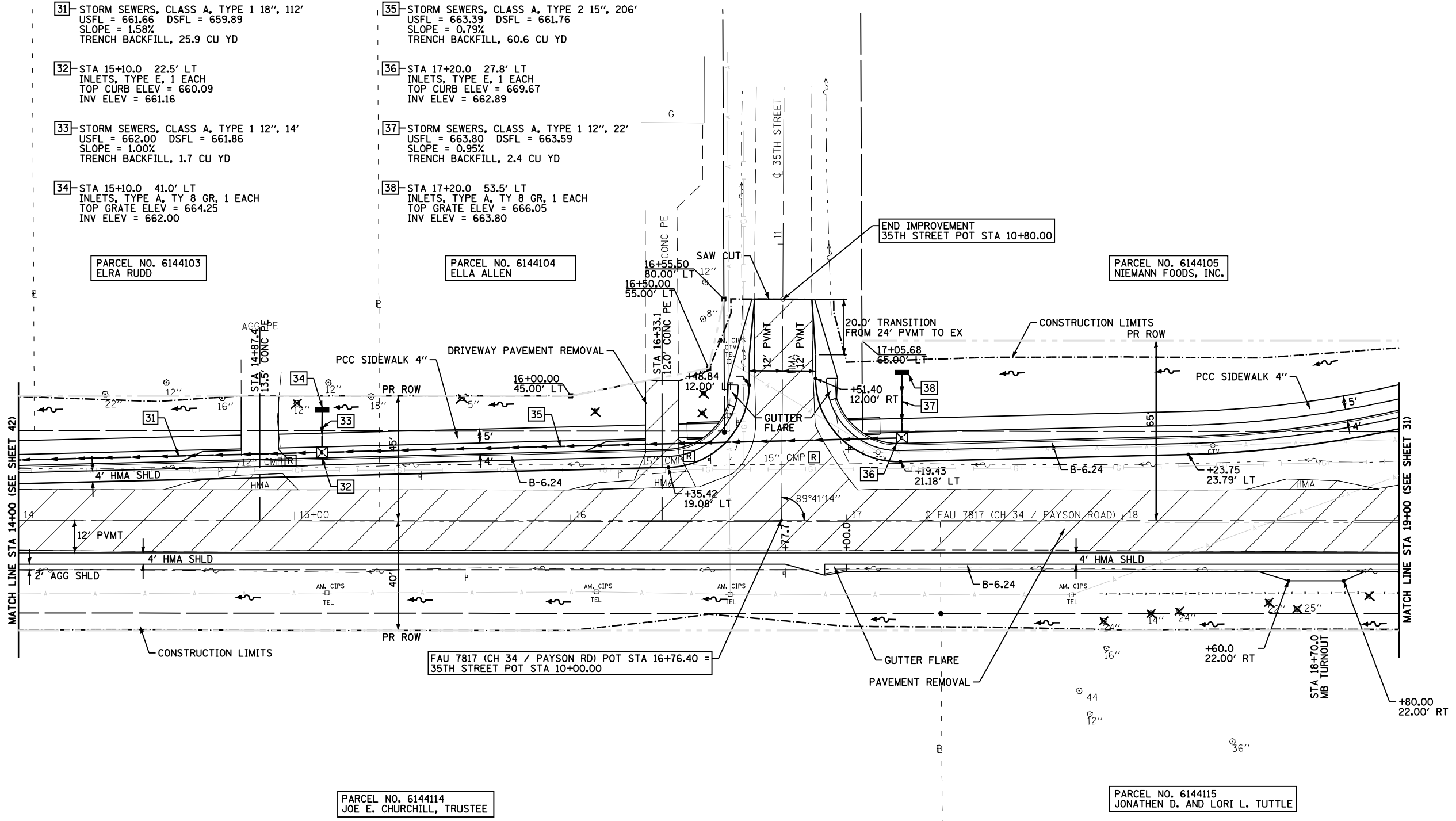


- 31- STORM SEWERS, CLASS A, TYPE 1 18", 112'
USFL = 661.66 DSFL = 659.89
SLOPE = 1.58%
TRENCH BACKFILL, 25.9 CU YD
- 32- STA 15+10.0 22.5' LT
INLETS, TYPE E, 1 EACH
TOP CURB ELEV = 660.09
INV ELEV = 661.16
- 33- STORM SEWERS, CLASS A, TYPE 1 12", 14'
USFL = 662.00 DSFL = 661.86
SLOPE = 1.00%
TRENCH BACKFILL, 1.7 CU YD
- 34- STA 15+10.0 41.0' LT
INLETS, TYPE A, TY 8 GR, 1 EACH
TOP GRATE ELEV = 664.25
INV ELEV = 662.00

- 35- STORM SEWERS, CLASS A, TYPE 2 15", 206'
USFL = 663.39 DSFL = 661.76
SLOPE = 0.79%
TRENCH BACKFILL, 60.6 CU YD
- 36- STA 17+20.0 27.8' LT
INLETS, TYPE E, 1 EACH
TOP CURB ELEV = 669.67
INV ELEV = 662.89
- 37- STORM SEWERS, CLASS A, TYPE 1 12", 22'
USFL = 663.80 DSFL = 663.59
SLOPE = 0.95%
TRENCH BACKFILL, 2.4 CU YD
- 38- STA 17+20.0 53.5' LT
INLETS, TYPE A, TY 8 GR, 1 EACH
TOP GRATE ELEV = 666.05
INV ELEV = 663.80



FILE NAME =	USER NAME = laughlinr1	DESIGNED -	REVISED -
et:\pw\work\PWIDOT\LAUGHLINRL\0114681\04PLAN09.dgn		DRAWN -	REVISED -
PLOT SCALE = 40.0000' / IN.		CHECKED -	REVISED -
PLOT DATE = Dec-12-2008 02:53:10PM		DATE -	REVISED -

**STATE OF ILLINOIS
DEPARTMENT OF TRANSPORTATION**

PLAN VIEW - FAU 7817 (PAYSON ROAD)
SCALE: 1"=20' SHEET NO. 18 OF 19 SHEETS STA. 14+00 TO STA. 19+00

F.A. RTE.	SECTION	COUNTY	TOTAL SHEETS	SHEET NO.
	(11)N	ADAMS	117	44
FAS 1597 & FAU 7830			CONTRACT NO. 72817	
FED. ROAD DIST. NO. ILLINOIS FED. AID PROJECT				