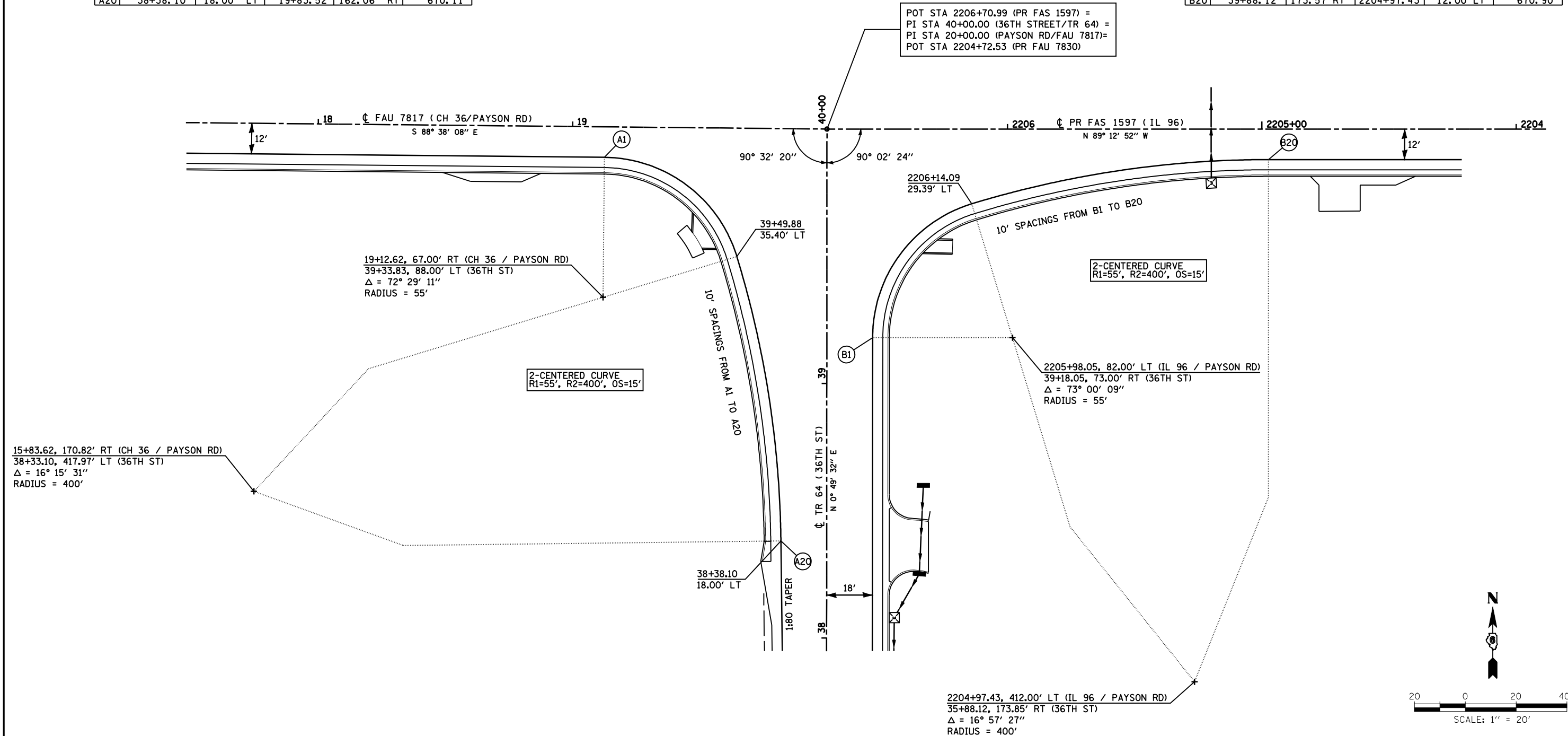


	TR 64 (36TH ST)		FAU 7817 (CH 36/PAYSON RD)		ELEVATION
A1	39+88.82	87.48' LT	19+12.62	12.00' RT	671.42
A2	39+87.82	77.55' LT	19+22.57	12.91' RT	671.45
A3	39+85.04	67.96' LT	19+32.19	15.60' RT	671.47
A4	39+80.58	59.02' LT	19+41.16	19.98' RT	671.49
A5	39+74.57	51.05' LT	19+49.19	25.92' RT	671.47
A6	39+67.21	44.29' LT	19+56.02	33.20' RT	671.43
A7	39+58.76	38.98' LT	19+61.41	41.61' RT	671.38
A8	39+49.48	35.27' LT	19+65.20	50.85' RT	671.32
A9	39+39.88	32.48' LT	19+68.08	60.42' RT	671.25
A10	39+30.21	29.94' LT	19+70.72	70.07' RT	671.19
A11	39+20.48	27.63' LT	19+73.12	79.78' RT	671.12
A12	39+10.70	25.57' LT	19+75.27	89.54' RT	671.05
A13	39+00.86	23.75' LT	19+77.18	99.36' RT	670.97
A14	38+90.99	22.18' LT	19+78.84	109.22' RT	670.87
A15	38+81.08	20.86' LT	19+80.26	119.12' RT	670.76
A16	38+71.13	19.78' LT	19+81.43	129.05' RT	670.63
A17	38+61.17	18.96' LT	19+82.35	139.01' RT	670.49
A18	38+51.19	18.38' LT	19+83.02	148.98' RT	670.33
A19	38+41.19	18.05' LT	19+83.44	158.97' RT	670.16
A20	38+38.10	18.00' LT	19+83.52	162.06' RT	670.11

	TR 64 (36TH ST)		FAU 7817 (CH 36/PAYSON RD)		ELEVATION
B1	39+18.05	18.00 RT	2206+53.05	81.96 LT	671.08
B2	39+28.00	18.91 RT	2206+52.14	72.02 LT	671.16
B3	39+37.62	21.60 RT	2206+49.44	62.40 LT	671.24
B4	39+46.59	25.98 RT	2206+45.05	53.43 LT	671.31
B5	39+54.62	31.92 RT	2206+39.11	45.41 LT	671.34
B6	39+61.45	39.20 RT	2206+31.81	38.58 LT	671.33
B7	39+66.84	47.61 RT	2206+23.41	33.19 LT	671.30
B8	39+70.63	56.85 RT	2206+14.16	29.41 LT	671.27
B9	39+73.43	66.45 RT	2206+04.56	26.62 LT	671.24
B10	39+76.00	76.11 RT	2205+94.90	24.06 LT	671.21
B11	39+78.32	85.84 RT	2205+85.17	21.74 LT	671.18
B12	39+80.40	95.62 RT	2205+75.39	19.67 LT	671.15
B13	39+82.23	105.45 RT	2205+65.55	17.84 LT	671.12
B14	39+83.82	115.32 RT	2205+55.68	16.26 LT	671.09
B15	39+85.16	125.23 RT	2205+45.77	14.93 LT	671.06
B16	39+86.25	135.17 RT	2205+35.83	13.85 LT	671.03
B17	39+87.09	145.14 RT	2205+25.86	13.01 LT	671.00
B18	39+87.68	155.12 RT	2205+15.88	12.43 LT	670.97
B19	39+88.03	165.11 RT	2205+05.89	12.09 LT	670.93
B20	39+88.12	173.57 RT	2204+97.43	12.00 LT	670.90



FILE NAME =	USER NAME = laughlinr1	DESIGNED -	REVISED -	<b>STATE OF ILLINOIS DEPARTMENT OF TRANSPORTATION</b>	<b>GEOMETRIC DETAIL IL 96 &amp; PAYSON ROAD</b>		F.A. RTE.	SECTION	COUNTY	TOTAL SHEETS	SHEET NO.	
et:\pw\work\p\WIDOT\LAUGHLINRL\0114681\03	3geometric02.dgn	DRAWN -	REVISED -		SCALE: 1"=20'	SHEET NO. 2 OF 2 SHEETS	STA.	TO STA.	(11)N	ADAMS	117	53
	PLOT SCALE = 40.0000' / IN.	CHECKED -	REVISED -						- FAS 1597 & FAU 7830	CONTRACT NO. 72817		
	PLOT DATE = Dec-12-2008 02:53:42PM	DATE -	REVISED -						FED. ROAD DIST. NO.	ILLINOIS	FED. AID PROJECT	