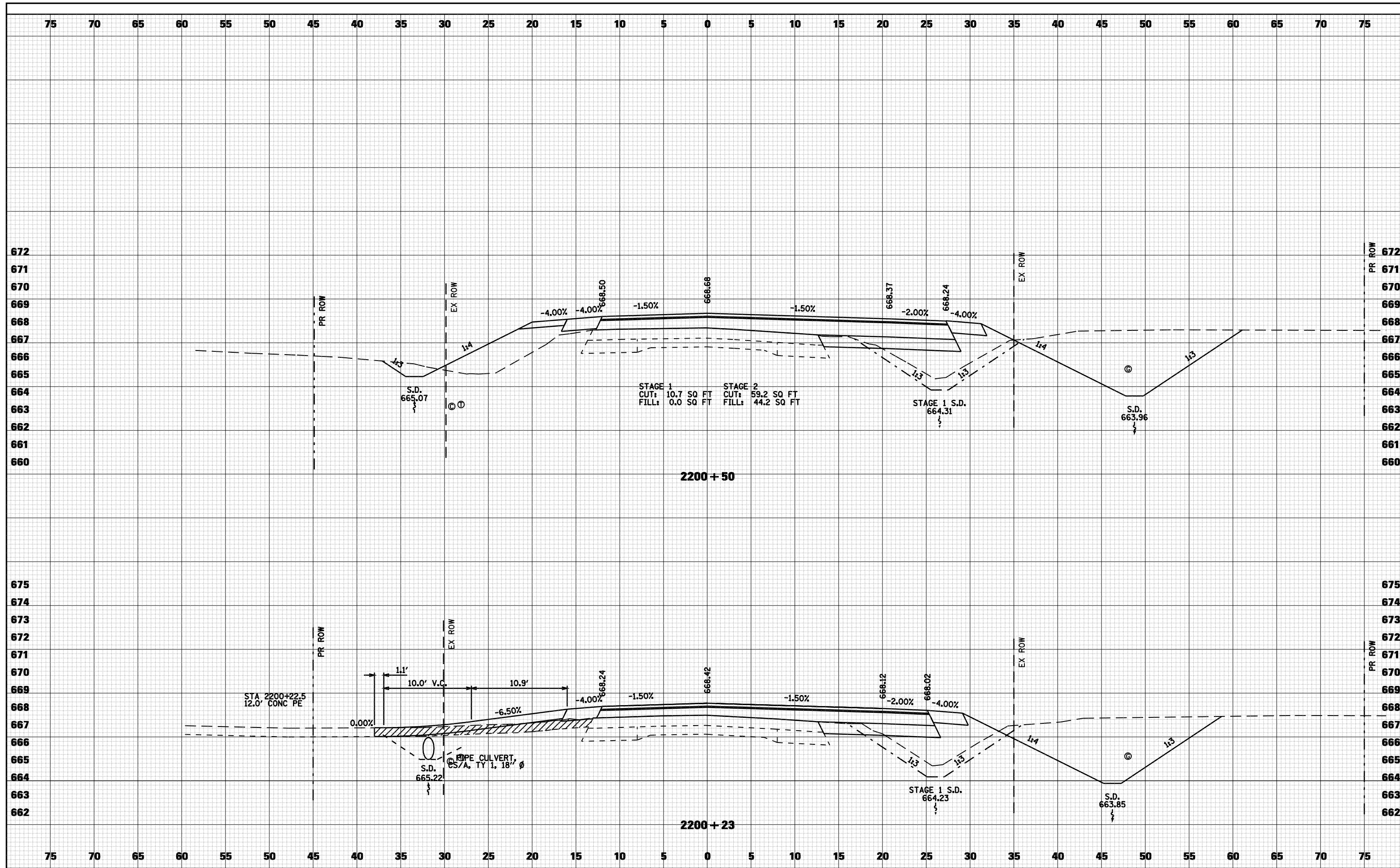


DATE	
BY	
FINAL SURVEY	
PLOTTED	
TEMPLATE	
NOTE BOOK	
AREAS CHECKED	
NO.	

DATE	
BY	
ORIGINAL SURVEY	
NOTE BOOK	
AREAS CHECKED	
NO.	



FILE NAME =	USER NAME = laughlinr1	DESIGNED -	REVISED -	STATE OF ILLINOIS DEPARTMENT OF TRANSPORTATION	CROSS SECTIONS - FAS 1597 (IL 96)	F.A. RTE.	SECTION	COUNTY	TOTAL SHEETS	SHEET NO.
ct:\pwork\PWIDOT\LAUGHLINRL\d0114681\075XSP01\IL96.dgn	PLOT SCALE = 10.0000' / IN.	CHECKED -	REVISED -			• - FAS 1597 & FAU 7830	117	83		
PLOT DATE = Dec-12-2008 03:00:19PM		DRAWN -	REVISED -			FED. ROAD DIST. NO.	ILLINOIS	FED. AID PROJECT		
		CHECKED -	REVISED -			CONTRACT NO. 72817				
					SCALE: 1"=5'	SHEET NO. 9 OF 16 SHEETS		STA. 2200+23 TO STA. 2200+50		