

ROUTE NO.	SECTION	COUNTY	SHEET	SHEET NO.
F.A.I. 53	88-4B-1	MONTGOMERY	145 42	23 SHEETS
FED. AID DIST. NO. 7	ILLINOIS	FED. AID PROJECT		

Contract #72A63

GENERAL NOTES

Fasteners shall be AASHTO M164 Type 1, mechanically galvanized bolts in painted areas and M164 Type 3 in unpainted areas. Bolts $\frac{3}{4}$ in. ϕ , holes $\frac{15}{16}$ in. ϕ , unless otherwise noted.

Calculated weight of structural steel = 102,150 lbs.

All structural steel shall be AASHTO M270 Grade 50W, except expansion joints which shall be AASHTO M270 Grade 36.

No field welding is permitted except as specified in the contract documents.

Reinforcement bars shall conform to the requirements of ASTM A 706 Gr 60. See Special Provisions.

Reinforcement bars designated (E) shall be epoxy coated.

Plan dimensions and details relative to existing plans are subject to nominal construction variations. The Contractor shall field verify existing dimensions and details affecting new construction and make necessary approved adjustments prior to construction or ordering of materials. Such variations shall not be cause for additional compensation for a change in scope of the work, however, the Contractor will be paid for the quantity actually furnished at the unit price bid for the work.

Concrete Sealer shall be applied to the Abutment Seats, Backwall and Abutment Face.

Structural steel shall only be painted for a distance of 7 ft. each way from the deck joints. All structural steel shall be cleaned as specified in the Special Provision for "Surface Preparation and Painting Requirements for Weathering Steel".

All exposed structural steel of the bearings shall be cleaned and shop painted as specified in the Special Provision for "Surface Preparation and Painting Requirements for Weathering Steel".

Layout of slope protection system may be varied in the field to suit ground conditions as directed by the Engineer.

All cross frames or diaphragms shall be installed as steel is erected and secured with erection pins and bolts except as otherwise noted. Individual cross frames or diaphragms at supports may be temporarily disconnected to install bearing anchor rods.

Load carrying components designated "NTR" shall conform to the Supplemental Requirements for Notch Toughness, Zone 2.

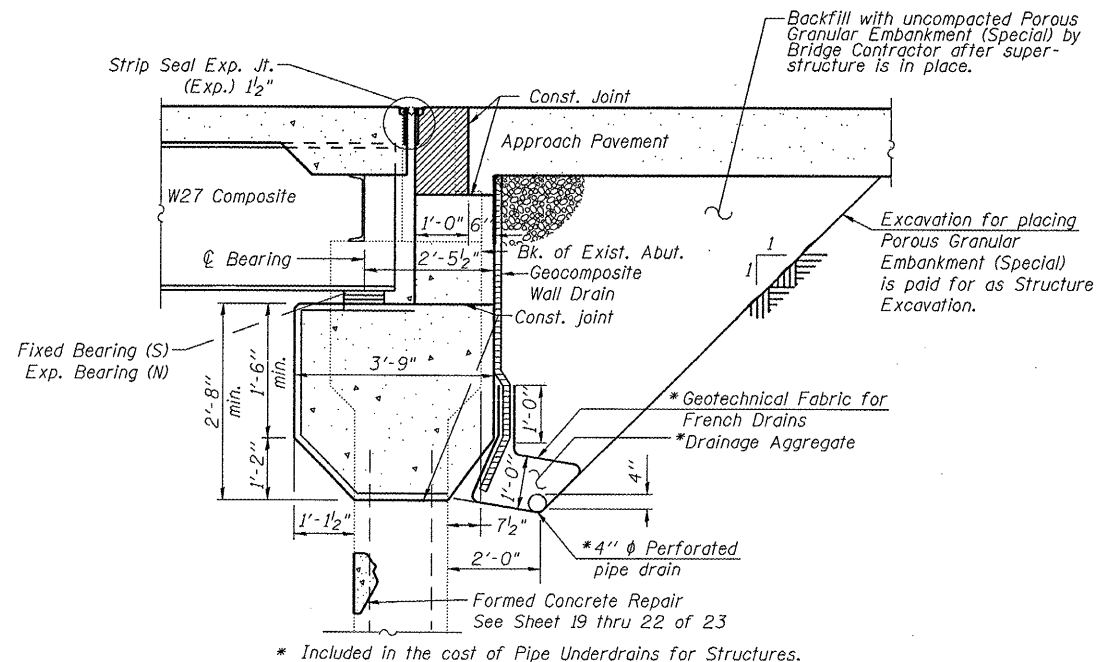
If the Contractor's procedures for existing beam removal or placement of new beams involves placement of heavy equipment on the existing deck beams, a detailed procedure shall be submitted to the Engineer for approval. The procedure shall include calculations sealed by an Illinois Licensed Structural Engineer, verifying the structural adequacy of the beams for the proposed loads. Cost included with Removal of Existing Superstructures.

Slipforming of the parapets is not allowed.

Existing name plate shall be cleaned and relocated next to new name plate. Cost included with name plates.

TOTAL BILL OF MATERIAL

ITEM	UNIT	SUPER	SUB	TOTAL
Porous Granular Embankment (Special)	Cu. Yd.		188	188
Stone Riprap, Class A4	Sq. Yd.		1332	1332
Filter Fabric	Sq. Yd.		1332	1332
Removal of Existing Superstructures	Each	2		2
Concrete Removal	Cu. Yd.		115	115
Structure Excavation	Cu. Yd.		193	193
Floor Drains	Each	12		12
Concrete Structures	Cu. Yd.		135	135
Concrete Superstructure	Cu. Yd.	154.9		154.9
Bridge Deck Grooving	Sq. Yd.	488		488
Protective Coat	Sq. Yd.	610		610
Erecting Structural Steel	L. Sum	1		1
Stud Shear Connectors	Each	2940		2940
Reinforcement Bars, Epoxy Coated	Pound	34290	18160	52450
Bar Splicers	Each	160		160
Name Plates	Each	2		2
Preformed Joint Strip Seal	Foot	232		232
Elastomeric Bearing Assembly Type I	Each	14		14
Anchor Bolts, 1"	Each	56		56
Geocomposite Wall Drain	Sq. Yd.		142	142
Pipe Underdrains for Structures 4"	Foot		511	511
Structural Repair of Concrete (Depth Equal to or Less than 5")	Sq. Ft.		407	407
Asbestos Bearing Pad Removal	Each	56		56
Concrete Sealer	Sq. Ft.		2315	2315



SECTION THRU CLOSED ABUTMENT

(Horiz. dim. @ Rt. L's)

Note:

All drainage system components shall extend to 2'-0" from the end of each abutment wall onto retaining wall except an outlet pipe shall extend until intersecting with the side slopes. The pipes shall drain into concrete headwalls. In the median the outlet pipe shall be capped and sealed. Cost included in Pipe Underdrains for Structures 4". (See Article 601.05 of the Standard Specifications and Highway Standard 601101).

ILLINOIS DEPARTMENT OF TRANSPORTATION

GENERAL NOTES & BILL OF MATERIAL

I 55 OVER MACOUPIN CREEK
F.A.I. ROUTE 55 - SEC. 68-4B-1
MONTGOMERY COUNTY
STATION 1066+03.18
STRUCTURE NO. 068-0038 N.B.
STRUCTURE NO. 068-0039 S.B.

DATE: 04-08
 REVISED:

DRAWN BY: MLO
 CHECKED BY: PBB

Rev. 2-17-09