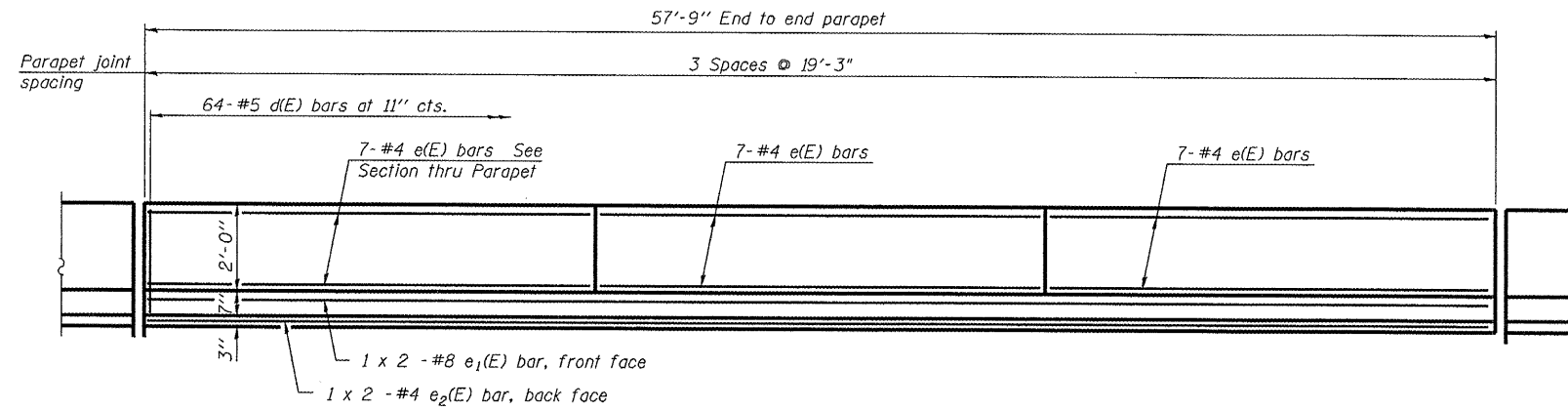
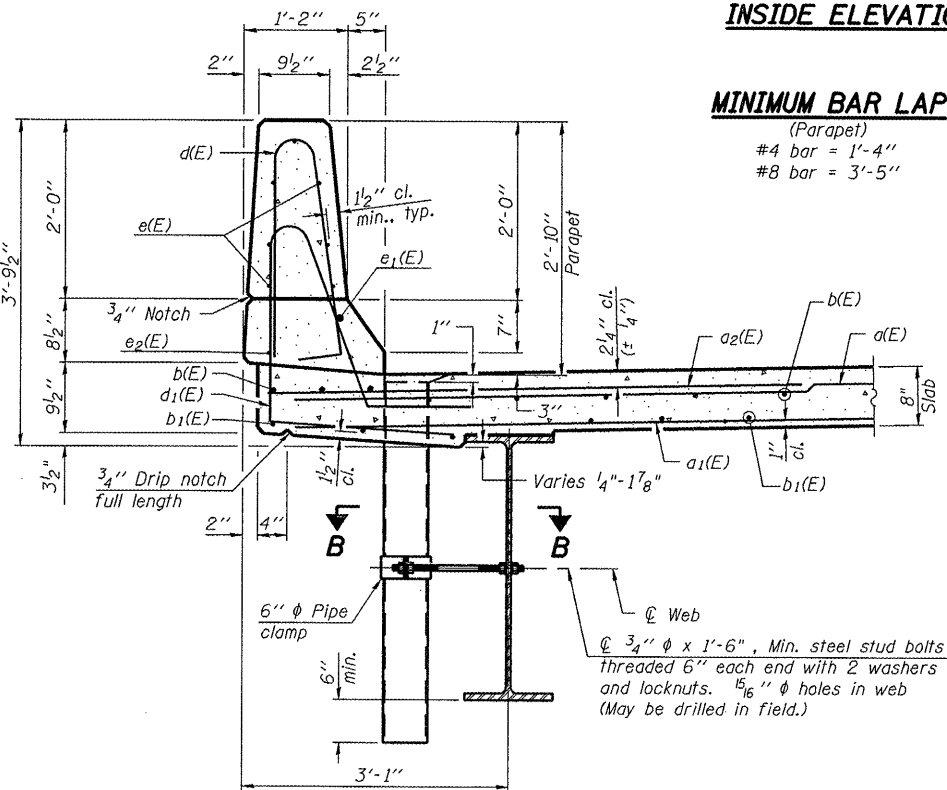


ROUTE NO.	SECTION	COUNTY	JOB NO.	SHEET NO.	SHEET NO. 9 23 SHEETS
F.A.I. 53	68-4B-1	MONTGOMERY	145	49	
FED. RD. DIST. NO. 7		ILLINOIS	FED. AID PROJECT		Contract #72A63



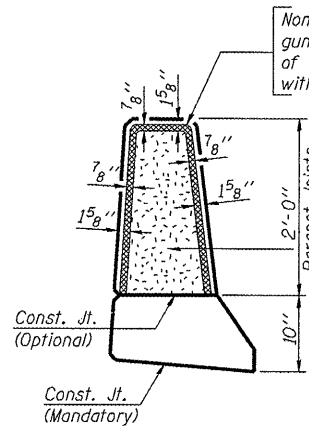
INSIDE ELEVATION OF PARAPET



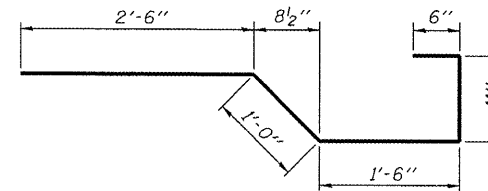
SECTION THRU PARAPET

MINIMUM BAR LAP

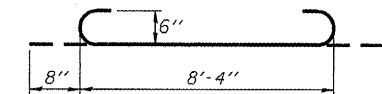
(Parapet)
#4 bar = 1'-4"
#8 bar = 3'-5"



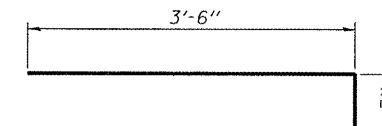
PARAPET JOINT DETAILS



BAR x(E)



a3(E) BAR



BAR x1(E)

**SUPERSTRUCTURE
BILL OF MATERIAL
(BOTH STRUCTURES)**

Bar	No.	Size	Length	Shape
a(E)	152	#5	42'-2"	—
a1(E)	136	#5	42'-1"	—
a2(E)	156	#6	6'-0"	—
a3(E)	72	#6	9'-8"	—
a4(E)	8	#6	27'-0"	—
a5(E)	32	#6	31'-0"	—
b(E)	184	#5	29'-7"	—
b1(E)	216	#5	20'-3"	—
d(E)	256	#5	5'-7"	—
d1(E)	240	#5	7'-9"	—
e(E)	84	#4	18'-11"	—
e1(E)	8	#8	30'-6"	—
e2(E)	8	#4	29'-6"	—
x(E)	160	#5	6'-5"	—
x1(E)	176	#5	4'-1"	—
Reinforcement Bars, Epoxy Coated		Pound	34,290	
Concrete Superstructure		Cu. Yds.	154.9	
Floor Drains		Each	12	
Bridge Deck Grooving		Sq. Yd.	488	
Protective Coat		Sq. Yd.	610	

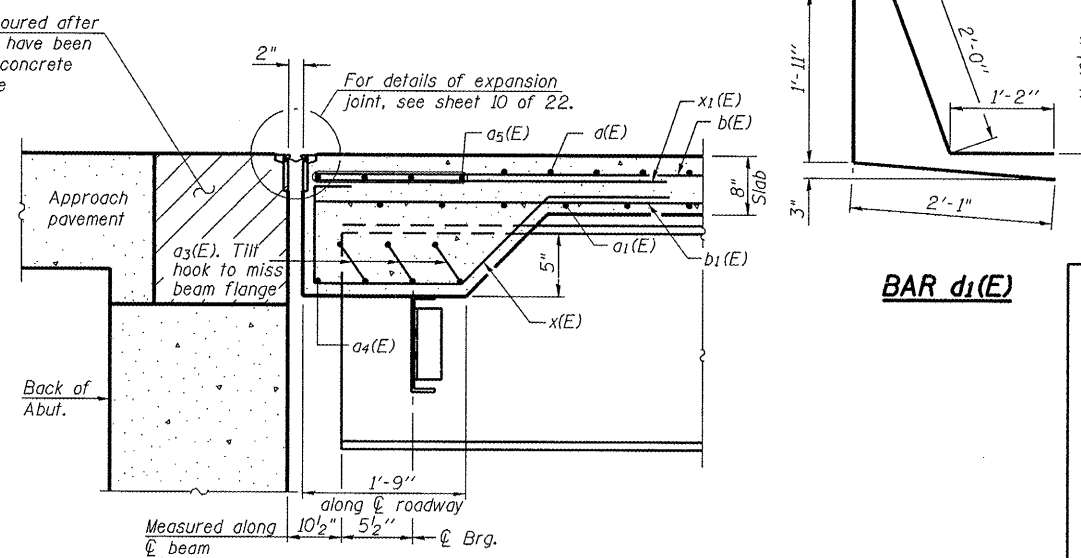
Bars indicated thus 1 x 2 - #5 etc. Indicates 1 line of bars with 2 lengths per line.

ILLINOIS DEPARTMENT OF TRANSPORTATION

**SUPERSTRUCTURE DETAILS
I 55 OVER MACOUPIN CREEK
F.A.I. ROUTE 55 - SEC. 68-4B-1
MONTGOMERY COUNTY
STATION 1066+03.18
STRUCTURE NO. 068-0038 N.B.
STRUCTURE NO. 068-0039 S.B.**

DATE: 04-08
REVISED:

DRAWN BY: MLO
CHECKED BY: PBB



SECTION A-A

Rev. 2-17-09

Notes: Drains shall be located clear of all diaphragms. The floor drains need not be painted. Fiberglass pipe shall conform to ASTM D 2996, with short-time rupture strength hoop tensile stress of 30,000 p.s.i. minimum.