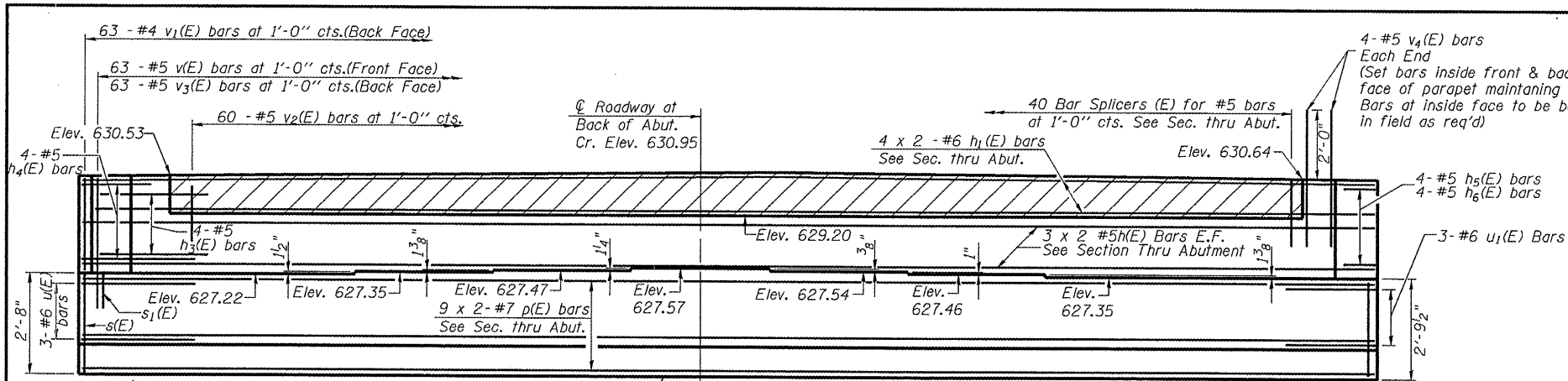
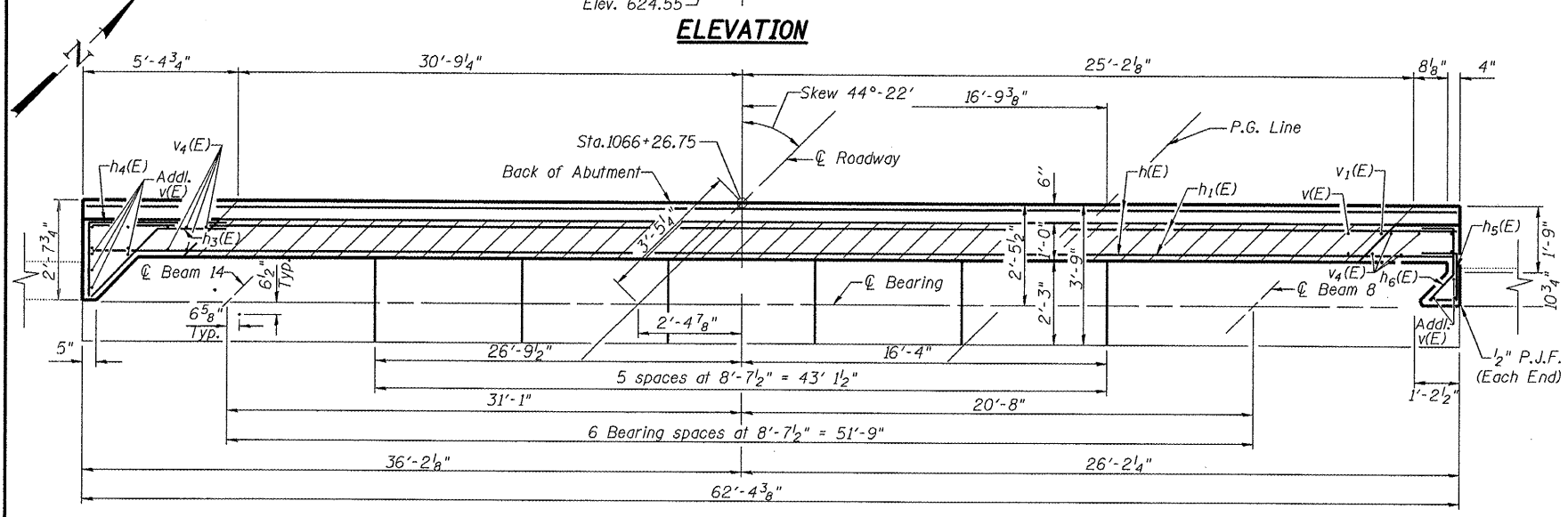


ROUTE NO.	SECTION	COUNTY	POST MILE	SHEET NO.	SHEET NO.
F.A.I. 53	68-4B-1	MONTGOMERY	145	57	23 SHEETS
FED. RD. DIST. NO. 7		ILLINOIS		FED. AID PROJECT	

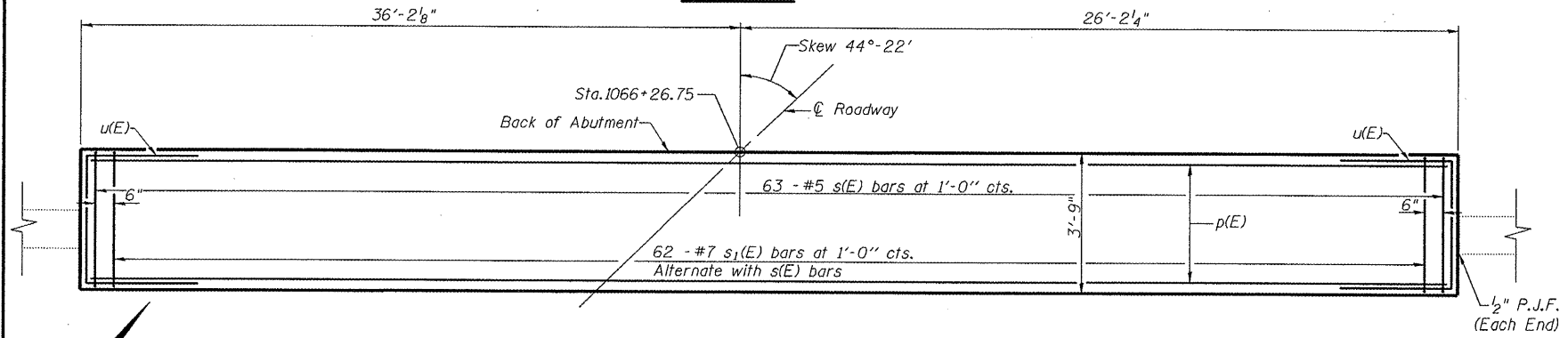
Contract #72A63



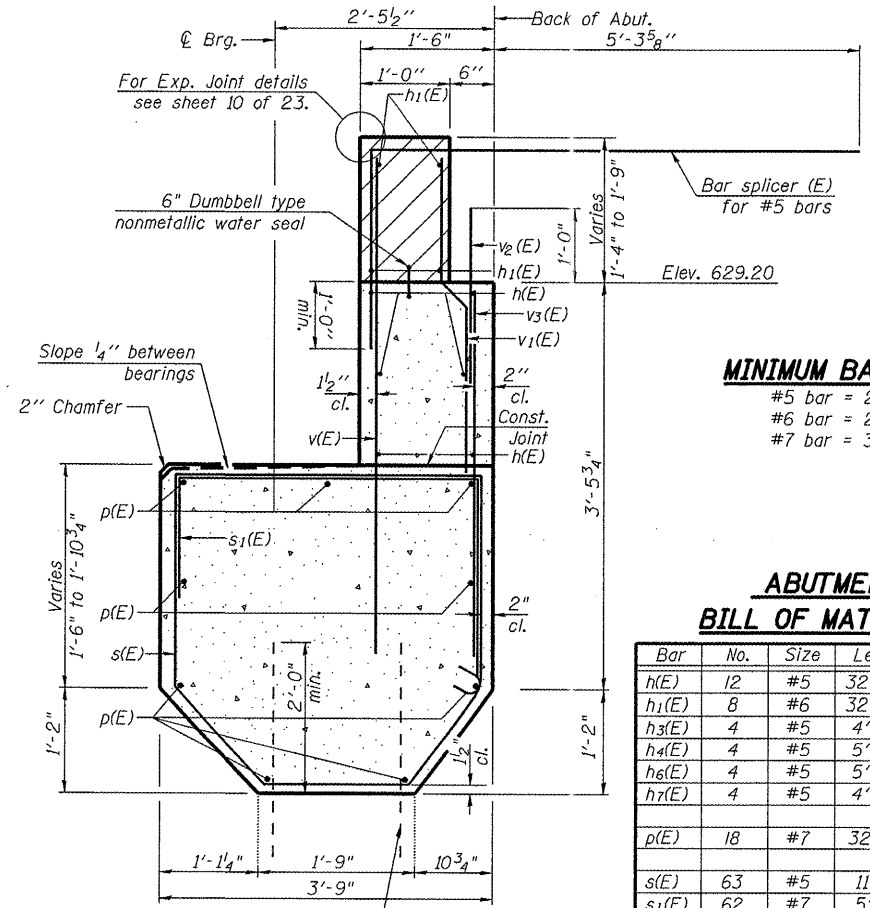
**ELEVATION**



**TOP VIEW**



**PLAN-CAP**



**SEC. THRU ABUT.**

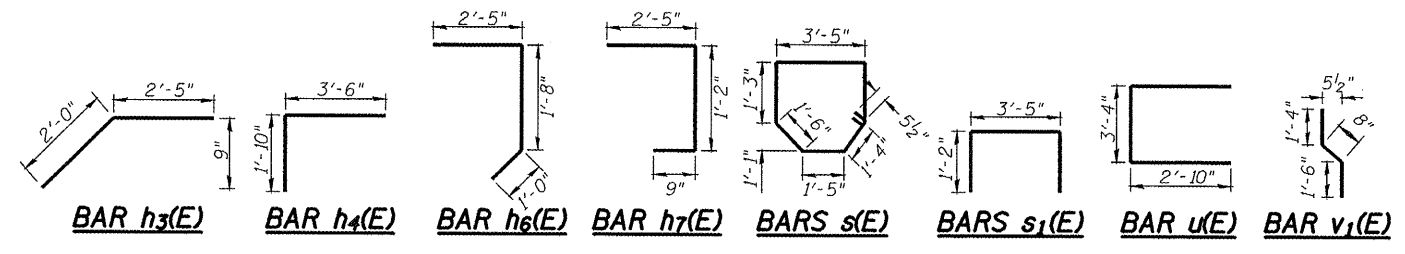
**MINIMUM BAR LAP**

- #5 bar = 2'-5"
- #6 bar = 2'-10"
- #7 bar = 3'-10"

**ABUTMENT BILL OF MATERIAL**

Bar	No.	Size	Length	Shape
h(E)	12	#5	32'-7"	
h1(E)	8	#6	32'-10"	
h3(E)	4	#5	4'-5"	
h4(E)	4	#5	5'-4"	
h6(E)	4	#5	5'-1"	
h7(E)	4	#5	4'-4"	
p(E)	18	#7	32'-11"	
s(E)	63	#5	11'-1"	
s1(E)	62	#7	5'-9"	
u(E)	6	#6	9'-0"	
v(E)	70	#5	5'-4"	
v1(E)	63	#4	3'-6"	
v2(E)	60	#5	2'-0"	
v3(E)	63	#5	3'-1"	
v4(E)	8	#5	4'-0"	
Structure Excavation		Cu. Yd.	50	
Concrete Structures		Cu. Yd.	32	
Reinforcement Bars, Epoxy Coated		Pound	4510	
Bar Splicers		Each	40	
Concrete Sealer		Sq. Ft.	583	

For details of Bar Splicers, see sheet 13 of 23.  
 Bars indicated thus 9x2-#7 etc. indicates 9 lines of bars with 2 lengths per line.



**Notes:**  
 Hatched area to be poured after superstructure false work has been removed. Quantity of concrete included with Concrete Superstructure.  
 Space reinforcement in cap to miss anchor bolts. Pour steps monolithically with cap.  
 All exposed corners shall have a 3/4" chamfer (typ.)  
 The bar splicer is to be placed parallel to the approach pavement reinforcement.

Rev. 2-17-09

ILLINOIS DEPARTMENT OF TRANSPORTATION

**SOUTHBOUND NORTH ABUTMENT DETAILS**  
**I 55 OVER MACOUPIN CREEK**  
**F.A.I. ROUTE 55 - SEC. 68-4B-1**  
**MONTGOMERY COUNTY**  
**STATION 1066+03.18**  
**STRUCTURE NO. 068-0038 N.B.**  
**STRUCTURE NO. 068-0039 S.B.**

DATE: 04-08 DRAWN BY: MLO  
 REVISED: CHECKED BY: PBB