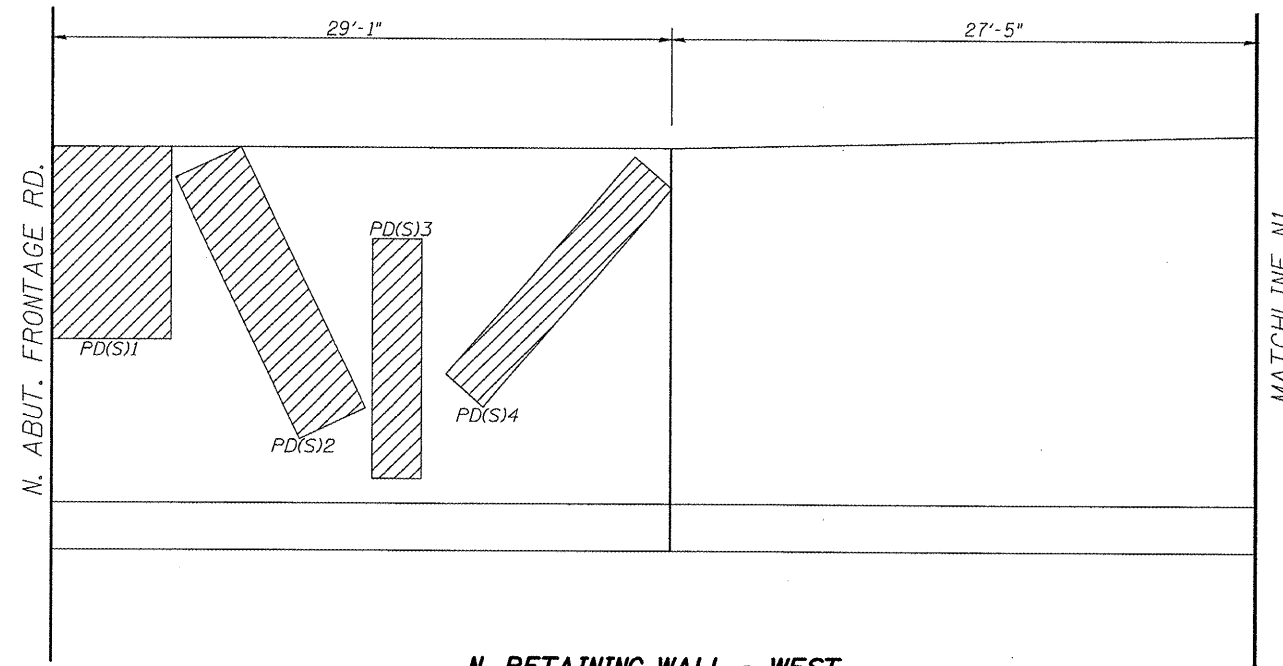
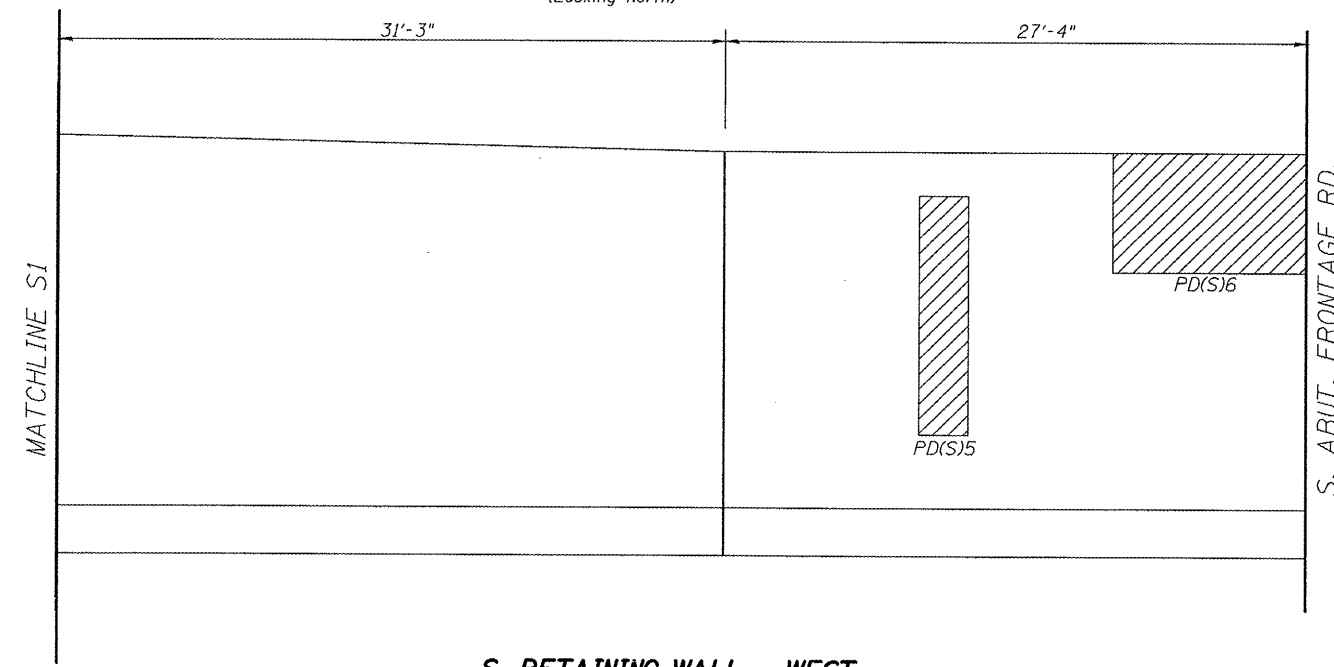


ROUTE NO.	SECTION	COUNTY	STATION	SHEET NO.	SHEET NO. 19
F.A.I. 53	68-4B-1	MONTGOMERY	145	59	23 SHEETS
FED. RD. DIST. NO. 7	ILLINOIS	FED. AID PROJECT			

Contract #72A63



N. RETAINING WALL - WEST
(Looking North)



S. RETAINING WALL - WEST
(Looking South)

Structural Repair of Concrete
(Depth Equal to or Less than 5")

Patch	Length (Ft)	Width (Ft)	Area (Sq Ft)
PD(S)1	8	5	40
PD(S)2	12	3	36
PD(S)3	10	2	20
PD(S)4	12	2	24
PD(S)5	10	2	20
PD(S)6	5	8	40
PD(S)7	10	2	20
PD(S)8	15	3	45
PD(S)9	10	10	100
PD(S)10	6	2	12
PD(S)11	10	2	20
PD(S)12	10	3	30

BILL OF MATERIAL

ITEM	UNIT	TOTAL
Structural Repair of Concrete (Depth Equal to or Less Than 5")	Sq. Ft.	407

LEGEND

 Structural Repair of Concrete
(Depth Equal To or Less Than 5")

Rev. 2-17-09

ILLINOIS DEPARTMENT OF TRANSPORTATION
ABUTMENT & RETAINING WALL
CONCRETE REPAIR SHEET 1 OF 4
I 55 OVER MACOUPIN CREEK
F.A.I. ROUTE 55 - SEC. 68-4B-1
MONTGOMERY COUNTY
STATION 1066+03.18
STRUCTURE NO. 068-0038 N.B.
STRUCTURE NO. 068-0039 S.B.

DATE: 04-08
REVISED:

DRAWN BY: MLO
CHECKED BY: PBB