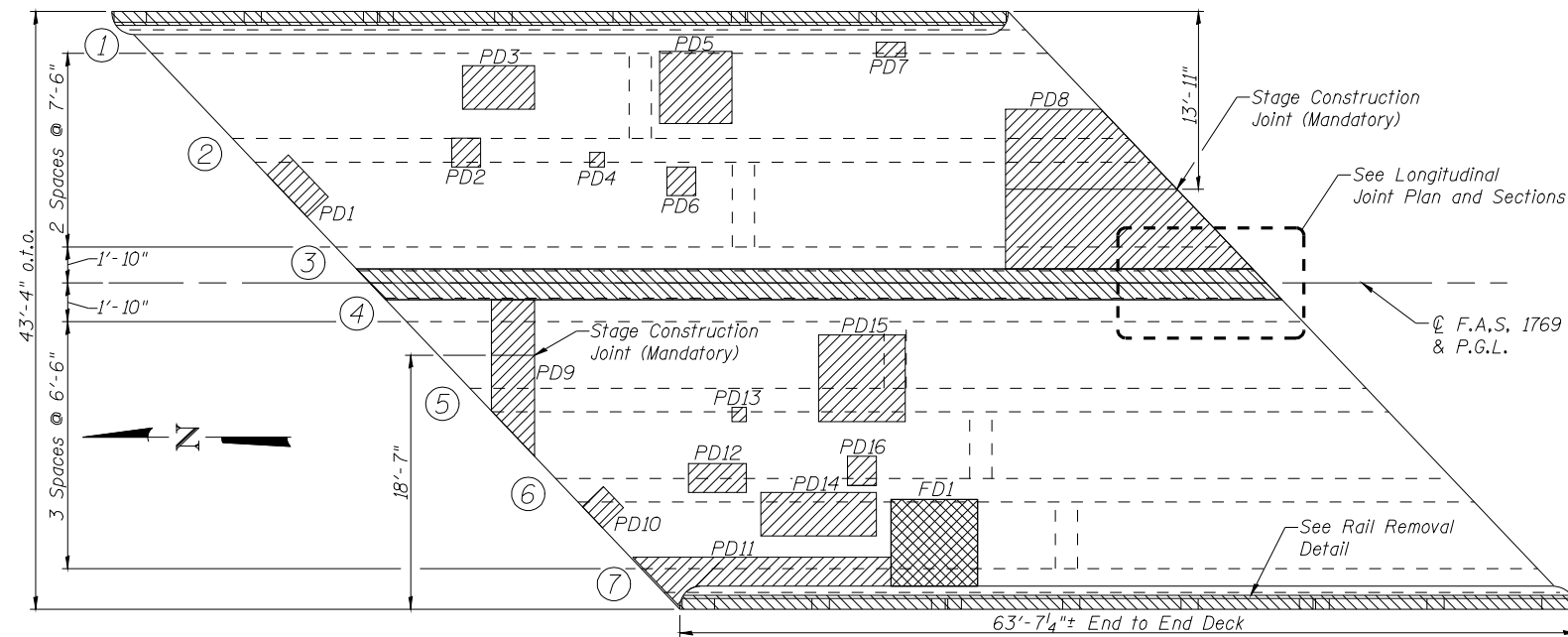


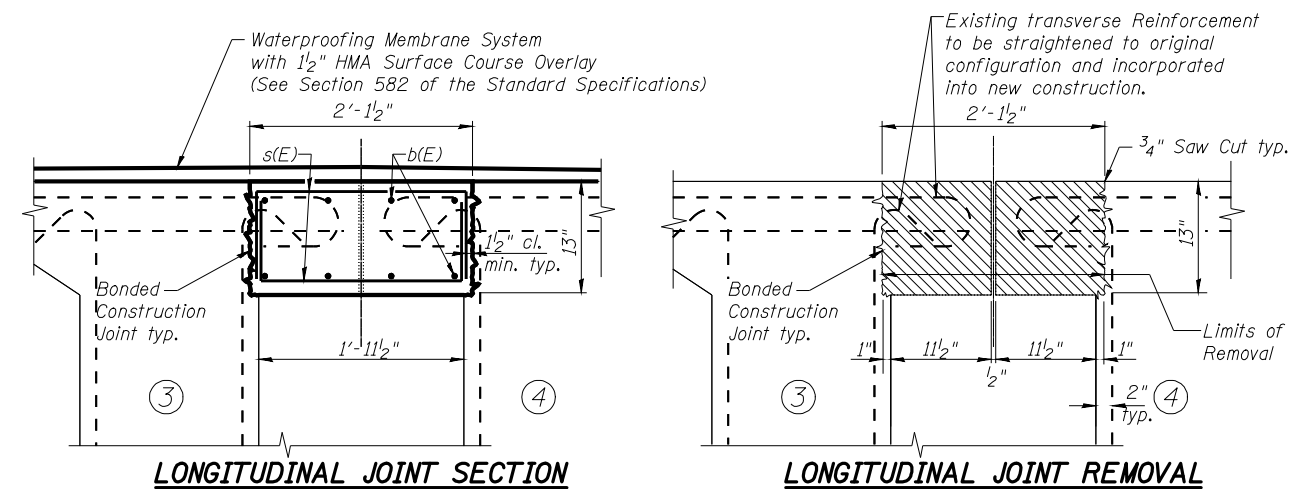
STATE OF ILLINOIS
DEPARTMENT OF TRANSPORTATION

ROUTE NO.	SECTION	COUNTY	TOTAL SHEETS	SHEET NO.	SHEET NO. 2 3 SHEETS
F.A.S. 1769	111B-2	MONTGOMERY	145	65	
FED. ROAD DIST. NO. 7	ILLINOIS	FED. AID PROJECT-			

Contract #72A63



DECK PATCHING AND REMOVAL PLAN



LONGITUDINAL JOINT SECTION

LONGITUDINAL JOINT REMOVAL

Deck Slab Repair (Partial Depth)

Patch	Length (Ft)	Width (Ft)	Area (Sq Yd)
PD1	2	4	0.89
PD2	2	2	0.44
PD3	5	3	1.67
PD4	1	1	0.11
PD5	5	5	2.78
PD6	2	2	0.44
PD7	2	1	0.22
PD8	12	11	14.67
PD9	3	11	3.67
PD10	2	2	0.44
PD11	18	2	4.00
PD12	4	2	0.89
PD13	1	1	0.11
PD14	8	3	2.67
PD15	6	6	4.00
PD16	2	2	0.44

MINIMUM BAR LAP

#5 Bar = 1'-8"

BILL OF MATERIAL

Bar	No.	Size	Length	Shape
b(E)	16	#5	33'-2"	—
b ₁ (E)	4	#5	2'-7"	—
s(E)	180	#5	3'-6"	—
s ₁ (E)	4	#5	4'-3"	—
Concrete Removal			Cu. Yds.	8.0
Reinforcement Bars, Epoxy Coated			Pound	1240
Concrete Superstructure			Cu. Yds.	5.5
Deck Slab Repair (Partial)			Sq. Yd.	37.4
Deck Slab Repair (Full Depth, Type II)			Sq. Yd.	4.0
Waterproofing Membrane System			Sq. Yd.	289

Bars indicated thus 4 x 2 - #5 etc. indicates 4 lines of bars with 2 lengths per line.

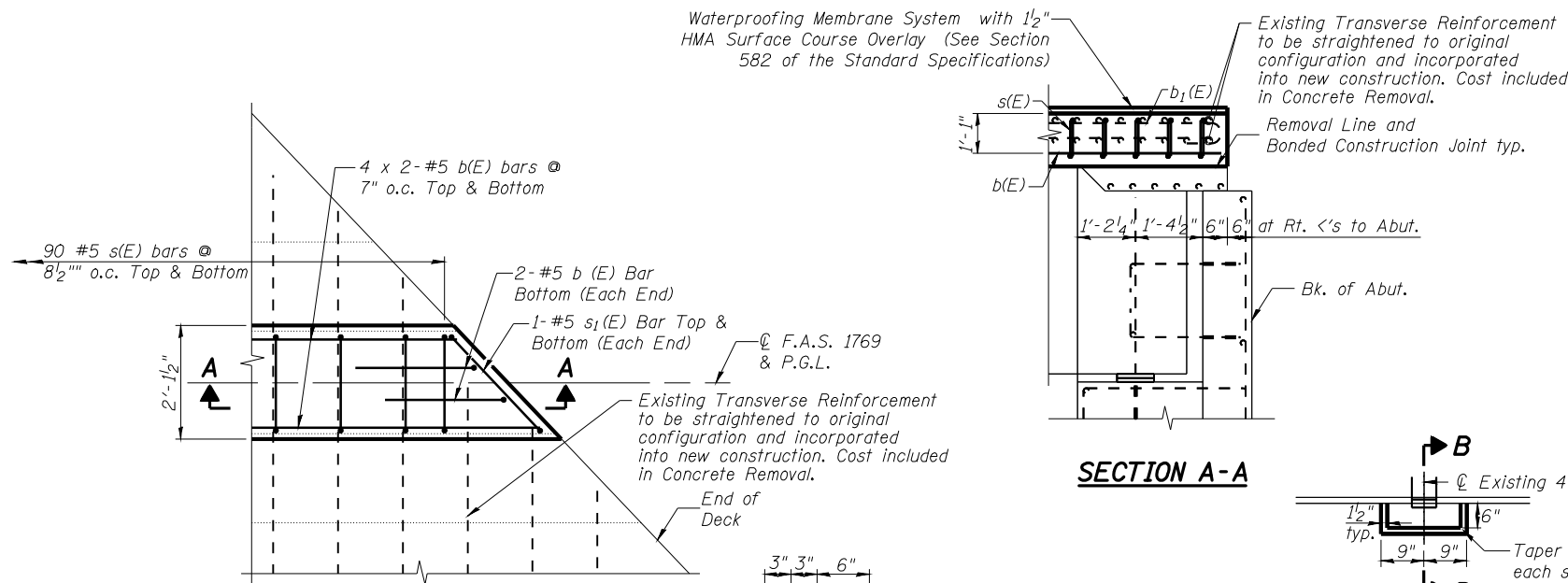
Deck Slab Repair (Full Depth)

Patch	Length (Ft)	Width (Ft)	Area Type I (Sq Yd)	Area Type II (Sq Yd)
FD1	6	6	4.00	

LEGEND

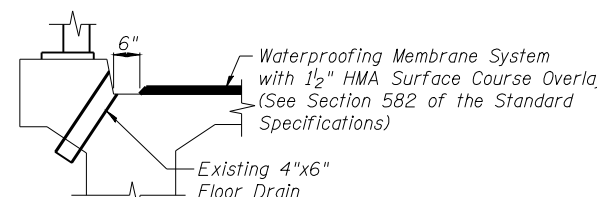
- Deck Slab Repair (Full Depth) - Sq. Yd.
- Deck Slab Repair (Partial Depth) - Sq. Yd.
- Concrete Removal

Note: 1. Areas of deck slab repairs shown are estimated. The engineer shall record the actual deck slab repair areas in the "As Built" plans.



SECTION A-A

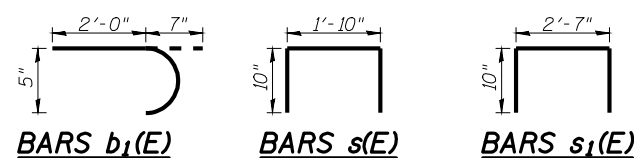
OVERLAY TREATMENT AT FLOOR DRAINS



SECTION B-B

LONGITUDINAL JOINT PLAN

RAIL REMOVAL DETAIL



ILLINOIS DEPARTMENT OF TRANSPORTATION
DECK PATCHING PLAN & DETAILS
W. FR. IL 55 OVER MACOUPIN CREEK
F.A.S. 1769 (FR I-55) - SEC. 111B-2
MONTGOMERY COUNTY
STATION 1067+45.30
STRUCTURE NO. 068-0054

DATE: 02-08
REVISED:

DRAWN BY: MLO
CHECKED BY: PBB