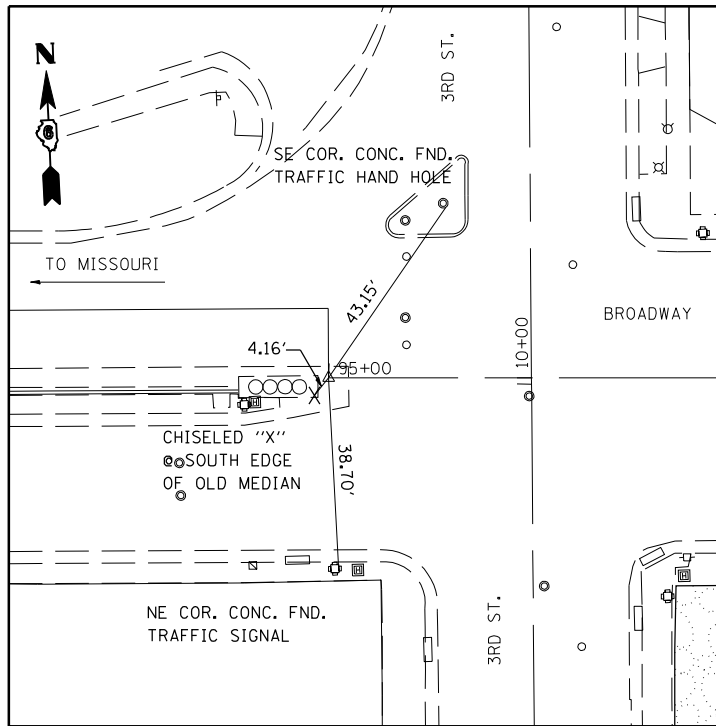


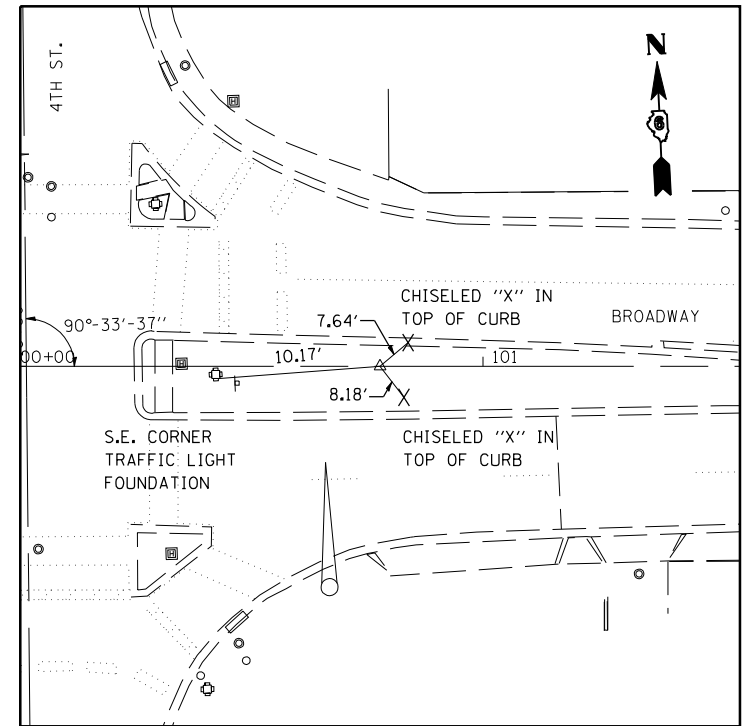
**BENCHMARKS**

BM 44 STA. 104+99.00, 44.57' LT.  
BRASS PLATE, NE CORNER 5th & BROADWAY  
ELEV. = 577.18

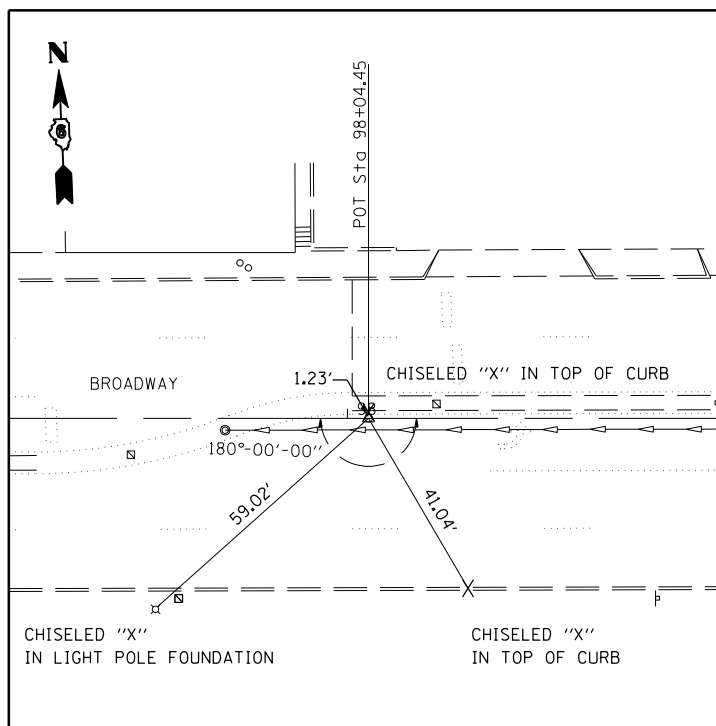
BM 9904 STA. 100+78.58, 0.08' LT.  
STARDRILL IN CHISELED "X"  
ELEV. = 565.22



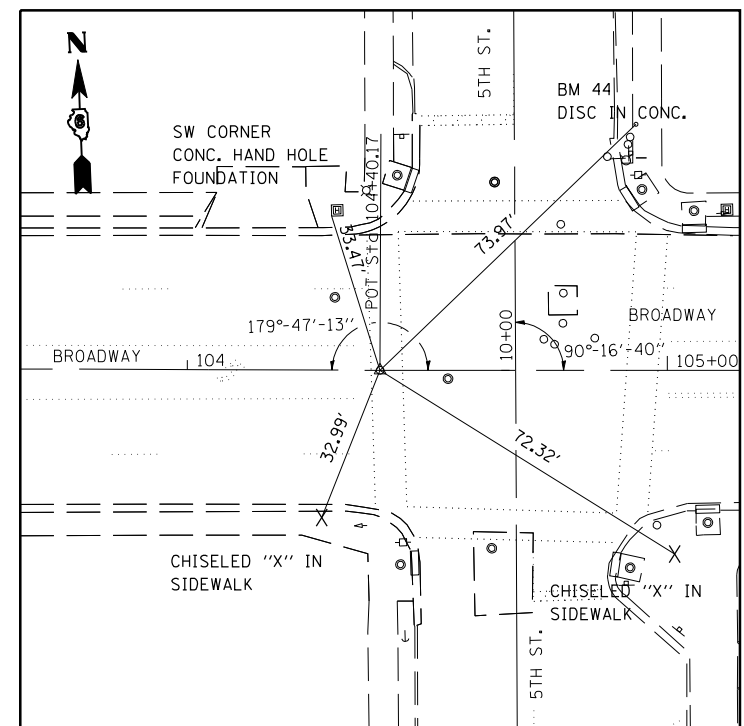
**POT #1104 STA. 95+00.00  
(STARDRILL IN CHISELED "X")**



**BM# 9904 STA. 100+78.58, 0.08' LT.  
STARDRILL IN CHISELED "X"  
ELEV. = 565.22**



**POT #103 STA. 98+04.45  
(PK NAIL IN CHISELED "X")**



**PI #1102 STA. 104+40.17  
(PK NAIL IN CHISELED "X")**

|   |                        |            |           |
|---|------------------------|------------|-----------|
| FILE NAME =   | USER NAME = laughlinr1 | DESIGNED - | REVISED - |
| ct:\pwk\work\PWIDOT\LAUGHLINRL\dms24089\1052407-shr-ATB.dgn |                        | DRAWN -    | REVISED - |
|   |                        | CHECKED -  | REVISED - |
|   |                        | DATE -     | REVISED - |
|   |                        |            |           |

**STATE OF ILLINOIS  
DEPARTMENT OF TRANSPORTATION**

**TIES & BENCHMARKS**

SCALE: SHEET NO. OF SHEETS STA. TO STA.

| F.A. RTE.                                     | SECTION | COUNTY | TOTAL SHEETS       | SHEET NO. |
|---|---------|--------|--------------------|-----------|
| 745   | .       | ADAMS  | 37                 | 12        |
| FED. ROAD DIST. NO. ILLINOIS FED. AID PROJECT |         |        | CONTRACT NO. 72A96 |           |

D-6 INTERSECTION IMPROVEMENT