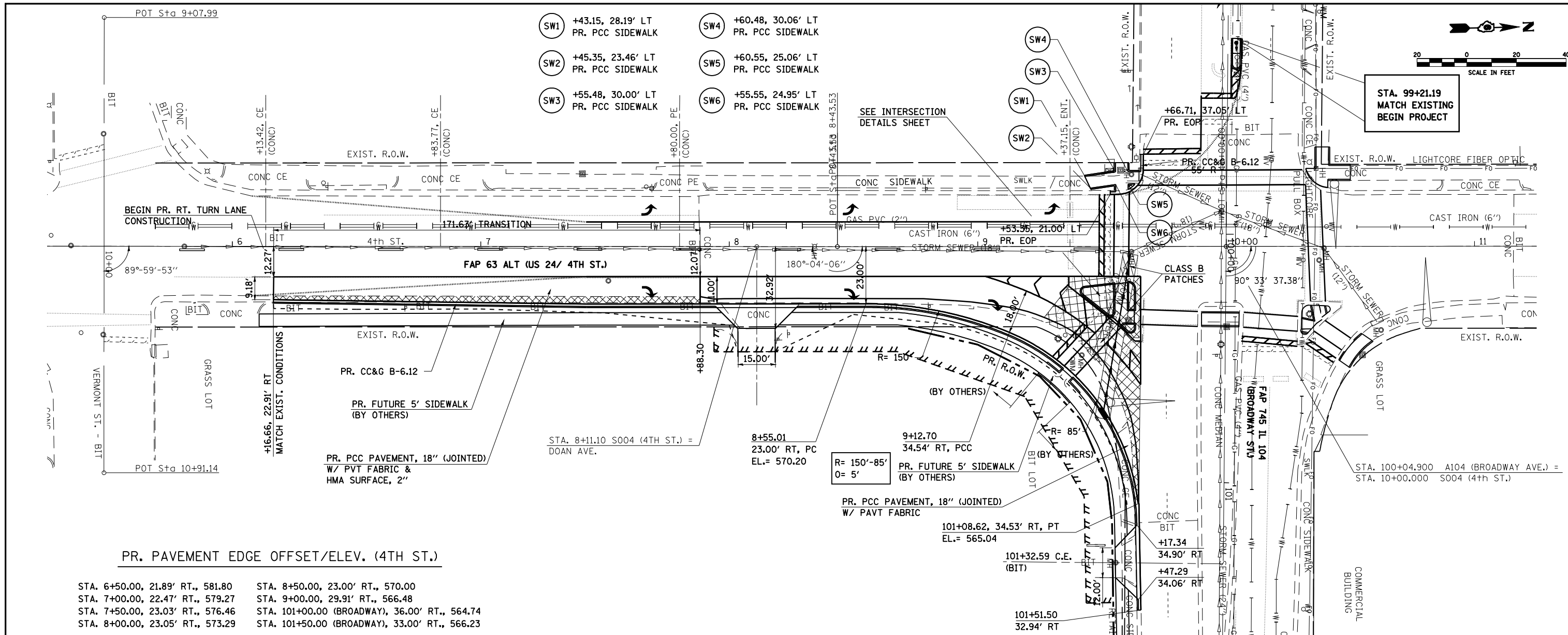


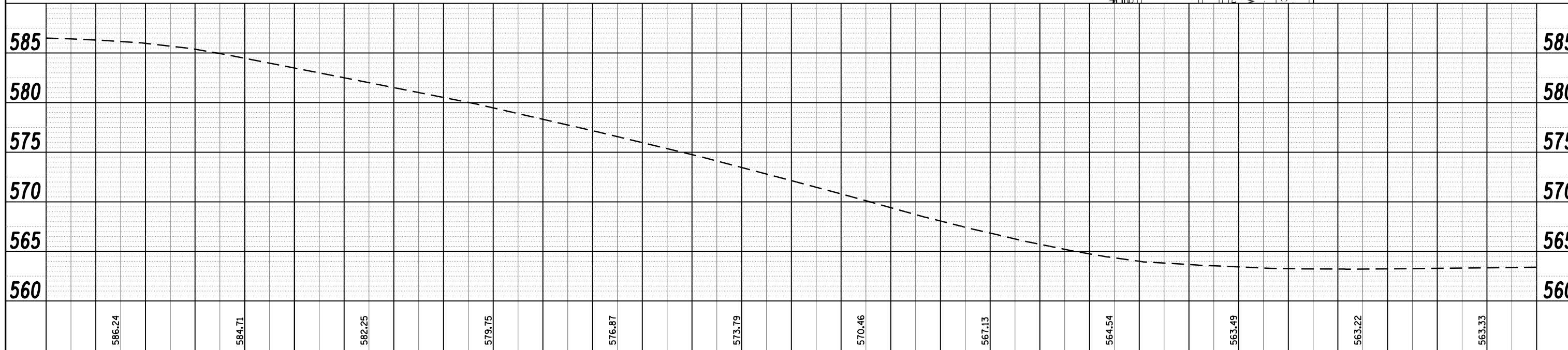
PLAN	SURVEYED	DATE
	PLOTTED	
	CHECKED	
	ALIGNED	
	FILE NAME	
	NO.	

PROFILE	SURVEYED	DATE
	PLOTTED	
	CHECKED	
	STRUCTURE	
	NOTATIS	
	CHFD	
	NO.	



PR. PAVEMENT EDGE OFFSET/ELEV. (4TH ST.)

STA. 6+50.00, 21.89' RT., 581.80	STA. 8+50.00, 23.00' RT., 570.00
STA. 7+00.00, 22.47' RT., 579.27	STA. 9+00.00, 29.91' RT., 566.48
STA. 7+50.00, 23.03' RT., 576.46	STA. 10+00.00 (BROADWAY), 36.00' RT., 564.74
STA. 8+00.00, 23.05' RT., 573.29	STA. 10+50.00 (BROADWAY), 33.00' RT., 566.23



FILE NAME =	USER NAME = laughlinr1	DESIGNED -	REVISED -	STATE OF ILLINOIS DEPARTMENT OF TRANSPORTATION	PLAN & PROFILE - 4TH ST.			F.A.P. RTE. 745	SECTION .	COUNTY Adams	TOTAL SHEETS 37	SHEET NO. 15
ct:\pwork\PWIDOT\LAUGHLINR1\dms24089\d62407-sht-plnprfa0041.dgn	PLOT SCALE = 40.0000' / IN.	DRAWN -	REVISED -		SCALE:	SHEET NO.	OF SHEETS	STA.	TO STA.	CONTRACT NO. 72A96		
	PLOT DATE = Jan-05-2009 09:47:34AM	CHECKED -	REVISED -		FED. ROAD DIST. NO. ILLINOIS FED. AID PROJECT							
		DATE -	REVISED -		• D-6 INTERSECTION IMPROVEMENT							