

- P16 +18.90, 28.00' RT  
PR. EOP (30' R)
- P17 +48.68, 57.78' RT  
PR. EOP (30' R)
- P18 +48.73, 67.78' RT  
PR. EOP

- SW23 +24.17, 33.00' RT  
PR. PCC SIDEWALK
- SW24 +29.02, 38.00' RT  
PR. PCC SIDEWALK  
(22.42' R)
- SW25 +37.97, 46.21' RT  
PR. PCC SIDEWALK  
(22.42' R)
- SW26 +43.84, 52.96' RT  
PR. PCC SIDEWALK

- P5 +33.03, 29.58' LT  
PR. CC&G TY B-6.12(TBC)
- P6 +46.56, 52.89' LT  
PR. CC&G TY B-6.12(TBC)
- P7 +48.19, 43.10' LT  
PR. EOP (15' R)
- P8 +48.15, 52.88' LT  
PR. EOP
- P9 +33.03, 28.00' LT  
PR. EOP (15' R)

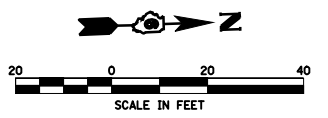
- SW7 +33.03, 37.21' LT  
PR. PCC SIDEWALK
- SW8 +35.83, 37.22' LT  
PR. PCC SIDEWALK
- SW9 +36.87, 39.13' LT  
PR. PCC SIDEWALK
- SW10 +36.86, 51.01' LT  
PR. PCC SIDEWALK
- SW11 +42.97, 45.55' LT  
PR. PCC SIDEWALK
- SW12 +43.84, 40.56' LT  
PR. PCC SIDEWALK

- P12 +10.81, 27.69' RT  
PR. PR EOP  
BEGIN C&G WORK ON  
WEST SIDE OF INLET
- P13 +06.62, 27.71' RT  
PR. PR EOP (15' R)
- P14 +96.76, 53.97' RT  
PR. PR EOP (15' R)
- P15 +00.16, 56.96' RT  
PR. PR EOP

- SW20 +11.18, 37.28' RT  
PR. PCC SIDEWALK
- SW21 +01.48, 37.31' RT  
PR. PCC SIDEWALK
- SW22 +01.54, 56.13' RT  
PR. PCC SIDEWALK

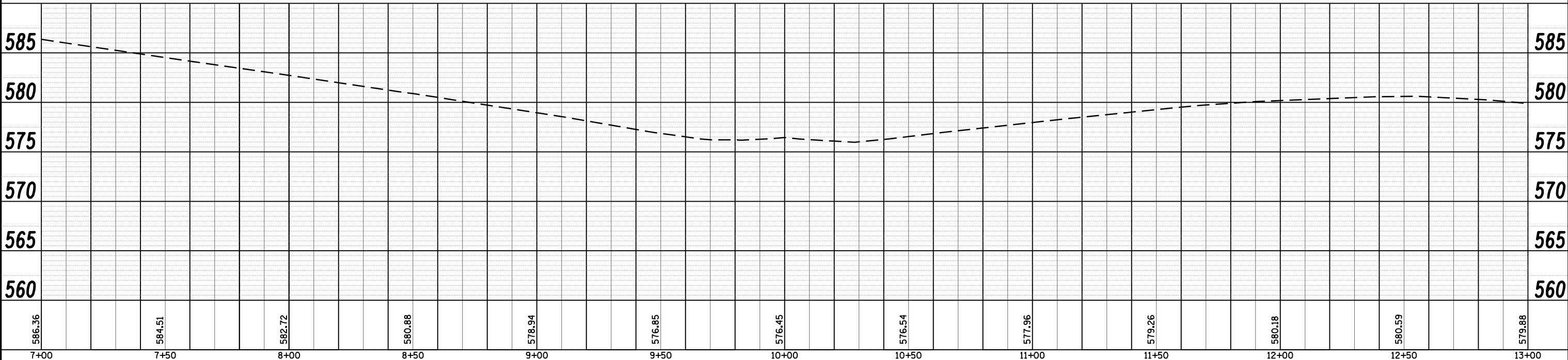
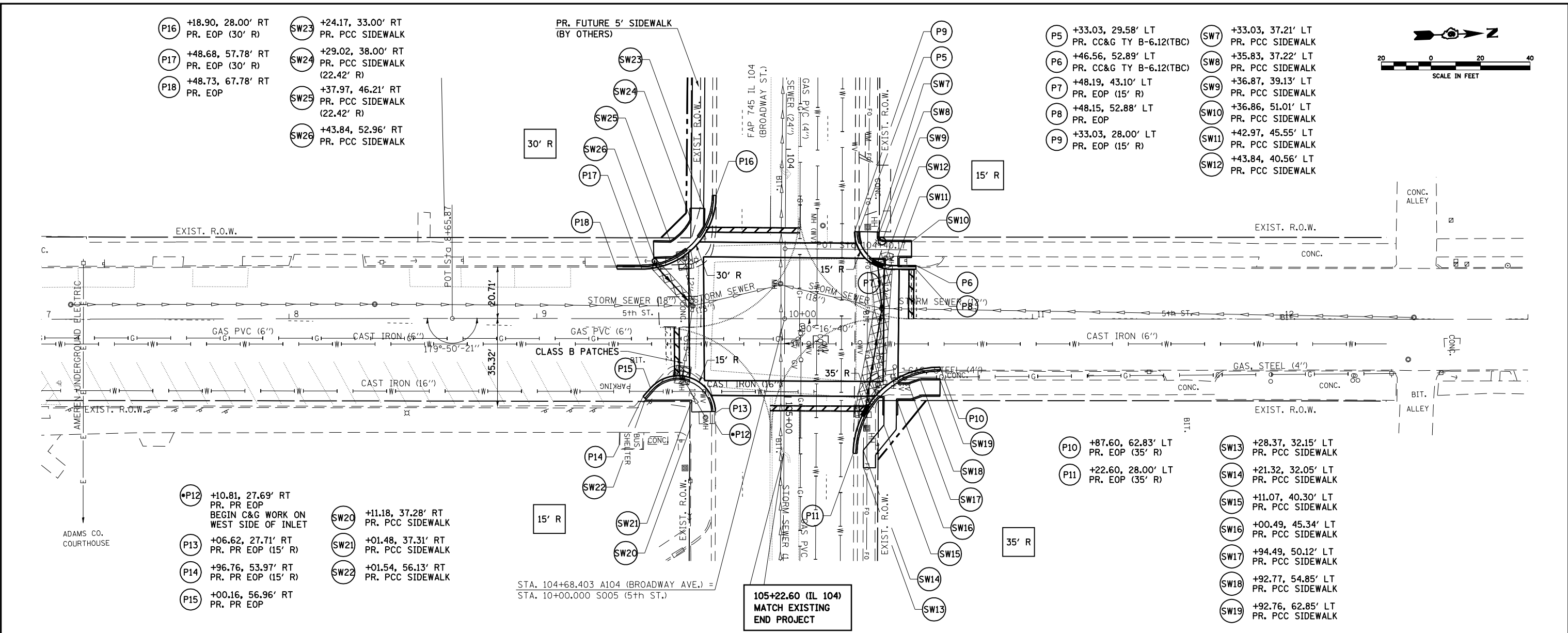
- P10 +87.60, 62.83' LT  
PR. EOP (35' R)
- P11 +22.60, 28.00' LT  
PR. EOP (35' R)

- SW13 +28.37, 32.15' LT  
PR. PCC SIDEWALK
- SW14 +21.32, 32.05' LT  
PR. PCC SIDEWALK
- SW15 +11.07, 40.30' LT  
PR. PCC SIDEWALK
- SW16 +00.49, 45.34' LT  
PR. PCC SIDEWALK
- SW17 +94.49, 50.12' LT  
PR. PCC SIDEWALK
- SW18 +92.77, 54.85' LT  
PR. PCC SIDEWALK
- SW19 +92.76, 62.85' LT  
PR. PCC SIDEWALK



PLAN	SURVEYED	BY	DATE
	NOTED		
	CHECKED		
	DATE		

PROFILE	SURVEYED	BY	DATE
	GRADES CHECKED		
	STRUCTURE NOTATIONS CHECKED		
	DATE		



FILE NAME =	USER NAME = laughlinr1	DESIGNED -	REVISED -	<b>STATE OF ILLINOIS DEPARTMENT OF TRANSPORTATION</b>	<b>PLAN &amp; PROFILE - 5TH ST.</b>				F.A.P. RTE. 745	SECTION	COUNTY Adams	TOTAL SHEETS 37	SHEET NO. 16
ct:\pwork\PWIDOT\LAUGHLINRL\dms24089\d62407-sh-t-plnprfa0051.dgn	PLOT SCALE = 40.00' / IN.	DRAWN -	REVISED -		SCALE:	SHEET NO.	OF SHEETS	STA.	TO STA.	CONTRACT NO. 72A96			
PLOT DATE = Jan-05-2009 09:47:40AM	DATE -	CHECKED -	REVISED -		FED. ROAD DIST. NO. ILLINOIS FED. AID PROJECT								
		DATE -	REVISED -		* D-6 INTERSECTION IMPROVEMENT								