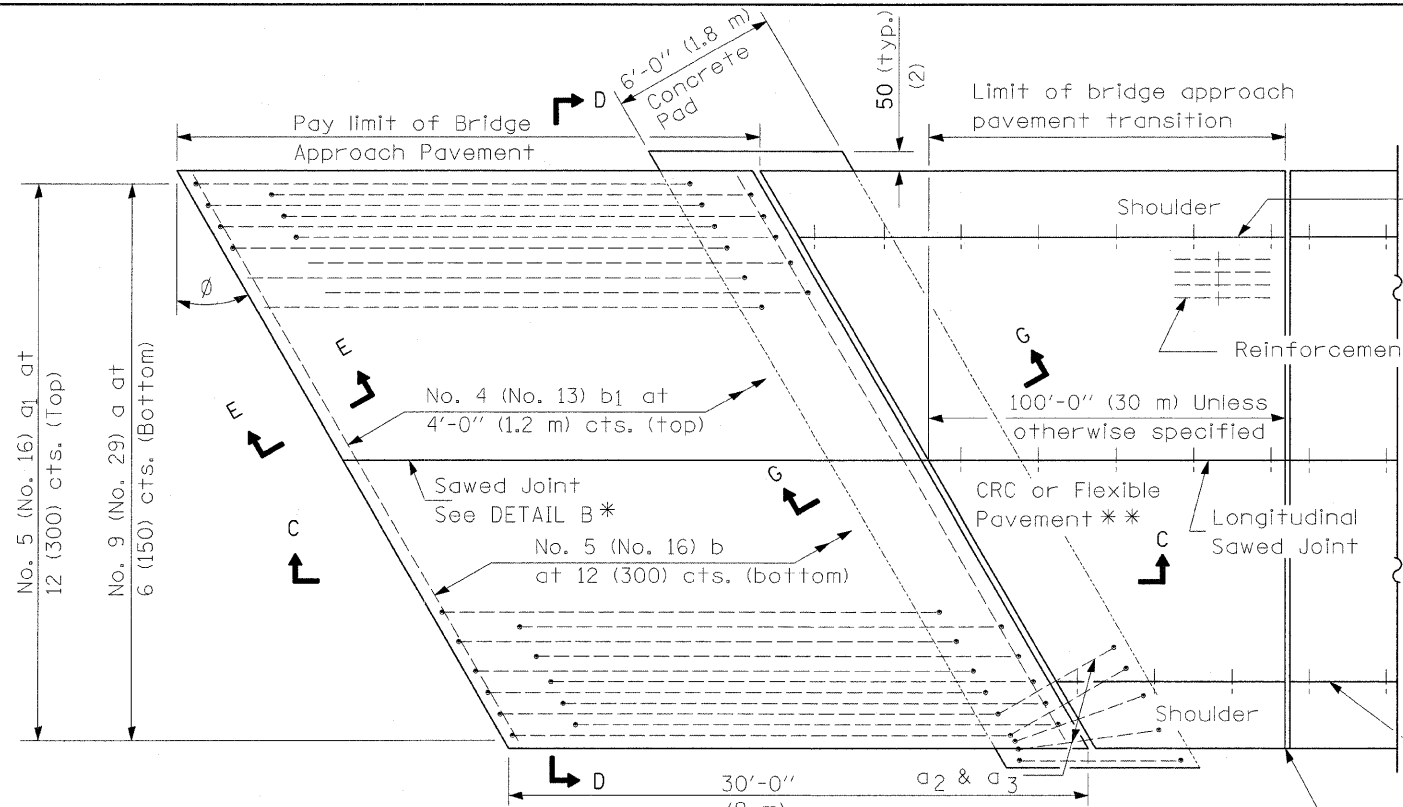
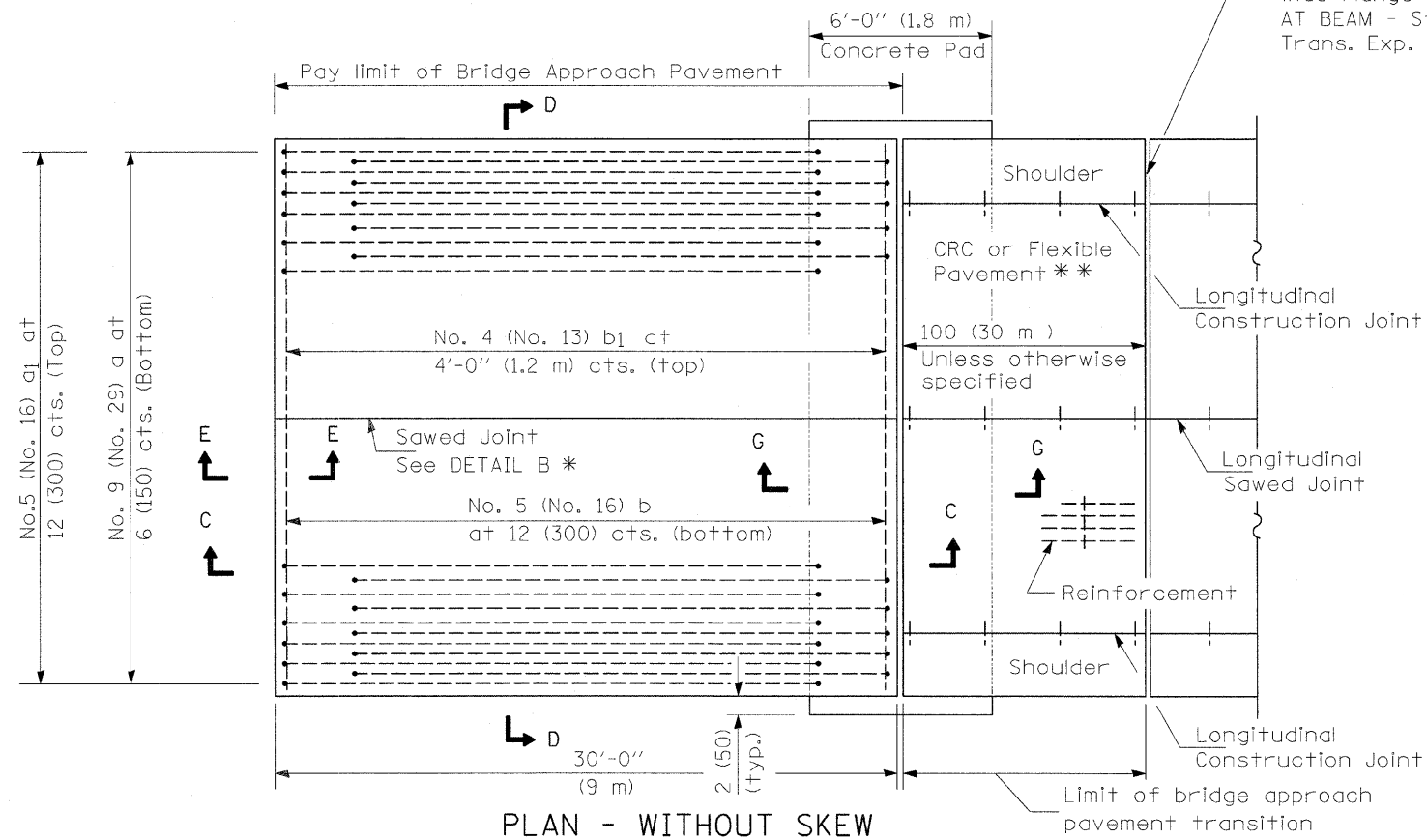


NEW CONSTRUCTION



PLAN - WITH SKEW



PLAN - WITHOUT SKEW

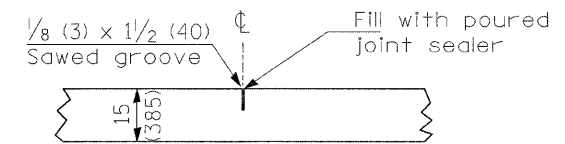
* Saw \perp or lane edge if poured two or more lane widths at a time.
 ** Omit Reinforcement, tie bars and Long. sawed Jt. for Flexible Pavement.

Longitudinal Construction Joint

Longitudinal Construction Joint

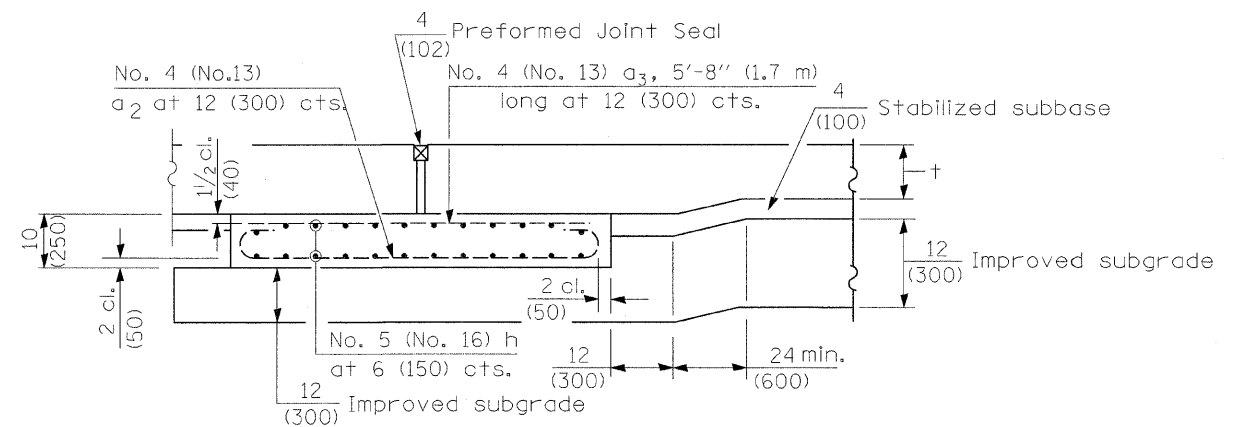
Rigid Pavement only:

Wide Flange Beam Terminal Joint (See DETAIL AT BEAM - Standard 421101 or 421106) or 2 (50) Trans. Exp. Joint as detailed on Standard 420001.



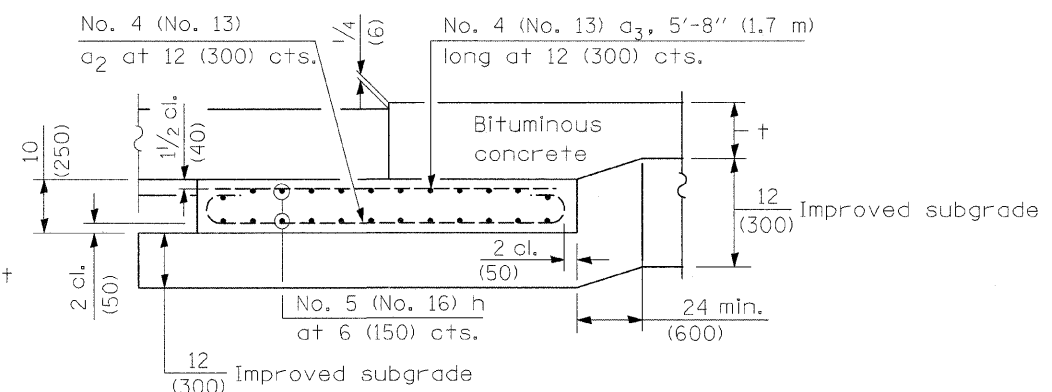
DETAIL B*

(Reinforcement Not Shown)



SECTION G-G - RIGID PAVEMENT

(Showing reinforcement)



SECTION G-G - FLEXIBLE PAVEMENT

(Showing reinforcement)

GENERAL NOTES

THICKNESS-"t"=Thickness of Pavement.
 See Standard 421001 for reinforcement details not shown.
 See Standard 420001 for joint details not shown.
 All dimensions are in inches (millimeters) unless otherwise shown.

FILE NAME =	USER NAME = staffennk	DESIGNED -	REVISED -	STATE OF ILLINOIS DEPARTMENT OF TRANSPORTATION	BRIDGE APPROACH PAVEMENT DETAILS			F.A.S. RTE.	SECTION	COUNTY	TOTAL SHEETS	SHEET NO.
cd:\pw\work\PW\IDOT\STEFFENMK\dms52451\st-detaiils-74145.dgn	PLOT SCALE = 50.0000' / IN.	DRAWN -	REVISED -					1536	125BR	MACON	45	11A
PLOT DATE = 10/20/2008	DATE -	CHECKED -	REVISED -					CONTRACT NO. 74145			FED. ROAD DIST. NO.	ILLINOIS FED. AID PROJECT
		DATE -	REVISED -					SCALE:	SHEET NO.	OF SHEETS	STA.	TO STA.