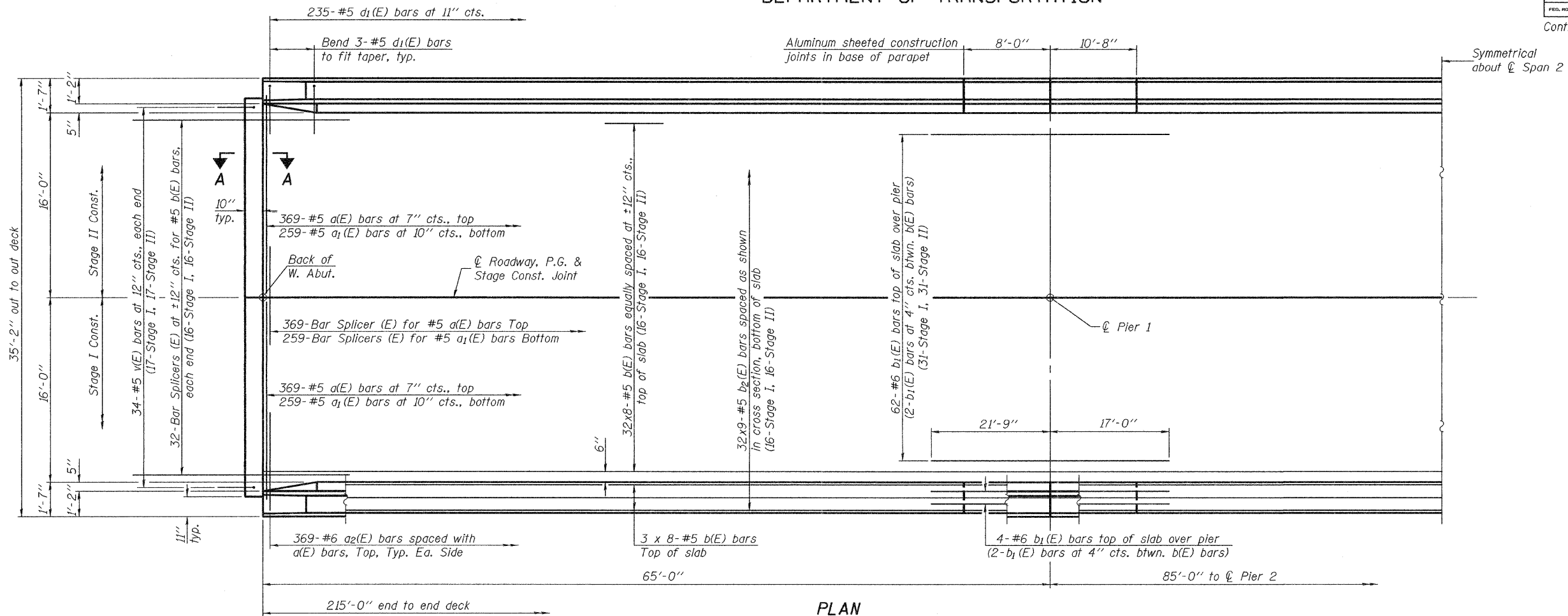


STATE OF ILLINOIS
DEPARTMENT OF TRANSPORTATION

ROUTE NO.	SECTION	COUNTY	TOTAL SHEETS	SHEET NO.	SHEET NO. 12 29 SHEETS
FAS 1536	125BR	Macon	45	24	
FED. ROAD DIST. NO. 7	ILLINOIS	FED. AID PROJECT			

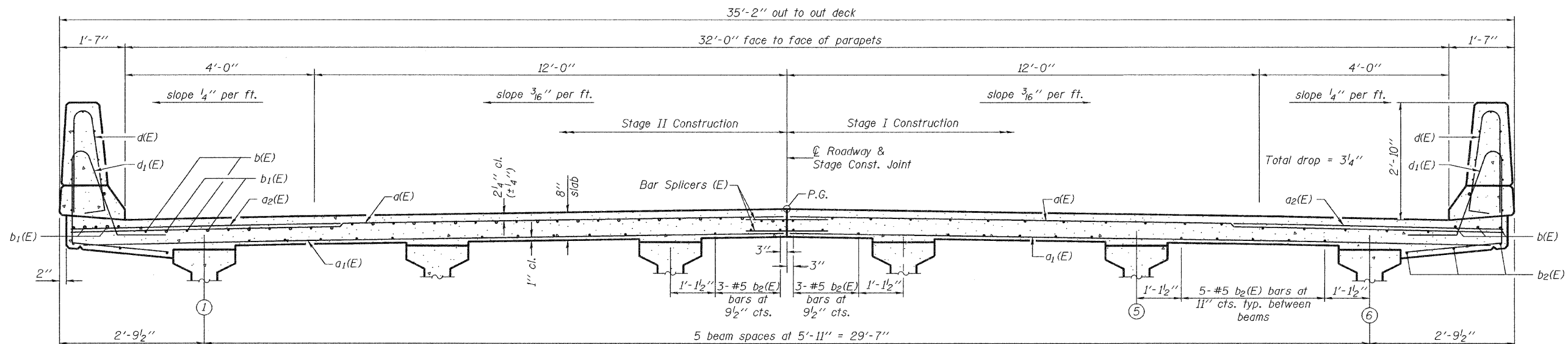
Contract #74145



PLAN

MIN. BAR LAP
#5 bar = 2'-2"

Notes:
See Sheet 13 of 29 for superstructure details and Bill of Material.
Bars indicated thus 20 x 3- #5 etc. indicates 20 lines of bars with 3 lengths per line.
See Sheet 13 of 29 for parapet reinforcement.
For Section A-A, see sheet 15 of 29.



CROSS SECTION
(Looking East)

DESIGNED	Ray Ahanchi
CHECKED	Nick Barnett
DRAWN	BECKY M. LEACH
CHECKED	GRA & NRB

November 14, 2008
EXAMINED *Thomas J. Domagalicki*
PASSED *Ralph E. Carls*
ENGINEER OF BRIDGES AND STRUCTURES

NEAR PIER

NEAR MIDSPAN

SUPERSTRUCTURE
F.A.S. ROUTE 1536 - SEC. 125BR
MACON COUNTY
STATION 616+26.50
STRUCTURE NO. 058-0132