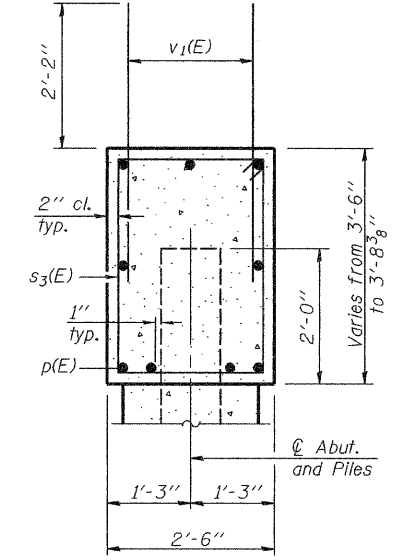
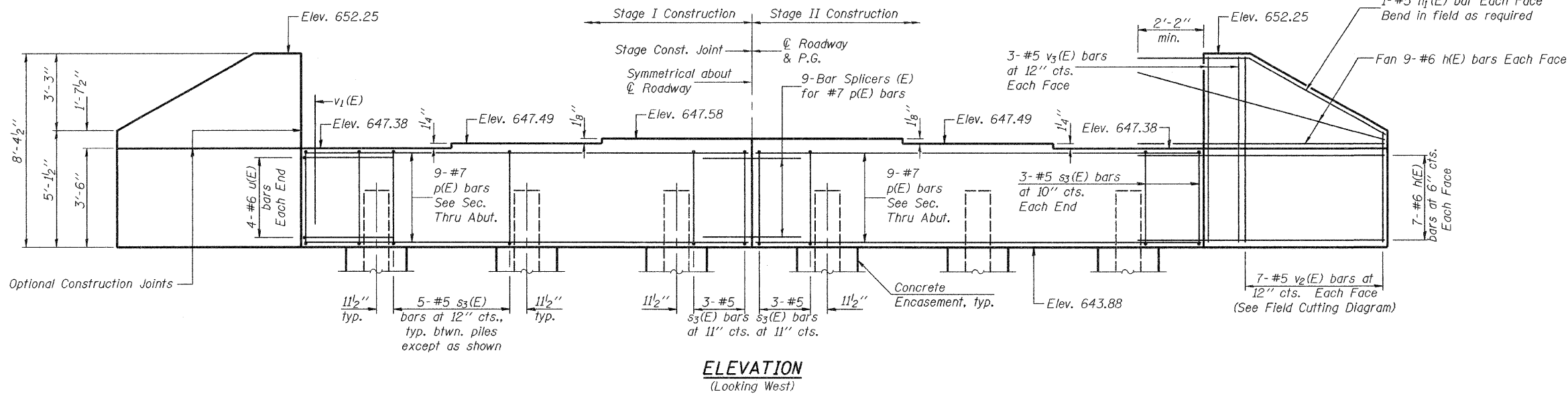


STATE OF ILLINOIS  
DEPARTMENT OF TRANSPORTATION

ROUTE NO.	SECTION	COUNTY	TOTAL SHEETS	SHEET NO.	SHEET NO. 21 29 SHEETS
FAS 1536	125BR	Macon	45	33	
FED. ROAD DIST. NO. 7	ILLINOIS	FED. AID PROJECT			

Contract #74145

Notes: Four steps monolithically with cap.



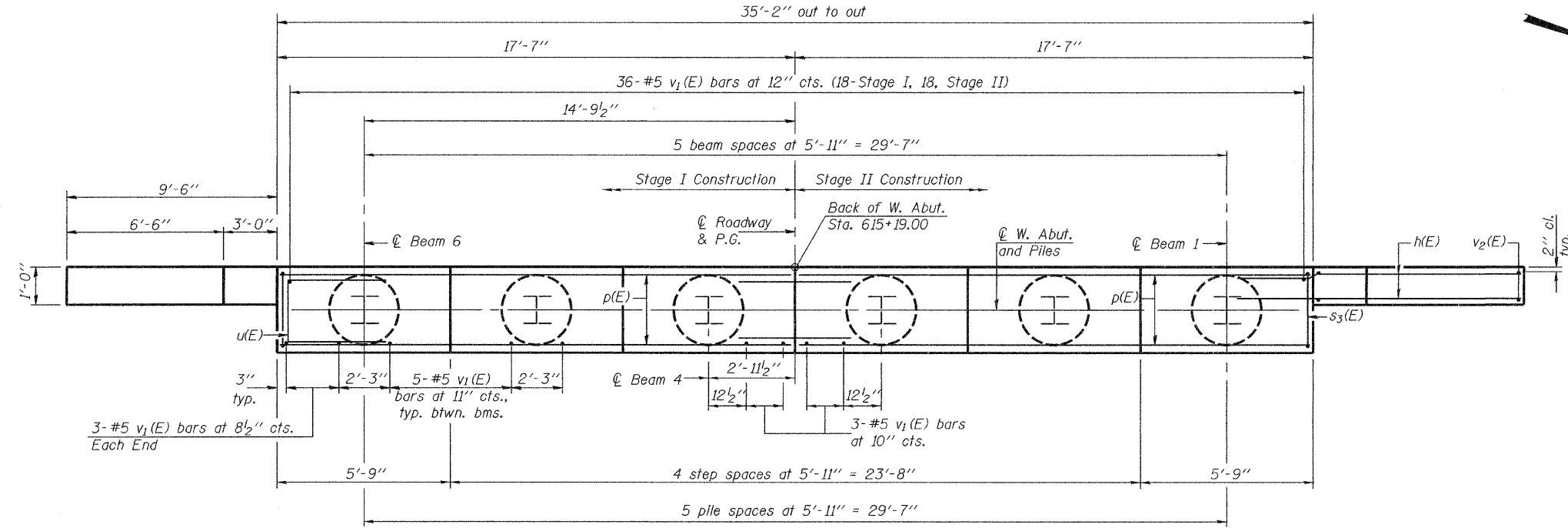
SEC. THRU ABUT.

BILL OF MATERIAL

Bar	No.	Size	Length	Shape
h(E)	64	#6	11'-8"	—
h1(E)	4	#5	12'-5"	—
p(E)	18	#7	17'-4"	—
s3(E)	32	#5	11'-7"	□
u(E)	8	#6	8'-1"	—
v1(E)	68	#5	4'-4"	—
v2(E)	14	#5	12'-11"	—
v3(E)	12	#5	8'-1"	—
Structure Excavation		Cu. Yd.	80	
Concrete Structures		Cu. Yd.	16.8	
Reinforcement Bars, Epoxy Coated		Pound	2890	
Furnishing Steel Piles, HP12x53		Foot	250	
Driving Piles		Foot	250	
Test Pile, HP12x53		Each	1	
Concrete Encasement		Cu. Yd.	2.1	

For details of Bar Splicers, see sheet 27 of 29.  
For details of piles and Concrete Encasement, see sheet 23 of 29.

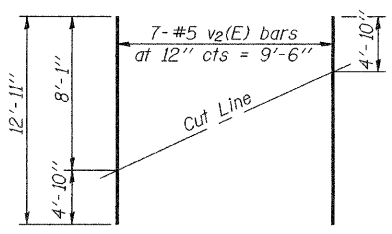
ELEVATION  
(Looking West)



PLAN

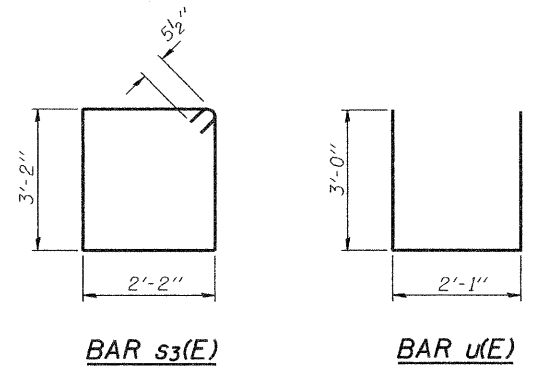
PILE DATA

Type: HP12x53  
Nominal Required Bearing: 334 kips  
Factored Resistance Available: 167 kips  
Est. Length: 50'  
No. Production Piles: 5  
No. Test Piles: 1



FIELD CUTTING DIAGRAM

Order v2(E) full length. Cut as shown and use remainder of bars in opposite face.



DESIGNED	Ray Ahanchi
CHECKED	Nick Barnett
DRAWN	DECKY M. LEACH
CHECKED	GRA & NRB

November 14, 2008  
EXAMINED *Thomas J. Demagala*  
PASSED *Ralph E. Anderson*

WEST ABUTMENT  
F.A.S. ROUTE 1536 - SEC. 125BR  
MACON COUNTY  
STATION 616+26.50  
STRUCTURE NO. 058-0132