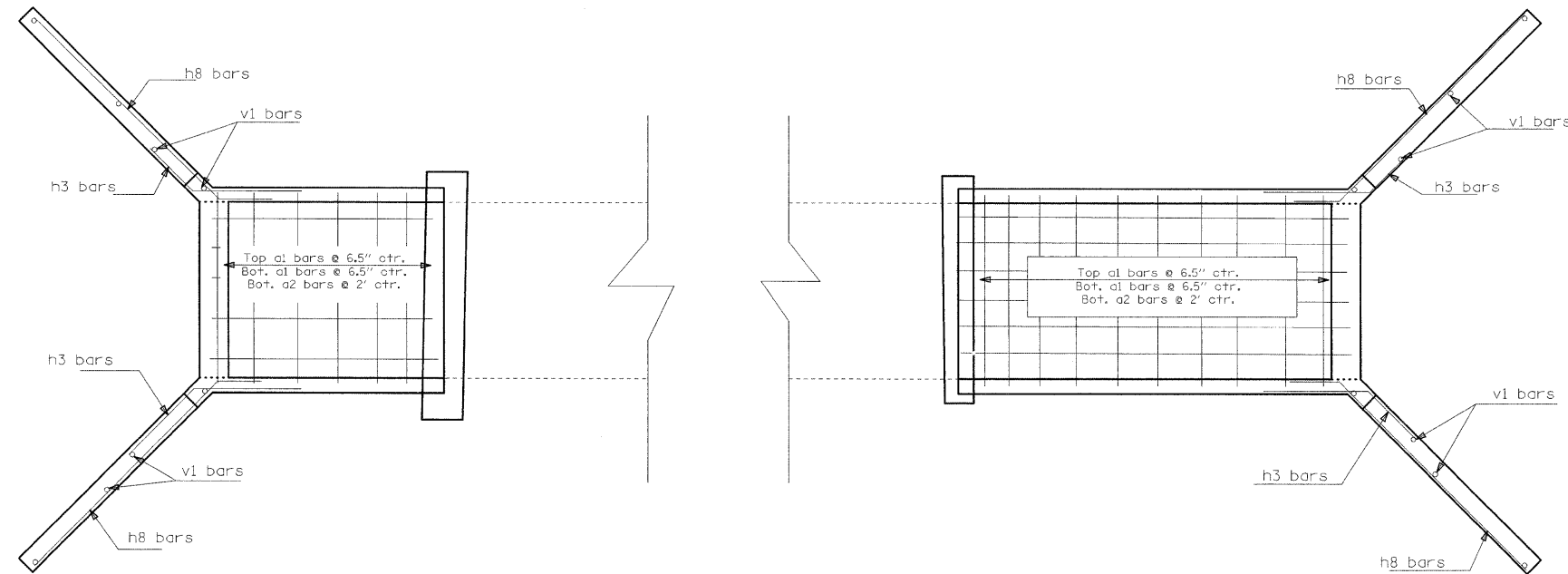
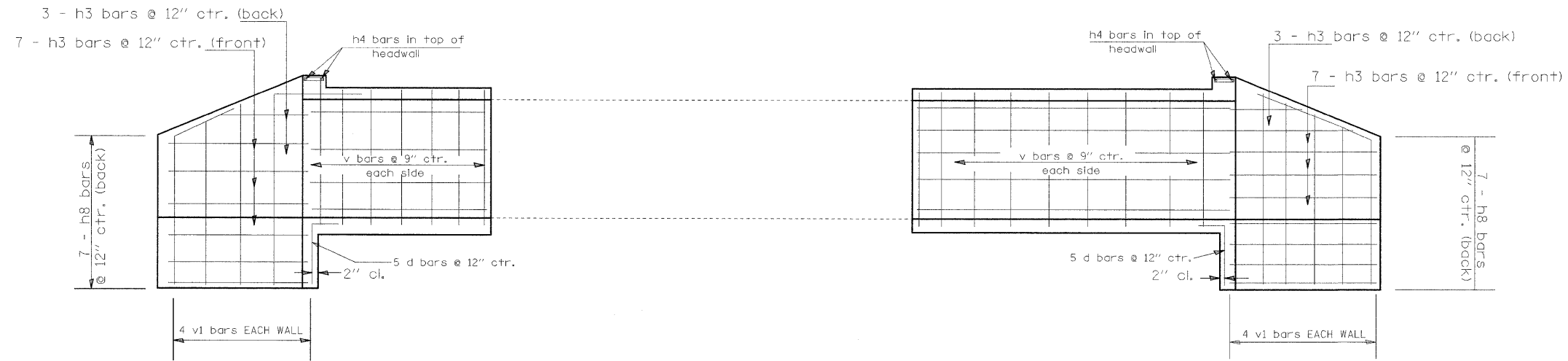


F.A.P. RTE.	SECTION	COUNTY	TOTAL SHEETS	SHEET NO.
809	(133,134)RS-4,135RS-5	ST. CLAIR, MONROE	252	115
STA. _____		TO STA. _____		
FED. ROAD DIST. NO. _____		ILLINOIS FED. AID PROJECT		



TOP VIEW

PLAN	SURVEYED	DATE
	DESIGNED	
	CHECKED	
	BY	
	DATE	
	NO. OF WAY CHECKED	
	DATE	
	FILE NAME	

REVISIONS	
NAME	DATE

ILLINOIS DEPARTMENT OF TRANSPORTATION
**CAST-IN-PLACE
 BOX CULVERT EXTENSIONS
 STA. 225+76.92**
 FAP ROUTE 809 (IL 158)
 SECTION (133, 134)RS-4, 135RS-5
 MONROE & ST. CLAIR COUNTY
 DRAWN BY: _____