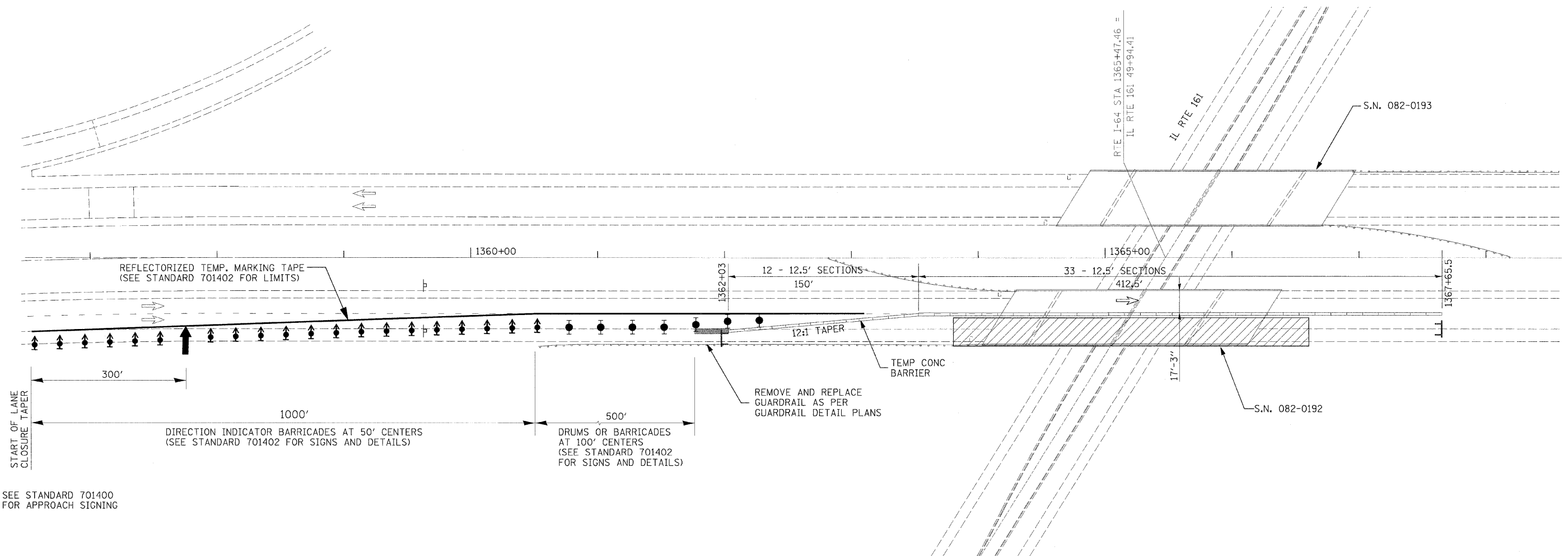
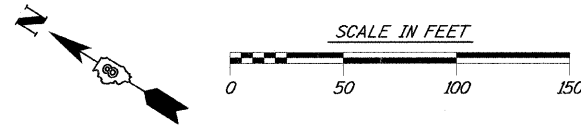


NOTES

- FOR WORK ON LEFT LANE, USE MIRROR IMAGE OF THIS SETUP.
- FOR WORK ON WESTBOUND LANES, USE MIRROR IMAGES OF THIS SETUP.
- SEE STANDARD DRAWING 701402 FOR SIGNING DETAILS, TEMPORARY PAVEMENT MARKING, AND DETAILS OF CHANNELIZING DEVICES.
- SEE STANDARD DRAWING 701411 FOR RAMP ACCESS WITHIN WORK AREA.



SEE STANDARD 701400 FOR APPROACH SIGNING

SYMBOLS

- WORK ZONE
- SIGN
- TYPE II BARRICADE OR DRUM
- DIRECTION INDICATOR BARRICADE WITH STEADY BURN MONODIRECTIONAL LIGHT
- TYPE II BARRICADE, DRUM OR VERTICAL BARRICADE W/ STEADY BURN MONODIRECTIONAL LIGHT
- CONE, DRUM OR BARRICADE
- DRUM WITH STEADY BURNING MONODIRECTIONAL LIGHT
- TYPE III BARRICADE
- TEMPORARY CONCRETE BARRIER
- IMPACT ATTENUATOR

I-64 OVER
ILLINOIS ROUTE 161
(S.N. 082-0192 EB)
(S.N. 082-0193 WB)

| | | | |
|-------------------------------------|-----------------------------|-----------------|-----------|
| FILE NAME = DB76855-ah1-staging.dgn | USER NAME = Steve | DESIGNED - SCF | REVISED - |
| | | DRAWN - SCF | REVISED - |
| | PLOT SCALE = 39.9999' / IN. | CHECKED - TJQ | REVISED - |
| | PLOT DATE = 1/29/2009 | DATE - 12/12/08 | REVISED - |

**STATE OF ILLINOIS
DEPARTMENT OF TRANSPORTATION**

TRAFFIC CONTROL PLAN

SCALE: 1" = 50' SHEET NO. 5 OF 9 SHEETS STA. TO STA.

| F.A.I. RTE. | SECTION | COUNTY | TOTAL SHEETS | SHEET NO. |
|---|-----------------|-------------------|--------------------|-----------|
| 64 | 82-(8,9,10)RS-3 | ST. CLAIR-CLINTON | 78 | 44 |
| FED. ROAD DIST. NO. ILLINOIS FED. AID PROJECT | | | CONTRACT NO. 76855 | |

PLOT DRIVER = C:\Program Files\Bentley\MapKaspace\System\Plot\Driver\Inter-Plot.PLT
 PEN TABLE = C:\Program Files\Bentley\MapKaspace\System\PenTable\aspen.tbl