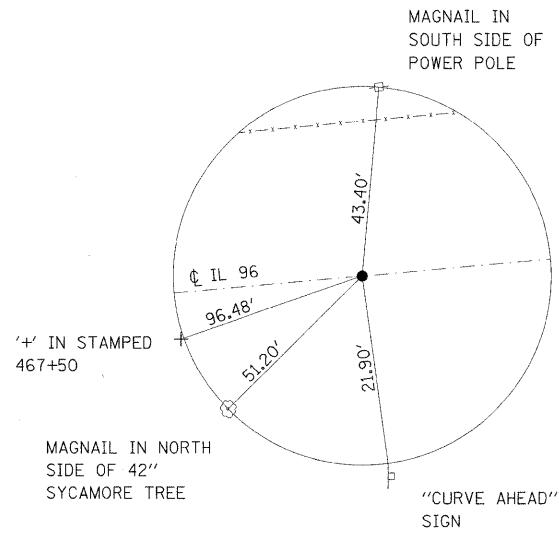


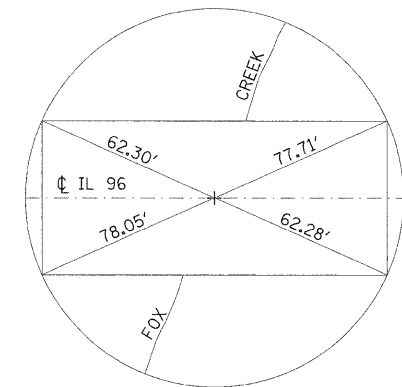
**TIE POINT**

MAGNAIL  
P.C. STA 473+49.27



**TIE POINT**

MAGNAIL  
STA 468+50



ALL TIES ARE TO THE INSIDE CORNER OF BRIDGE CURBS.  
CENTER OF BRIDGE "x" IS 0.45' NORTH OF EXISTING/FOUND "x".

**TIE POINT**

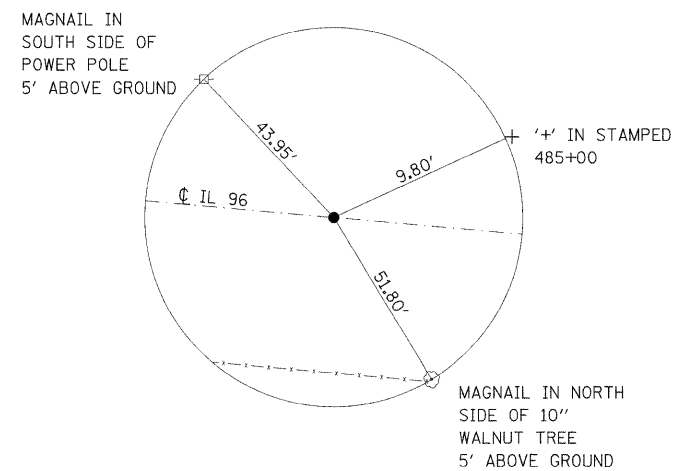
CENTER OF BRIDGE  
CUT "x" IN CONCRETE PAVEMENT  
STA 475+15.5

**BENCHMARKS**

BM 400 - RR SPIKE IN NORTH SIDE OF POWER POLE ON SOUTH SIDE IL 96, APPROX. 0.3 MILES EAST OF INTERSECTION OF IL 96 AND RIVER ROAD TO HAMBURG NEAR SOUTHEAST END OF MOZIER.  
ELEV = 466.731

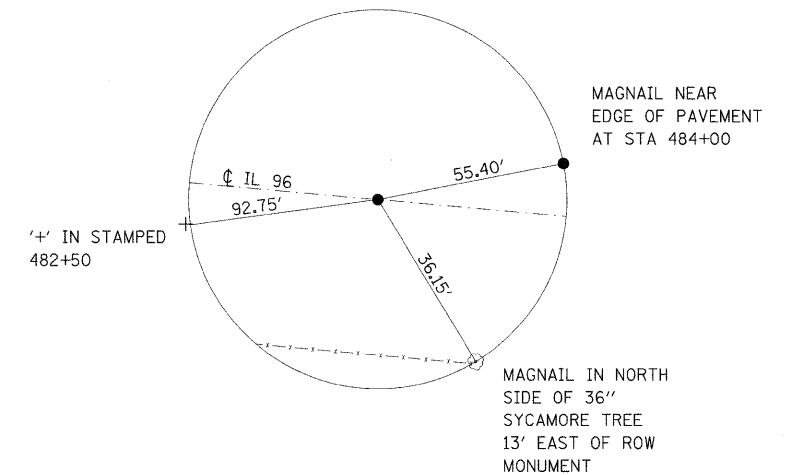
BM 401 - CHISELED SQUARE IN CENTER OF CONCRETE HEADWALL ON SOUTH SIDE OF IL 96, APPROX. 0.3 MILES WEST OF BRIDGE SN 007-0013 OVER FOX CREEK  
ELEV = 490.829

BM 402 - CHISELED SQUARE ON TOP OF NE WINGWALL ON NORTH SIDE OF IL 96 AT BRIDGE SN 007-0013 OVER FOX CREEK.  
STA. 475+50  
OFFSET = 17' LT  
ELEV = 512.992



**TIE POINT**

MAGNAIL  
STA 485+00



**TIE POINT**

MAGNAIL  
STA 483+45.88

FILE NAME =	USER NAME = #USER#	DESIGNED -	REVISED -	<b>STATE OF ILLINOIS DEPARTMENT OF TRANSPORTATION</b>	<b>TIE POINTS AND BENCHMARKS</b>				F.A.P. RTE.	SECTION	COUNTY	TOTAL SHEETS	SHEET NO.
#FILE#	PLOT SCALE = #SCALE#	DRAWN -	REVISED -						304	5A-BR	CALHOUN	60	8
	PLOT DATE = #DATE#	CHECKED -	REVISED -		SCALE: SHEET NO. OF SHEETS STA. TO STA.				CONTRACT NO. 76886				
		DATE -	REVISED -		FED. ROAD DIST. NO. ILLINOIS FED. AID PROJECT								