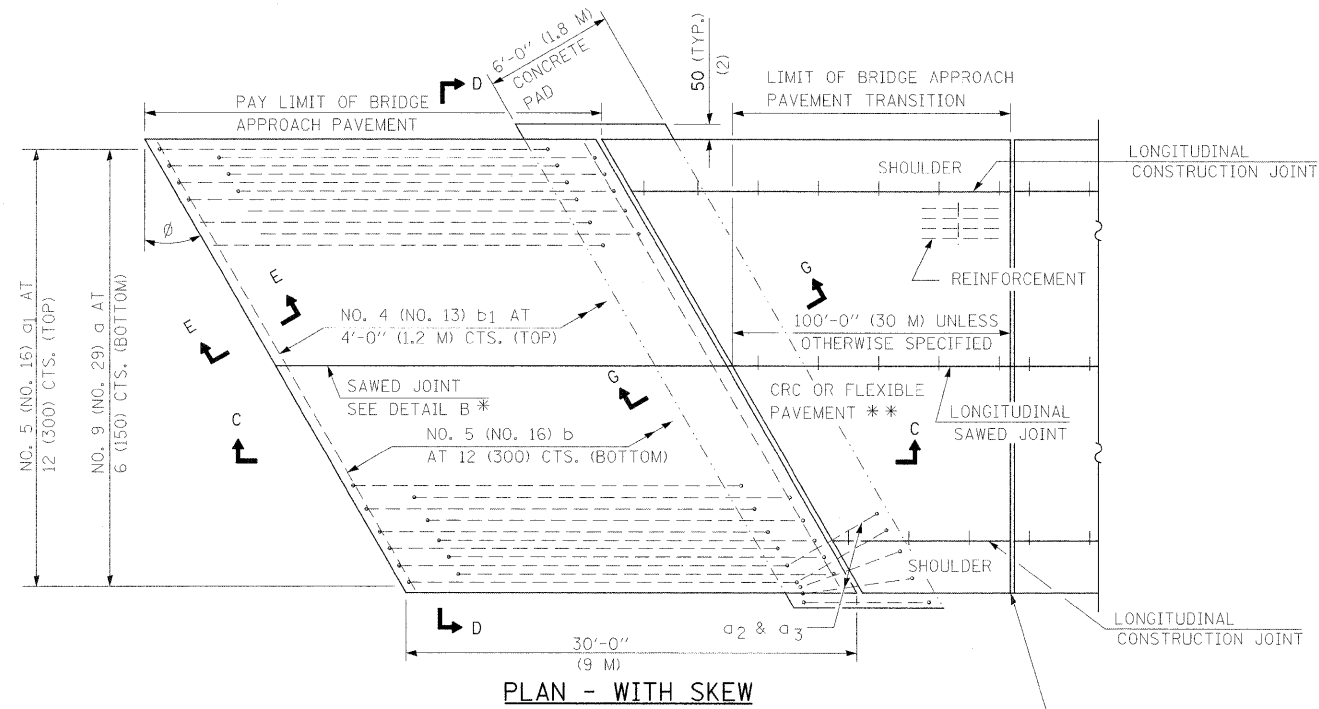
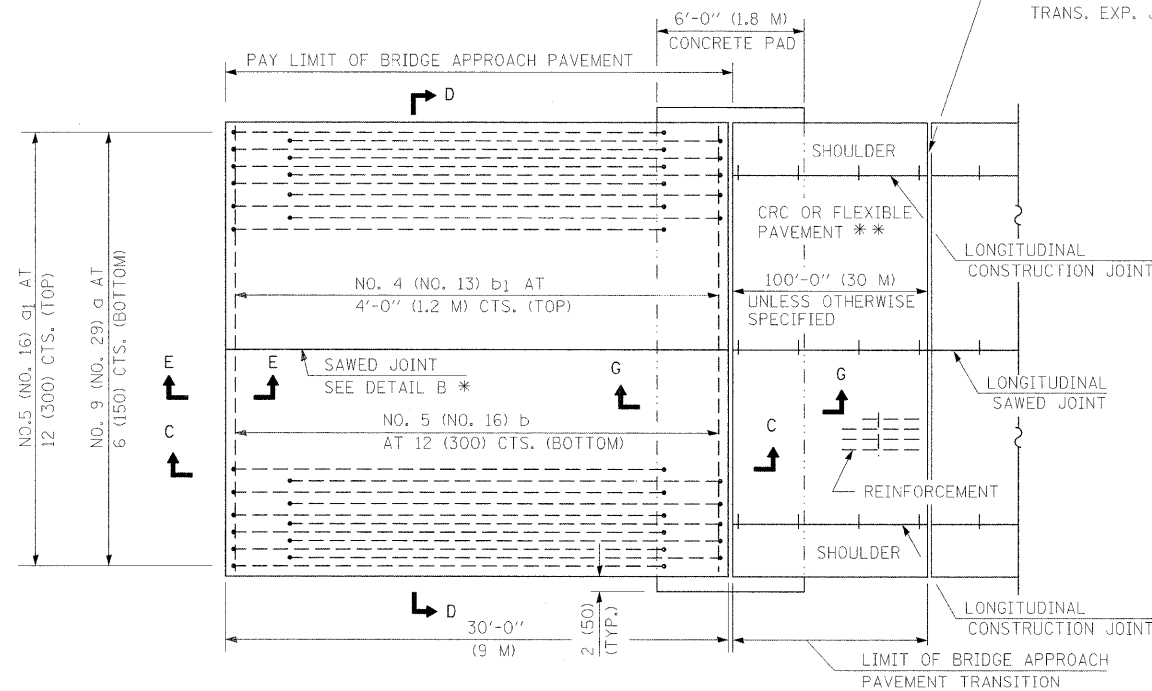


NEW CONSTRUCTION

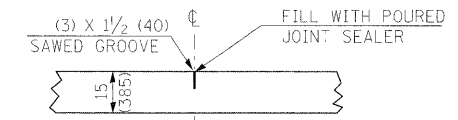


PLAN - WITH SKEW

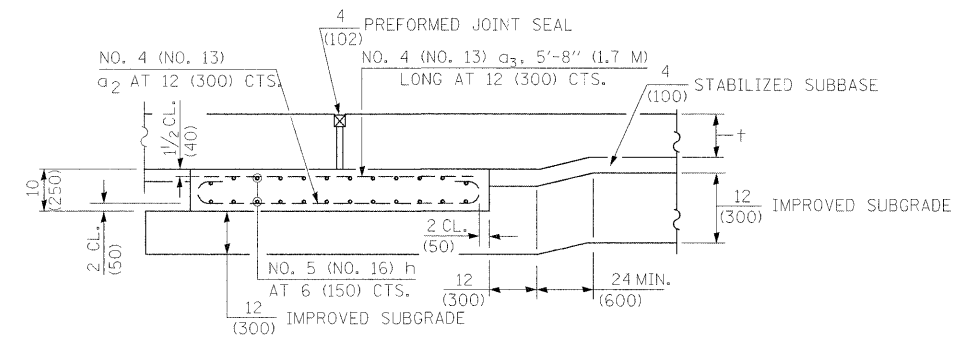


PLAN - WITHOUT SKEW

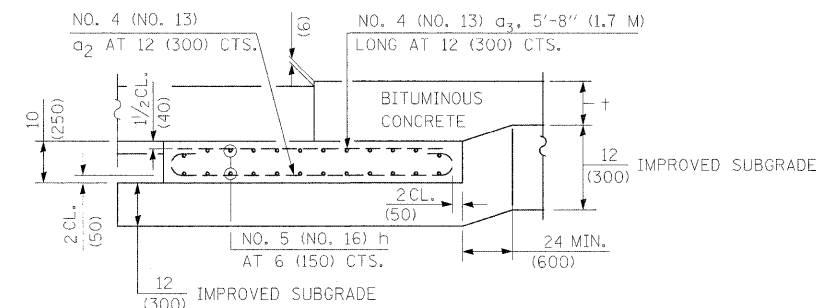
RIGID PAVEMENT ONLY:  
 WIDE FLANGE BEAM TERMINAL JOINT (SEE DETAIL AT BEAM - STANDARD 421101 OR 421106) OR 2 (50) TRANS. EXP. JOINT AS DETAILED ON STANDARD 420001.



DETAIL B\*  
 (REINFORCEMENT NOT SHOWN)



SECTION G-G - RIGID PAVEMENT  
 (SHOWING REINFORCEMENT)



SECTION G-G - FLEXIBLE PAVEMENT  
 (SHOWING REINFORCEMENT)

GENERAL NOTES

- THICKNESS-"t"=THICKNESS OF PAVEMENT.
- SEE STANDARD 421001 FOR REINFORCEMENT DETAILS NOT SHOWN.
- SEE STANDARD 420001 FOR JOINT DETAILS NOT SHOWN.
- ALL DIMENSIONS ARE IN INCHES (MILLIMETERS) UNLESS OTHERWISE SHOWN.

FILE NAME = #FILE#	USER NAME = #USER#	DESIGNED -	REVISED -	<b>STATE OF ILLINOIS DEPARTMENT OF TRANSPORTATION</b>	<b>BRIDGE APPROACH PAVEMENT DETAIL</b>	F.A.P. RTE. 304	SECTION 5A-BR	COUNTY CALHOUN	TOTAL SHEETS 60	SHEET NO. 18	
	PLOT SCALE = #SCALE#	DRAWN -	REVISED -			SCALE:	SHEET NO. 1 OF 4 SHEETS	STA.	TO STA.	FED. ROAD DIST. NO.	ILLINOIS FED. AID PROJECT
	PLOT DATE = #DATE#	CHECKED -	REVISED -								
		DATE -	REVISED -								CONTRACT NO. 76886