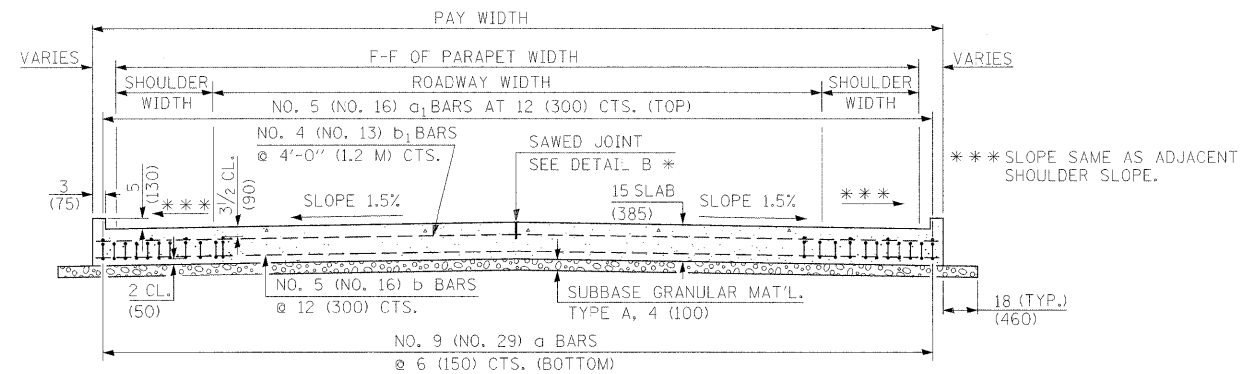


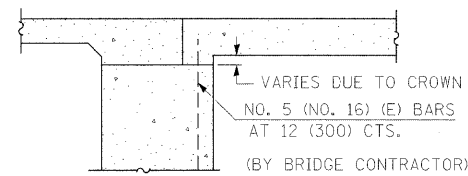
SECTION C-C

① STAGGER NO. 9 (NO. 29) A BARS AS SHOWN ON PLAN - FULL WIDTH



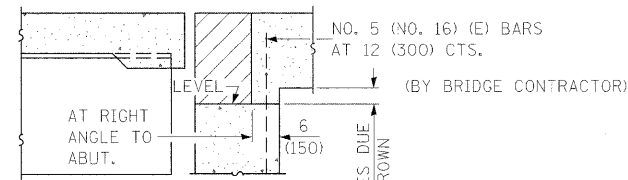
SECTION D-D

(SEE PLAN FOR DIMENSIONS NOT SHOWN)



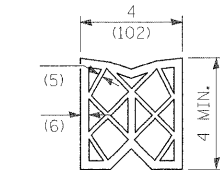
SECTION E-E

(INTEGRAL ABUTMENTS)

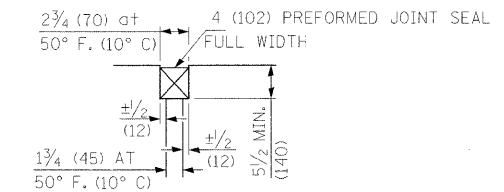


SECTION E-E

(JOINTED ABUTMENTS)

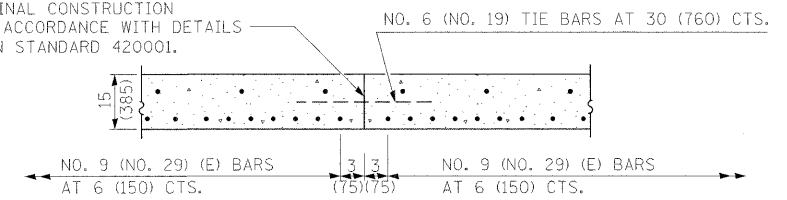


PREFORMED JOINT SEAL



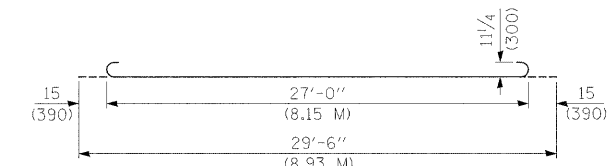
DETAIL A

LONGITUDINAL CONSTRUCTION JOINT IN ACCORDANCE WITH DETAILS SHOWN ON STANDARD 420001.

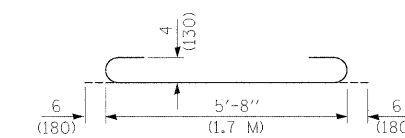


OPTIONAL LONGITUDINAL CONSTRUCTION JOINT

AS APPROVED BY THE ENGINEER, THE CONTRACTOR MAY ELECT TO REDUCE THE WIDTHS OF POUR BY USE OF THE OPTIONAL LONGITUDINAL CONSTRUCTION JOINT SHOWN. JOINTS SHALL BE LOCATED AT THE EDGE OF A TRAFFIC LANE.



BAR a



BAR a2

DESIGN STRESSES

$f_y = 60,000$ P.S.I. (400 MPA)
 $f'_c = 3,500$ P.S.I. (24 MPA)
 $n = 8.5$

GENERAL NOTES

- THICKNESS-"+"=THICKNESS OF PAVEMENT.
- SEE STANDARD 421001 FOR REINFORCEMENT DETAILS NOT SHOWN.
- SEE STANDARD 420001 FOR JOINT DETAILS NOT SHOWN.
- ALL DIMENSIONS ARE IN INCHES (MILLIMETERS) UNLESS OTHERWISE SHOWN.

FILE NAME =	USER NAME = #USER#	DESIGNED -	REVISED -	STATE OF ILLINOIS DEPARTMENT OF TRANSPORTATION	BRIDGE APPROACH PAVEMENT DETAIL	F.A.P. RTE.	SECTION	COUNTY	TOTAL SHEETS	SHEET NO.	
#FILE#		DRAWN -	REVISED -			304	5A-BR	CALHOUN	60	20	
	PLOT SCALE = #SCALE#	CHECKED -	REVISED -			CONTRACT NO. 76886					
	PLOT DATE = #DATE#	DATE -	REVISED -			SCALE:	SHEET NO. 3 OF 4 SHEETS	STA.	TO STA.	FED. ROAD DIST. NO.	ILLINOIS FED. AID PROJECT