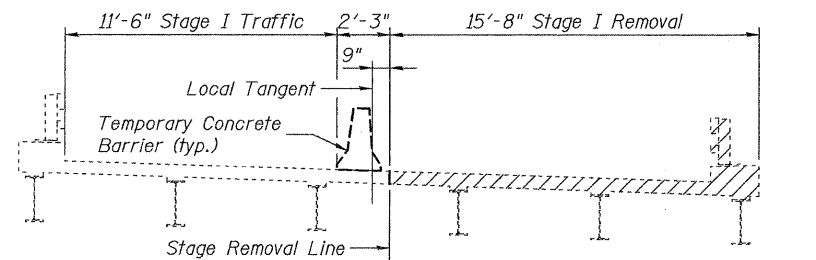
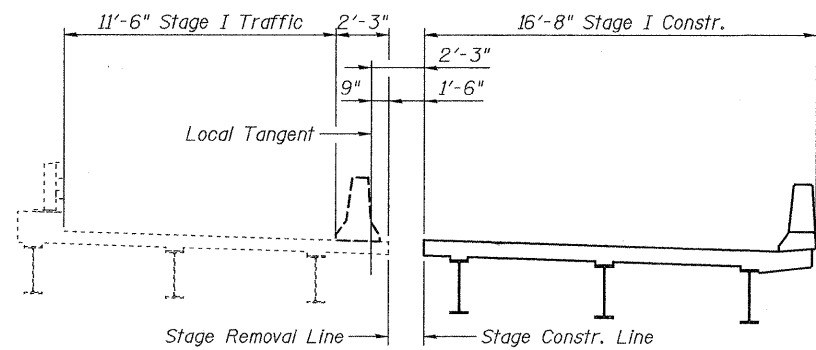


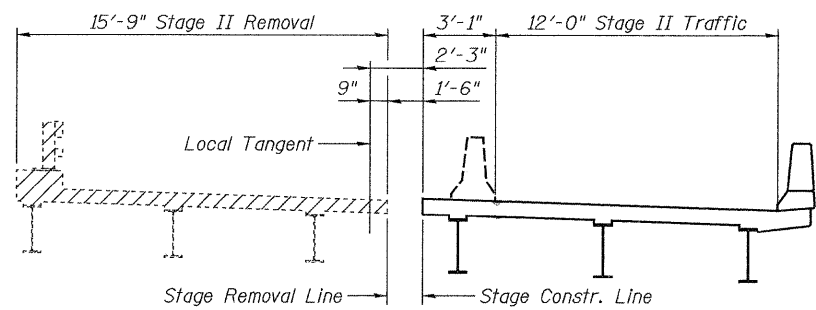
STATE OF ILLINOIS  
DEPARTMENT OF TRANSPORTATION



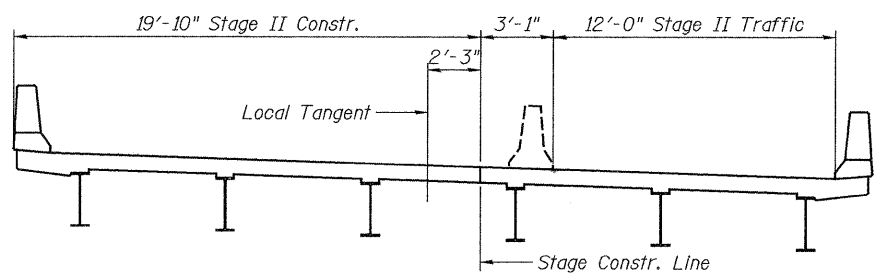
**STAGE I REMOVAL**  
(Looking East)



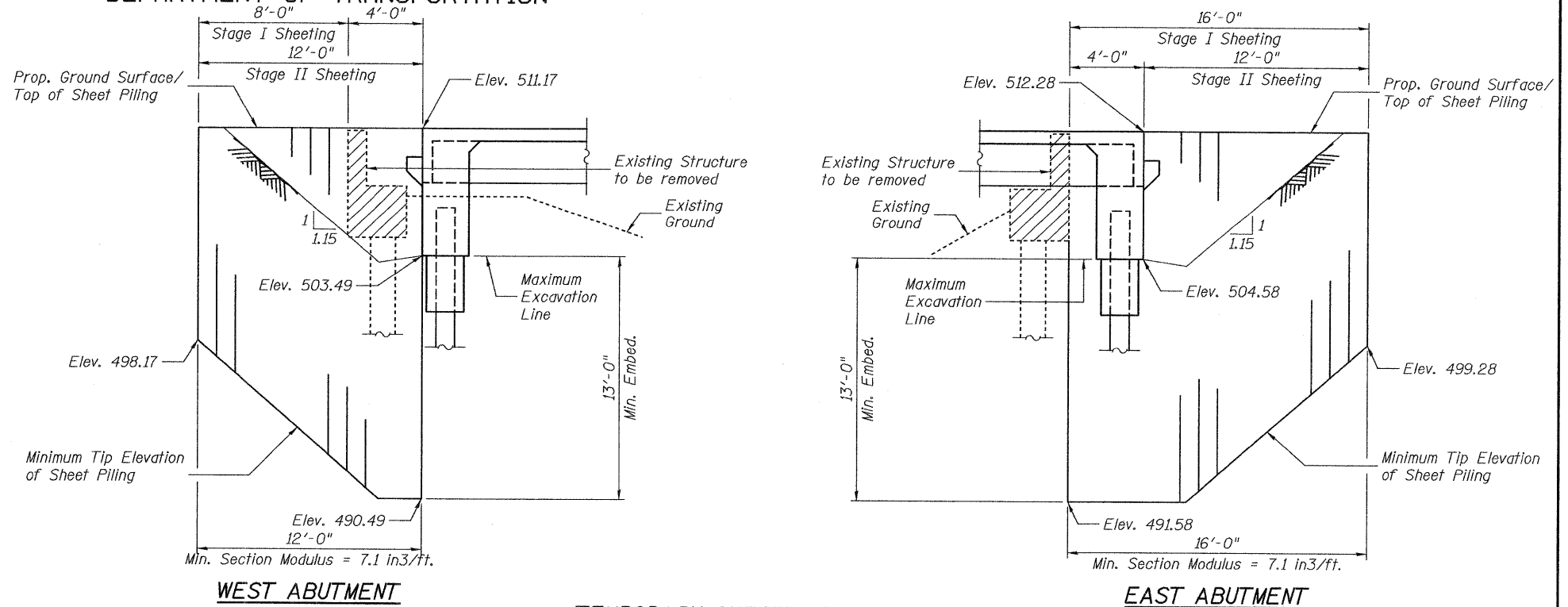
**STAGE I CONSTRUCTION**  
(Looking East)



**STAGE II REMOVAL**  
(Looking East)



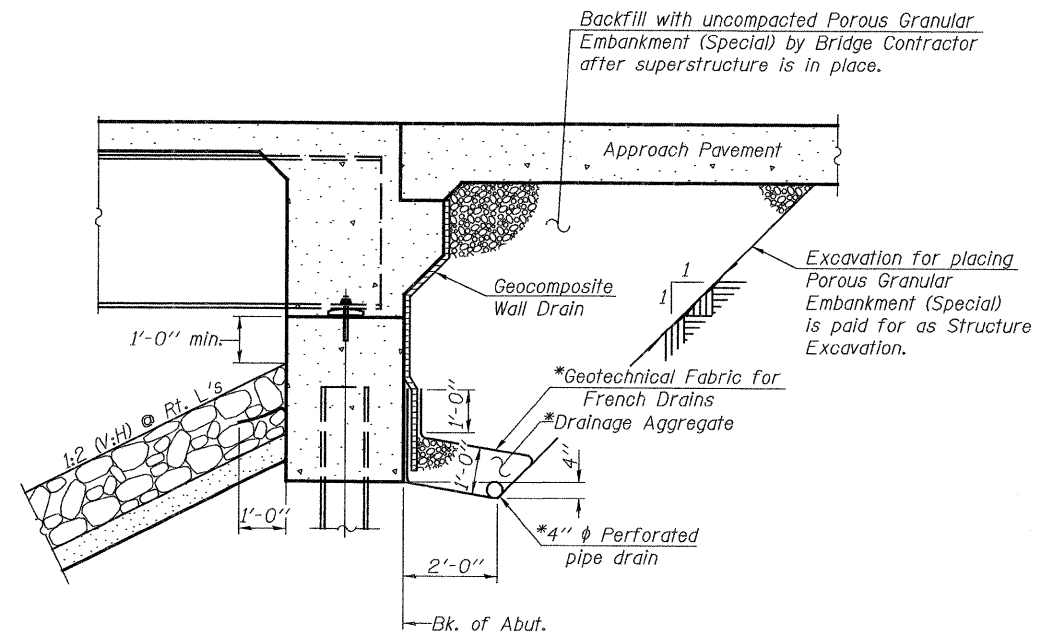
**STAGE II CONSTRUCTION**  
(Looking East)



**TEMPORARY SHEET PILING DETAILS**

(Slopes and horizontal dimensions are measured parallel to  $\perp$  roadway)

If the Contractor chooses to alter the temporary cantilevered sheet piling design requirements shown on plans, a design submittal including plan details and calculations will be required for review and acceptance by the Engineer.



**SECTION THRU INTEGRAL ABUTMENT**

(Horiz. dim.  $\odot$  Rt. L's)

\*Included in the cost of Pipe Underdrains for Structures.

Note:  
All drainage system components shall extend to 2'-0" from the end of each wingwall except an outlet pipe shall extend until intersecting with the side slopes. The pipes shall drain into concrete headwalls. (See Article 601.05 of the Standard Specifications and Highway Standard 601101).

**STAGE CONSTRUCTION DETAILS**

ILLINOIS 96 OVER  
FOX CREEK  
STRUCTURE NO. 007-0028

SHEET 2 OF 22	F.A.P. RTE.	SECTION	COUNTY	TOTAL SHEETS	SHEET NO.
	304	5A-BR	CALHOUN	60	25
STA. 475+19.62			CONTRACT NO. 76886		
FED. ROAD DIST. NO. ILLINOIS FED. AID PROJECT					

NOTES:  
Hatched area indicates Removal of Existing Structures.  
Removal of existing railing is included with Removal of Existing Structures.  
For quantity and location of Temporary Concrete Barrier, see Roadway Plans.

**JD** Johnson, Depp & Quisenberry  
CONSULTING ENGINEERS  
Springfield, Illinois

DESIGNED: JDQ	DRAWN: SJS
CHECKED: DCD	CHECKED: DCD

DATE: 11/26/2008 10:40:22 USER: DCD FILE: J:\JDQ\10164\_IL\_96\_Fox\_Creek\_FINAL\FoxCreekV02stageconstr.dgn